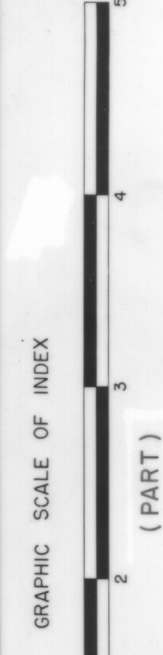


2	3	4
5	6	7
8	9	10



(PART)
MARSHALL COUNTY, MINNESOTA

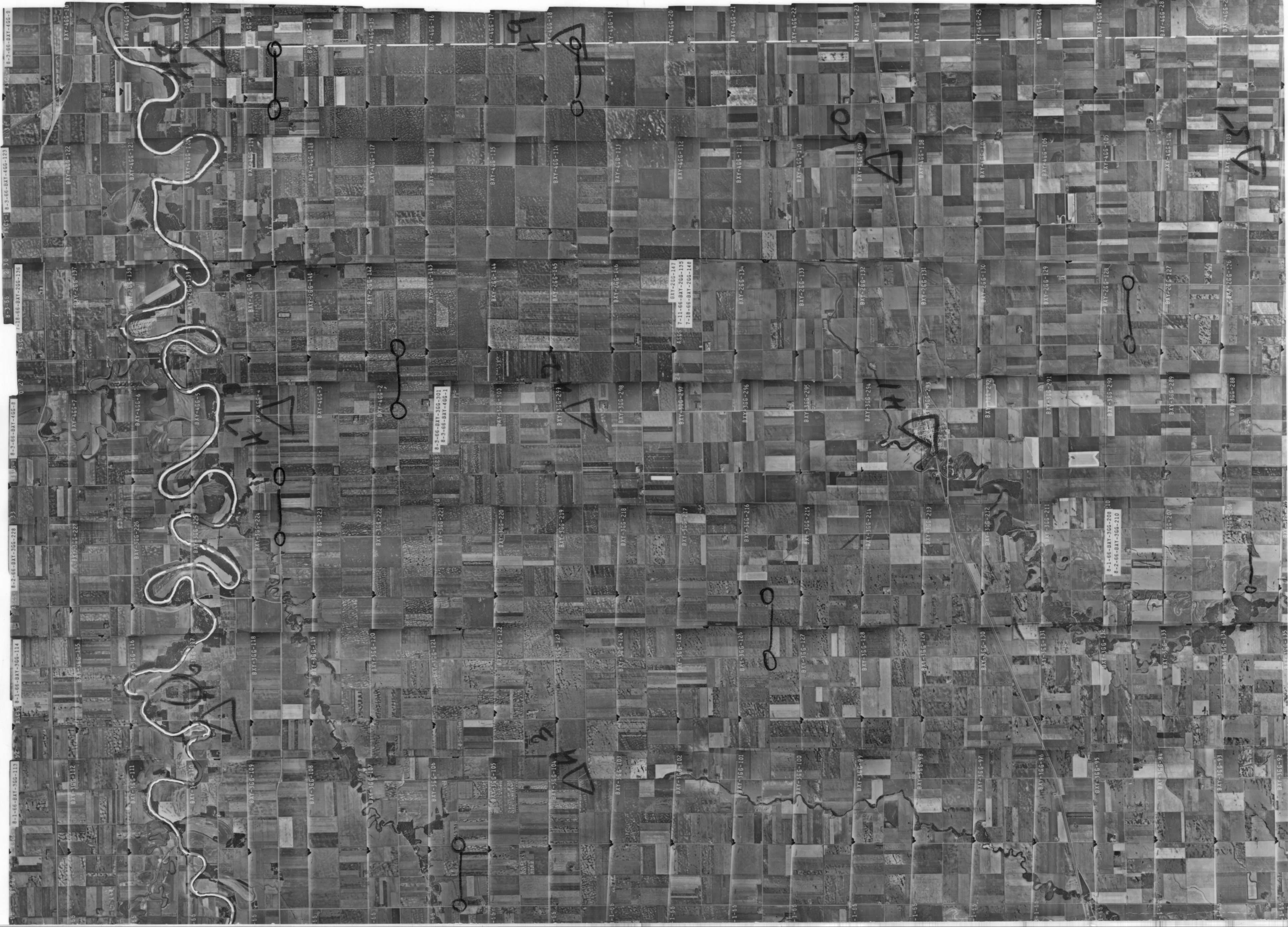
U.S. DEPARTMENT OF AGRICULTURE
AGRICULTURAL STABILIZATION AND CONSERVATION SERVICE

INVENTORY NO. ASCS-6-66 DC ITEM 1
FLOWN BY PARK AERIAL SURVEYS, INC., LOUISVILLE, KY.
YEAR FLOWN 1966 AERIAL NEGATIVE SCALE 1:20,000

NO PHOTOS AS OF 8-75

SYMBOL BXY SHEET 1 OF 8

19664



↑ strip here ↑