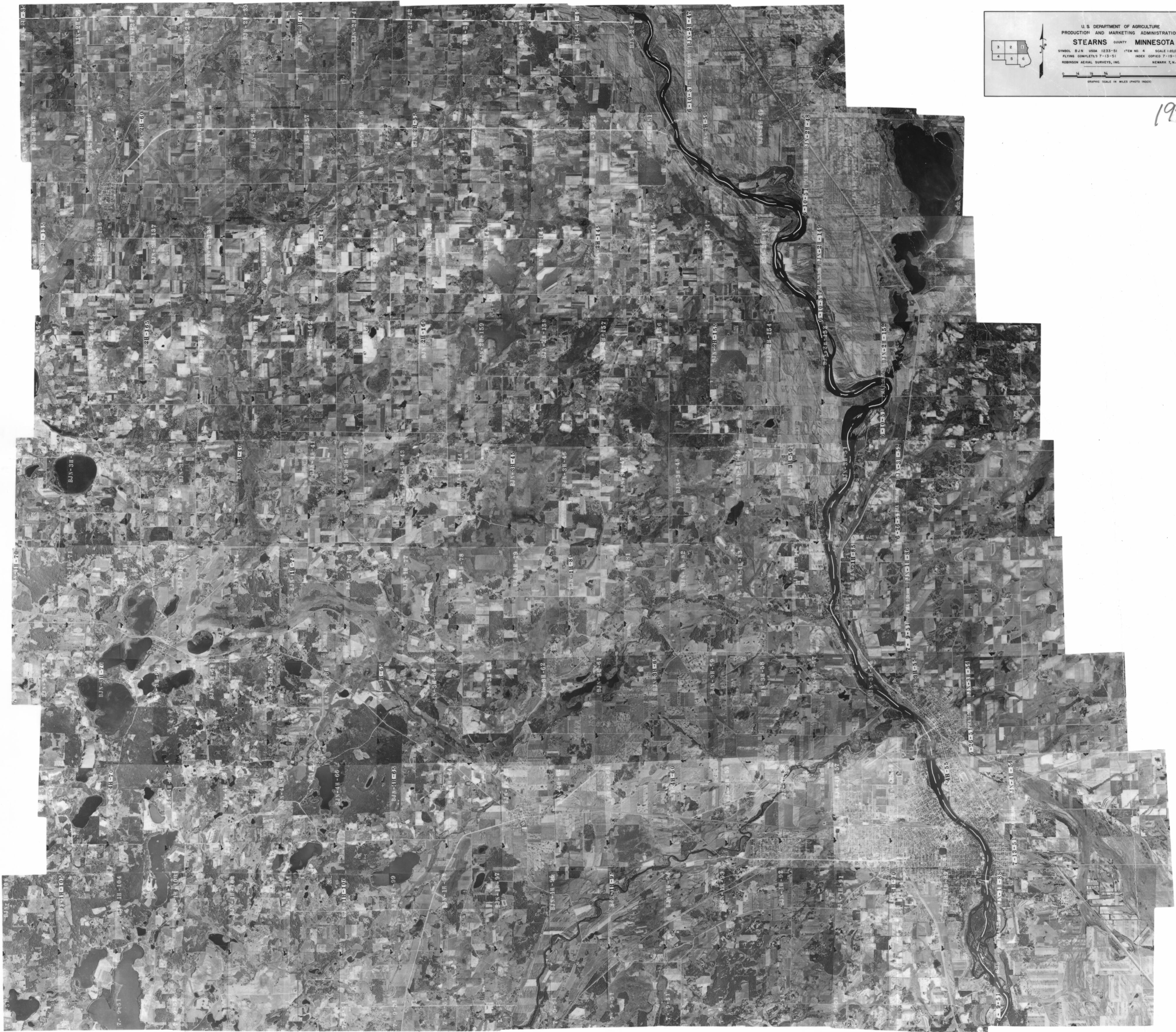


U.S. DEPARTMENT OF AGRICULTURE  
 PRODUCTION AND MARKETING ADMINISTRATION  
**STEARNS COUNTY MINNESOTA**  
 SYMBOL: B & W USA 1233-51 ITEM NO. 4 SCALE: 1:50,000  
 FLYING COMPLETED 7-13-51 INDEX COPIED 7-19-51  
 ROBINSON AERIAL SURVEYS, INC. NEWARK, N.J.  
 GRAPHIC SCALE IN MILES (PHOTO INDEX)

1951



STEARNS 1951 -1

5-23-103  
 BTX-2-103