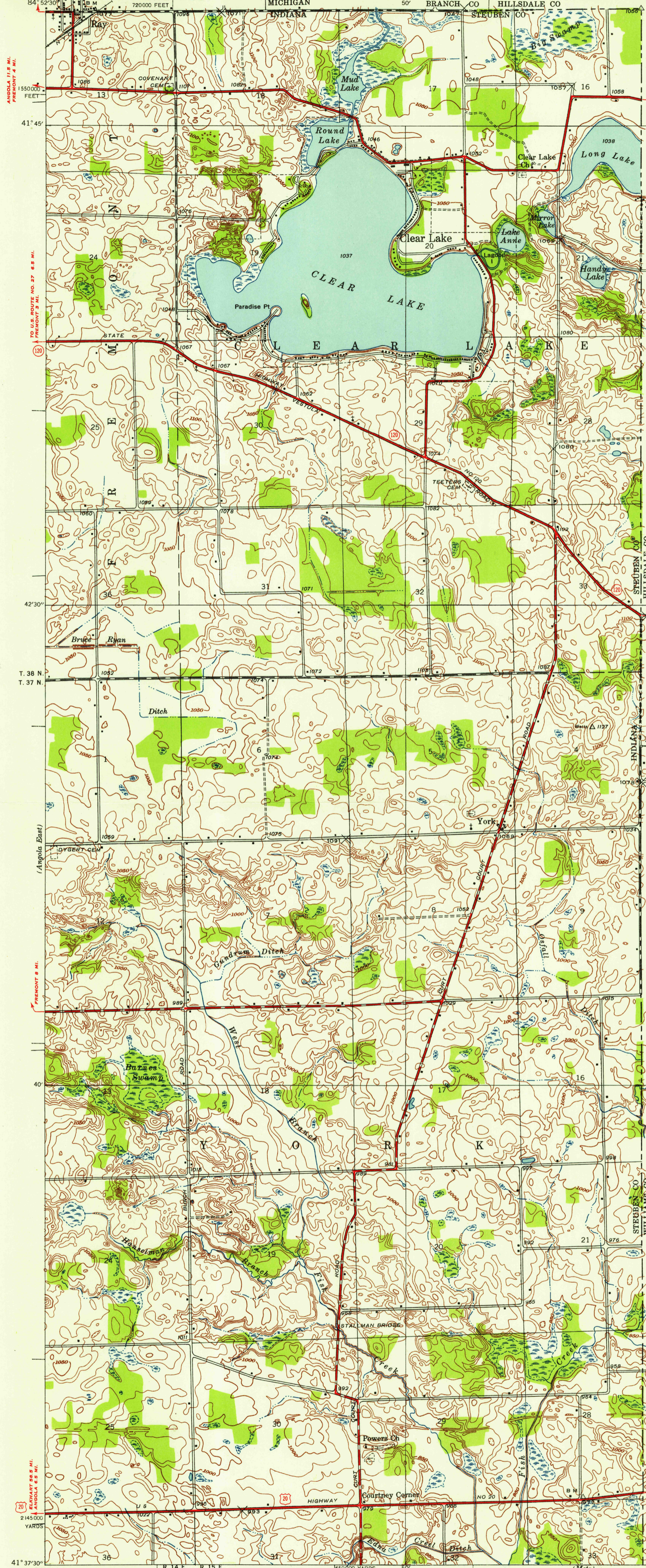


U.S.G.S. FILE COPY TOPOGRAPHIC DIVISION

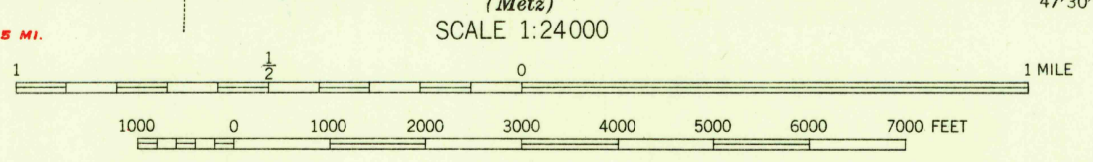
INDIANA-OHIO-MICHIGAN CLEAR LAKE QUADRANGLE



THIS OHIO AREA IS SHOWN ON THE MAP OF PIONEER QUADRANGLE, SURVEYED IN 1911, SCALE 1:82,500

Albert Pike, Division Engineer
Topography by G. A. Mock
Surveyed in 1938

APPROXIMATE MEAN DECLINATION, 1938



Contour interval 10 feet
Datum is mean sea level

USGS Historical File Topographic Division

Preliminary edition 1939 750,000 FEET 41° 37' 30"

Polygonic projection. 1927 North American datum
5000 yard grid based on U. S. zone system, B
10000 foot grid based on Indiana (East)
rectangular coordinate system.

ROUTES USUALLY TRAVELED
HARD IMPROVED HIGHWAYS
OTHER SURFACE IMPROVEMENTS
U.S. ROUTE
STATE ROUTE

CLEAR LAKE, IND.-OHIO-MICH. N4137.5-W8445/7.5

U.S.G.S. FILE COPY TOPOGRAPHIC DIVISION