

48° 15' N
126° 15' W

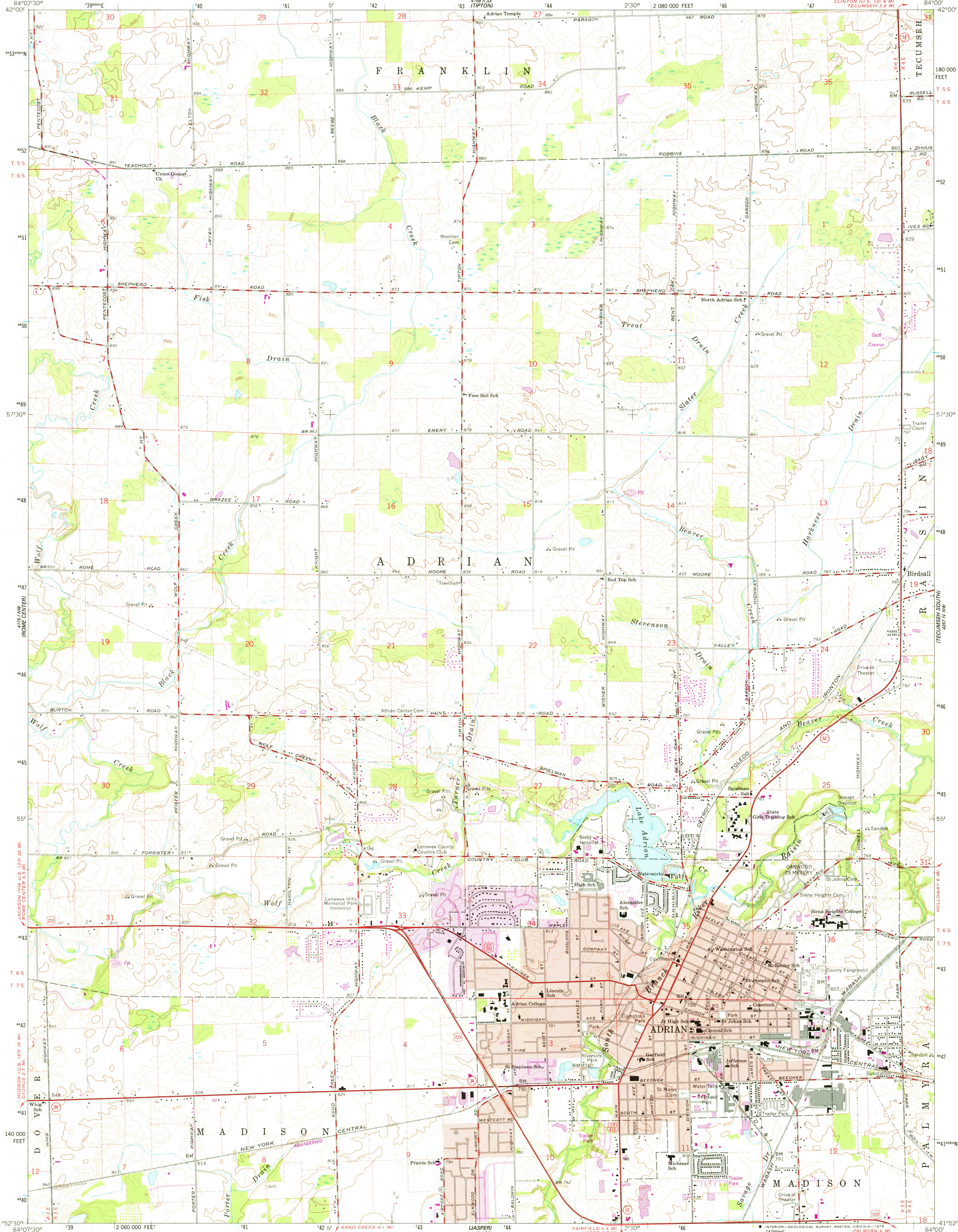
UNITED STATES
DEPARTMENT OF THE INTERIOR
GEOLOGICAL SURVEY



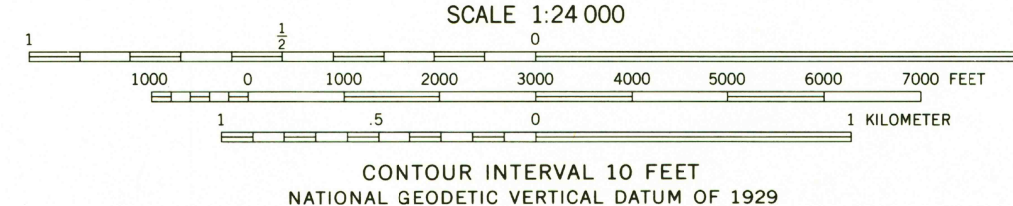
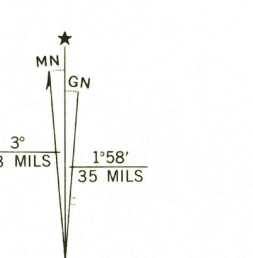
MICHIGAN
STATE HIGHWAY DEPARTMENT

ADRIAN QUADRANGLE
MICHIGAN-LENAWEE CO.
7.5 MINUTE SERIES (TOPOGRAPHIC)

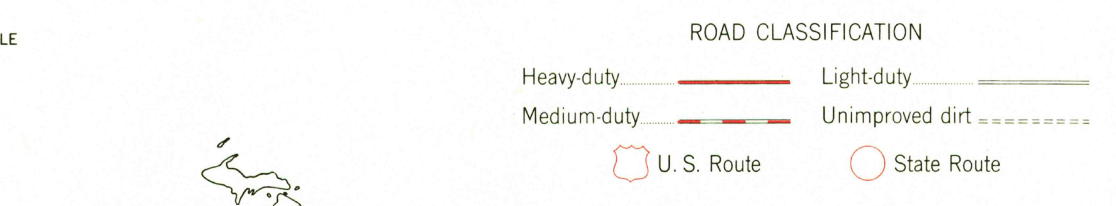
48° 15' N
126° 15' W



Mapped, edited, and published by the Geological Survey
Control by USGS and USC&GS
Topography by photogrammetric methods from aerial photographs taken 1958. Field checked 1962
Polyconic projection. 1927 North American datum
10,000-foot grid based on Michigan coordinate system, south zone
To place on the predicted North American Datum 1983
move the projection lines 0 meters south and
5 meters west as shown by dashed corner ticks
1000-meter Universal Transverse Mercator grid ticks,
zone 16, shown in blue
Red tint indicates areas in which only landmark buildings are shown
Fine red dashed lines indicate selected fence and field lines where
generally visible on aerial photographs. This information is unchecked



THIS MAP COMPLIES WITH NATIONAL MAP ACCURACY STANDARDS
FOR SALE BY U.S. GEOLOGICAL SURVEY, RESTON, VIRGINIA 22092
AND BY THE GEOLOGICAL SURVEY DIVISION
MICHIGAN DEPARTMENT OF NATURAL RESOURCES, LANSING, MICHIGAN 48909
A FOLDER DESCRIBING TOPOGRAPHIC MAPS AND SYMBOLS IS AVAILABLE ON REQUEST



Revisions shown in purple compiled from aerial photographs taken 1977. Map edited 1979
This information not field checked
Purple tint indicates extension of urban area

USGS
Historical File
Topographic Division

ADRIAN, MICH.
N4152.5-W8400/7.5

1962
PHOTOREVISED 1979
DMA 4167 I NE-SERIES V862

APR 16 1990

1050