

ADRIAN, MICHIGAN—OHIO—INDIANA

30 X 60 MINUTE SERIES (TOPOGRAPHIC)

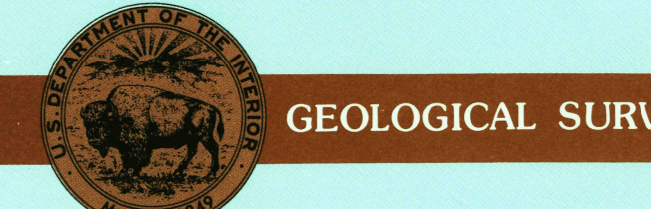
Adrian MICHIGAN—OHIO—INDIANA

1:100 000-scale metric topographic map



30 X 60 MINUTE QUADRANGLE SHOWING

- Contours and elevations in meters
- Highways, roads and other manmade structures
- Water features
- Woodland areas
- Geographic names



1990

Produced by the United States Geological Survey
 Compiled from USGS 1:24 000-scale topographic maps dated 1959-81. Planimetry revised from aerial photographs taken 1983 and other source data. Revised information not field checked. Map edited 1990
 Projection and 10 000-meter grid, zone 16, Universal Transverse Mercator
 25 000-foot grid ticks based on Michigan coordinate system, south zone and Ohio coordinate system, north zone, and Indiana coordinate system, east zone
 1927 North American Datum
 To place on the predicted North American Datum 1983, move the projection lines 3 meters west
 There may be private inholdings within the boundaries of the National or State reservations shown on this map

CONTOUR INTERVAL 5 METERS
 NATIONAL GEODETIC DATUM OF 1929
 ELEVATIONS SHOWN TO THE NEAREST METER

THIS MAP COMPLIES WITH NATIONAL MAP ACCURACY STANDARDS

| CONVERSION TABLE | | DECLINATION DIAGRAM | | ADJOINING MAPS | |
|--|----------|---|--|----------------|---|
| Meters | Feet | Magnetic Declination | | 1 | 2 |
| 1 | 3.2808 | UTM grid convergence (GN and 1983 magnetic declination MDM) at center of map (Diagram is approximate) | | 3 | 4 |
| 5 | 16.4035 | 1:100 000 | | 5 | 6 |
| 10 | 32.8070 | 30 MILES | | 7 | 8 |
| 20 | 65.6140 | 1:100 000 | | | |
| 30 | 98.4210 | | | | |
| 40 | 131.2280 | | | | |
| 50 | 164.0350 | | | | |
| 60 | 196.8420 | | | | |
| 70 | 229.6490 | | | | |
| 80 | 262.4560 | | | | |
| 90 | 295.2630 | | | | |
| 100 | 328.0700 | | | | |
| To convert meters to feet multiply by 3.2808 | | | | | |
| To convert feet to meters multiply by 0.3048 | | | | | |

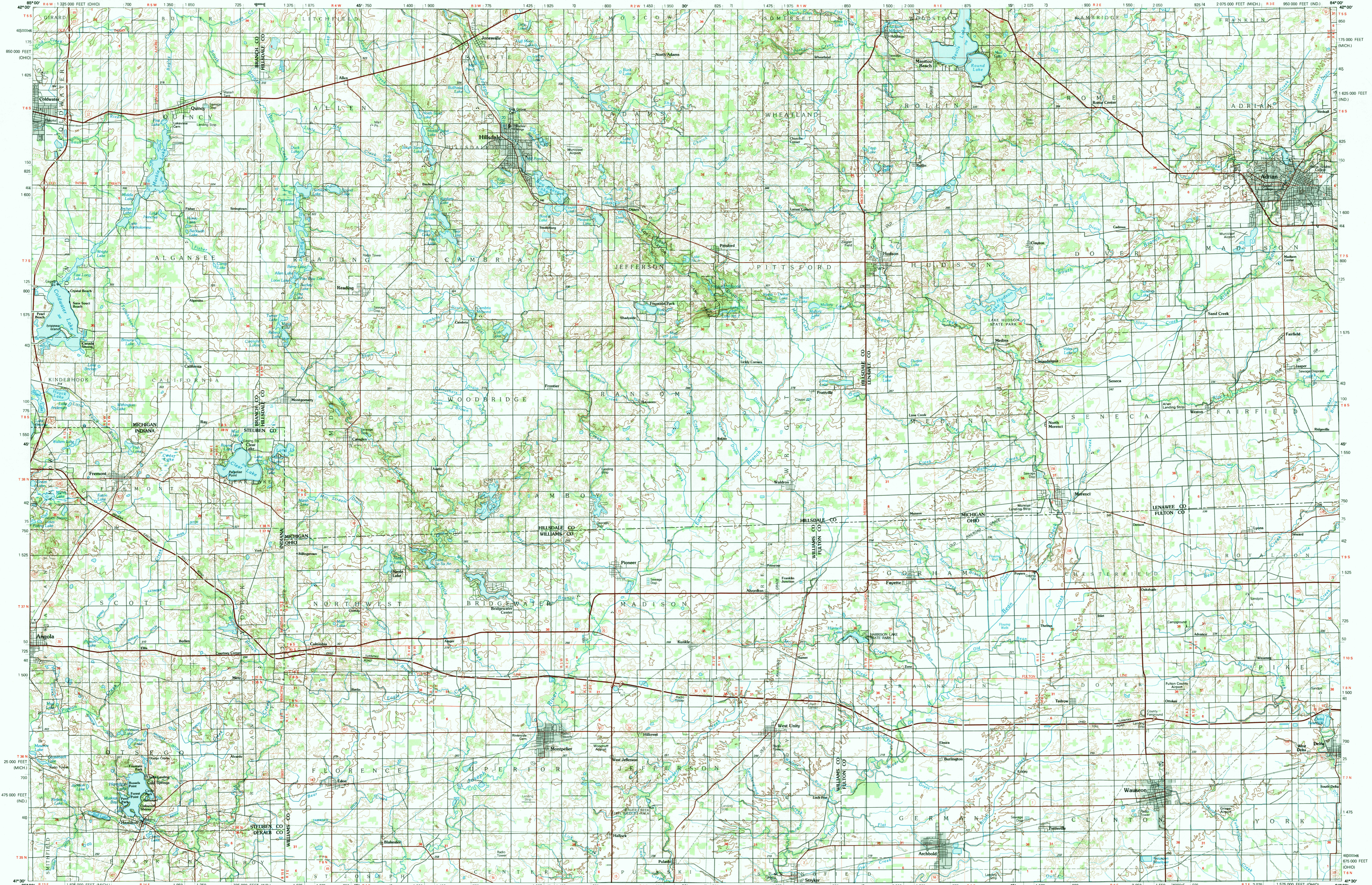
FOR SALE BY U.S. GEOLOGICAL SURVEY DENVER, COLORADO 80225, OR RESTON, VIRGINIA 22092



Topographic Map Symbols

| | |
|---|--|
| Primary highway, hard surface | |
| Secondary highway, hard surface | |
| Light duty road, principal street, hard or improved surface | |
| Other road or street, road | |
| Route marker, Interstate, U.S. State | |
| Railroad: standard gage, narrow gage | |
| Bridge, overpass, underpass | |
| Tunnel: road, railroad | |
| Built up area, locality, elevation | |
| Airport, landing field, landing strip | |
| National boundary | |
| State boundary | |
| County boundary | |
| National or State reservation boundary | |
| Land grant boundary | |
| U.S. public lands survey: range, township, section | |
| Range, township, section line: protracted | |
| Power transmission line: pipeline | |
| Dam; dam with lock | |
| Cemetery, building | |
| Well: water, water well, spring | |
| Mine shaft; adit or cave; mine, quarry, gravel pit | |
| Campground; picnic area; U.S. location monument | |
| Ruins; cliff dwelling | |
| Distorted surface: strip mine, lava, sand | |
| Contours: index, intermediate, supplementary | |
| Bathymetric contours: index, intermediate | |
| Stream, lake: perennial, intermittent | |
| Rapids, large and small; falls, large and small | |
| Area to be submerged; marsh, swamp | |
| Land subject to controlled inundation; woodland | |
| Scrub, mangrove | |
| Orchard, vineyard | |

A pamphlet describing topographic maps is available on request



ADRIAN, MICHIGAN—OHIO—INDIANA

41084-EI-TM-100

1990