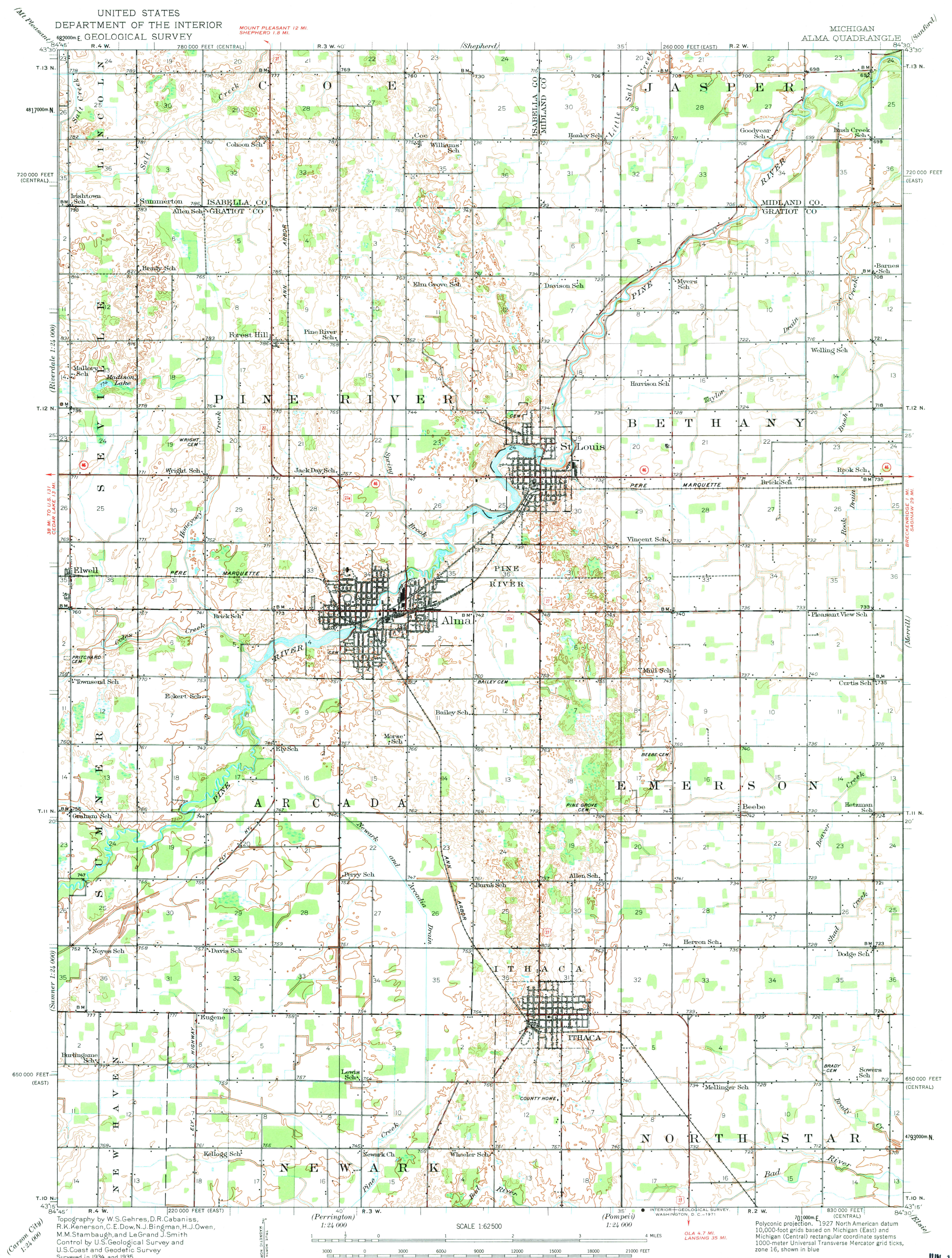


UNITED STATES
DEPARTMENT OF THE INTERIOR
GEOLOGICAL SURVEY

MICHIGAN
ALMA QUADRANGLE



Topography by W.S. Gehres, D.R. Cabaniss, R.K. Kenerson, C.E. Dow, N.J. Bingman, H.J. Owen, M.M. Stambaugh, and LeGrand J. Smith. Control by U.S. Geological Survey and U.S. Coast and Geodetic Survey. Surveyed in 1934 and 1935.

SCALE 1:62,500
 0 3000 6000 9000 12000 15000 18000 21000 FEET
 0 1 2 3 4 5 KILOMETERS
 CONTOUR INTERVAL 10 FEET
 DATUM IS MEAN SEA LEVEL

ROAD CLASSIFICATION
 Heavy-duty ——— Light-duty ———
 Medium-duty ——— Unimproved dirt ———
 U.S. Route State Route

Polyconic projection, 1927 North American datum
 10,000-foot grids based on Michigan (East) and
 Michigan (Central) rectangular coordinate systems
 1000-meter Universal Transverse Mercator grid ticks,
 zone 16, shown in blue

ALMA, MICH.
 N 4315—W 8430/15
 1935

JUN 17 1975

FOR SALE BY U.S. GEOLOGICAL SURVEY, WASHINGTON, D. C. 20242
 A FOLDER DESCRIBING TOPOGRAPHIC MAPS AND SYMBOLS IS AVAILABLE ON REQUEST

USGS
 HISTORICAL FILE
 TOPOGRAPHIC DIVISION

1715