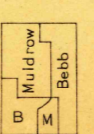


U. S. G. S.
FILE COPY
Ed. Div. Topographic Maps.

U. S. G. S.
FILE COPY
Ed. Div. Topographic Maps.

ENGRAVED FEB. 1904 BY U. S. G. S. R. 4. E. 50' R. 5. E. 40' R. 7. E. 42° 00'

Jno. H. Renshawe, Geographer in charge.
Control by U. S. Lake Survey and Geo. T. Hawkins.
Topography by Robert Muldrow and E. C. Bebb.
Surveyed in 1901-1902 in cooperation with the State of Michigan.



APPROXIMATE MEAN DECLINATION 1902

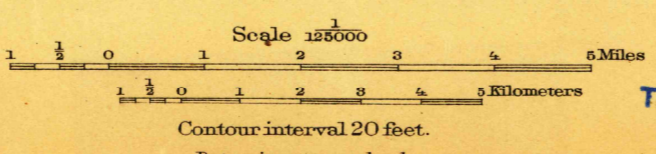


DIAGRAM OF TOWNSHIP

6	5	4	3	2	1
7	8	9	10	11	12
13	14	15	16	17	18
19	20	21	22	23	24
25	26	27	28	29	30
31	32	33	34	35	36

Ed. Div. Topographic Maps. Edition of April 1904, reprinted 1917.

NOV 30 1917 3565

ANN ARBOR, MICH.

NOTE: Geologic folio 155, price 25 cents, treats of the geology and the limestone, road material, clay, marl, cement, peat, and underground water resources of this area.