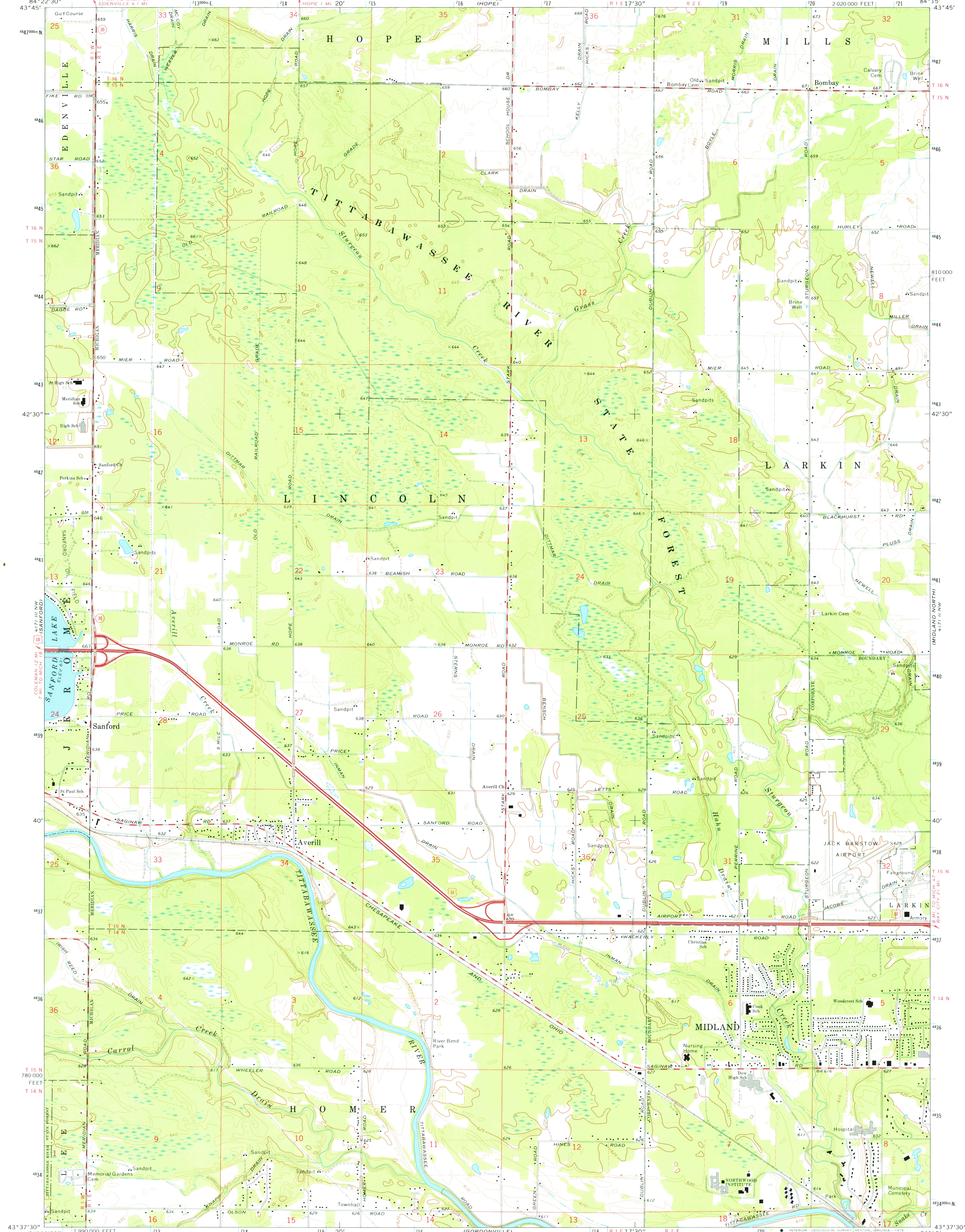


UNITED STATES  
DEPARTMENT OF THE INTERIOR  
GEOLOGICAL SURVEY

AVERILL QUADRANGLE  
MICHIGAN—MIDLAND CO.  
7.5 MINUTE SERIES (TOPOGRAPHIC)  
NE/4 SANFORD 15' QUADRANGLE



Mapped, edited, and published by the Geological Survey

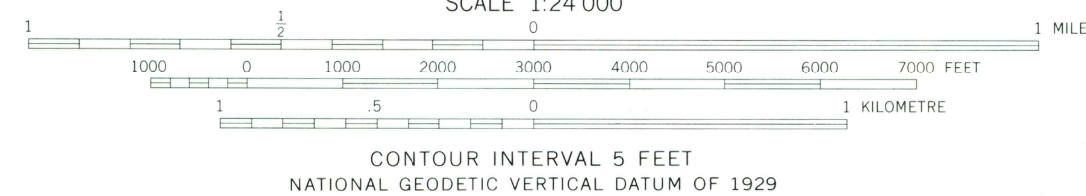
Control by USGS and NOS/NOAA

Topography by photogrammetric methods from aerial photographs taken 1972. Field checked 1973

Projection and 10,000-foot grid ticks: Michigan coordinate system, south zone (Lambert conformal conic)  
1000-metre Universal Transverse Mercator grid ticks, zone 16, shown in blue. 1927 North American datum

Fine red dashed lines indicate selected fence and field lines where generally visible on aerial photographs. This information is unchecked

UTM GRID AND 1973 MAGNETIC NORTH DECLINATION AT CENTER OF SHEET



ROAD CLASSIFICATION

Primary highway, hard surface	Light-duty road, hard or improved surface
Secondary highway, hard surface	Unimproved road
Interstate Route	U. S. Route
	State Route



THIS MAP COMPLIES WITH NATIONAL MAP ACCURACY STANDARDS FOR SALE BY U. S. GEOLOGICAL SURVEY, RESTON, VIRGINIA 22092 A FOLDER DESCRIBING TOPOGRAPHIC MAPS AND SYMBOLS IS AVAILABLE ON REQUEST

USGS  
Historical File  
Topographic Division

AVERILL, MICH.  
NE/4 SANFORD 15' QUADRANGLE  
N4337.5—W8415.7.5

1973  
AMS 4171 III NE—SERIES V882

APR 11 1977