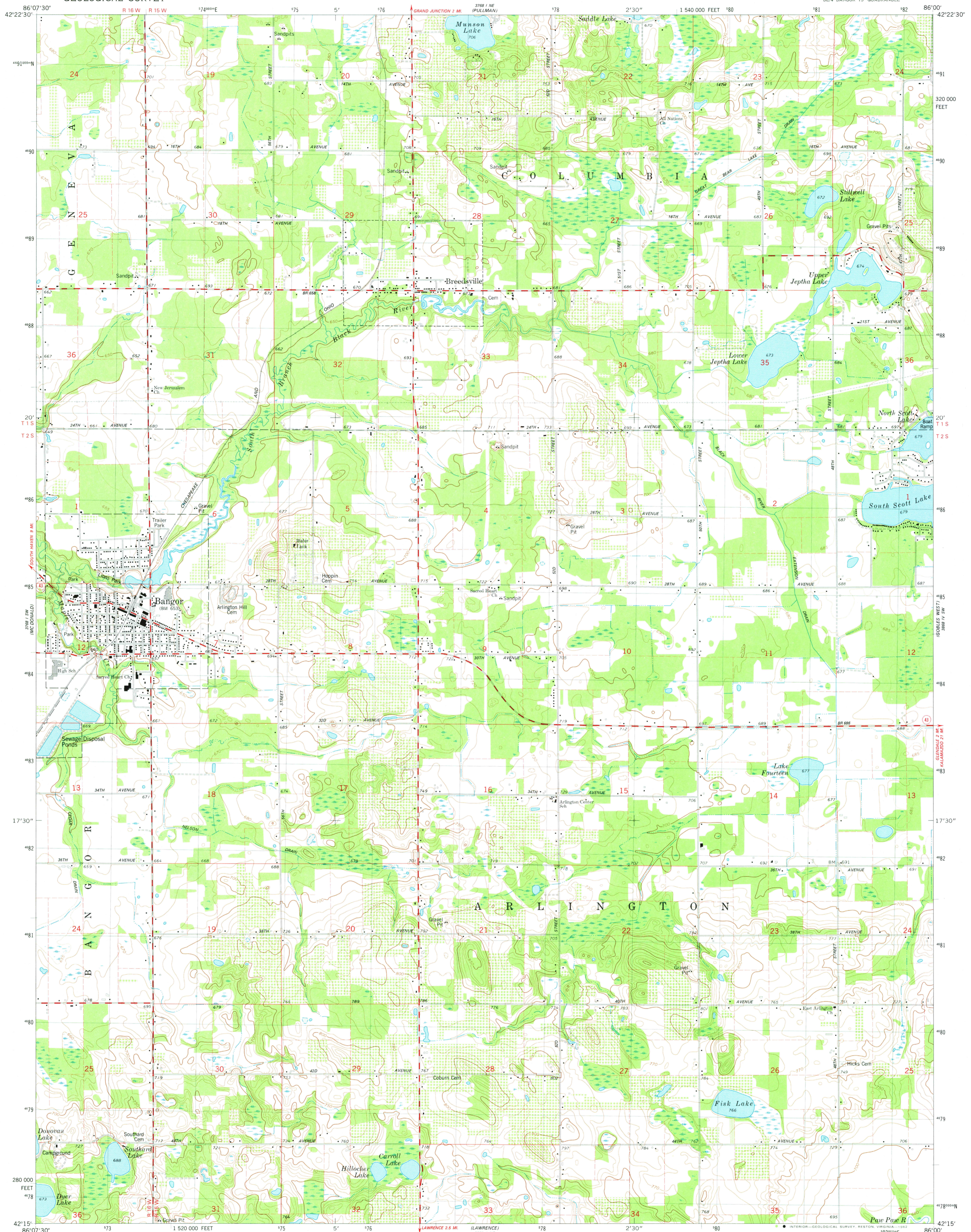
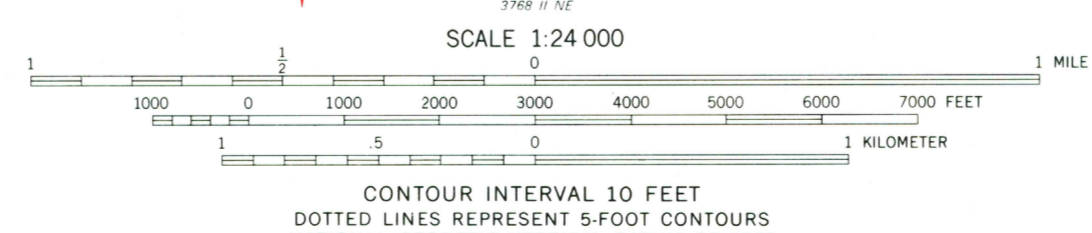
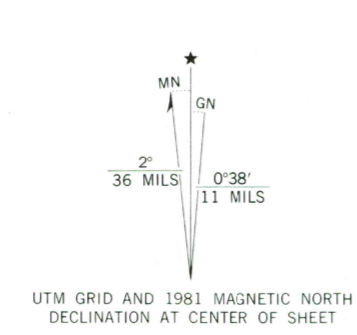


3768 I SE  
(COMPOSITE)

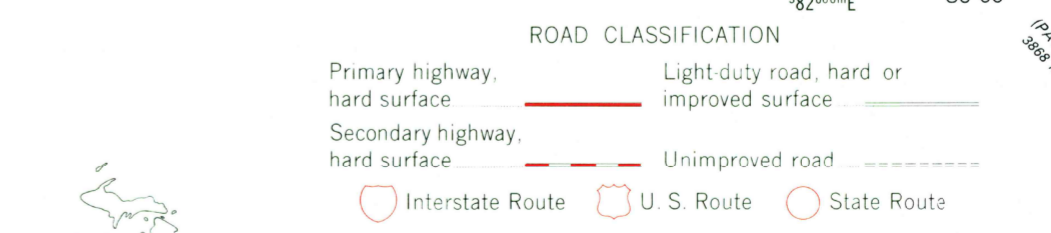


Mapped, edited, and published by the Geological Survey  
Control by USGS and NOS/NOAA  
Topography by photogrammetric methods from aerial photographs  
taken 1976. Field checked 1977. Map edited 1981  
Projection and 10,000-foot grid ticks: Michigan coordinate  
system, south zone (Lambert conformal conic)  
1000-meter Universal Transverse Mercator grid, zone 16  
1927 North American Datum  
To place on the predicted North American Datum 1983  
move the projection lines 1 meter north and  
2 meters east as shown by dashed corner ticks  
Fine red dashed lines indicate selected fence and field lines where  
generally visible on aerial photographs. This information is unchecked



CONTOUR INTERVAL 10 FEET  
DOTTED LINES REPRESENT 5-FOOT CONTOURS  
NATIONAL GEODETIC VERTICAL DATUM OF 1929

THIS MAP COMPLIES WITH NATIONAL MAP ACCURACY STANDARDS  
FOR SALE BY U. S. GEOLOGICAL SURVEY, RESTON, VIRGINIA 22092  
AND BY THE GEOLOGICAL SURVEY DIVISION  
MICHIGAN DEPARTMENT OF NATURAL RESOURCES, LANSING, MICHIGAN 48909  
A FOLDER DESCRIBING TOPOGRAPHIC MAPS AND SYMBOLS IS AVAILABLE ON REQUEST



BANGOR, MICH.  
SE 4 BANGOR 15' QUADRANGLE  
N4215-W8600/7.5

1981  
DMA 3768 I SE-SERIES W862

MAR 10 1982

2000