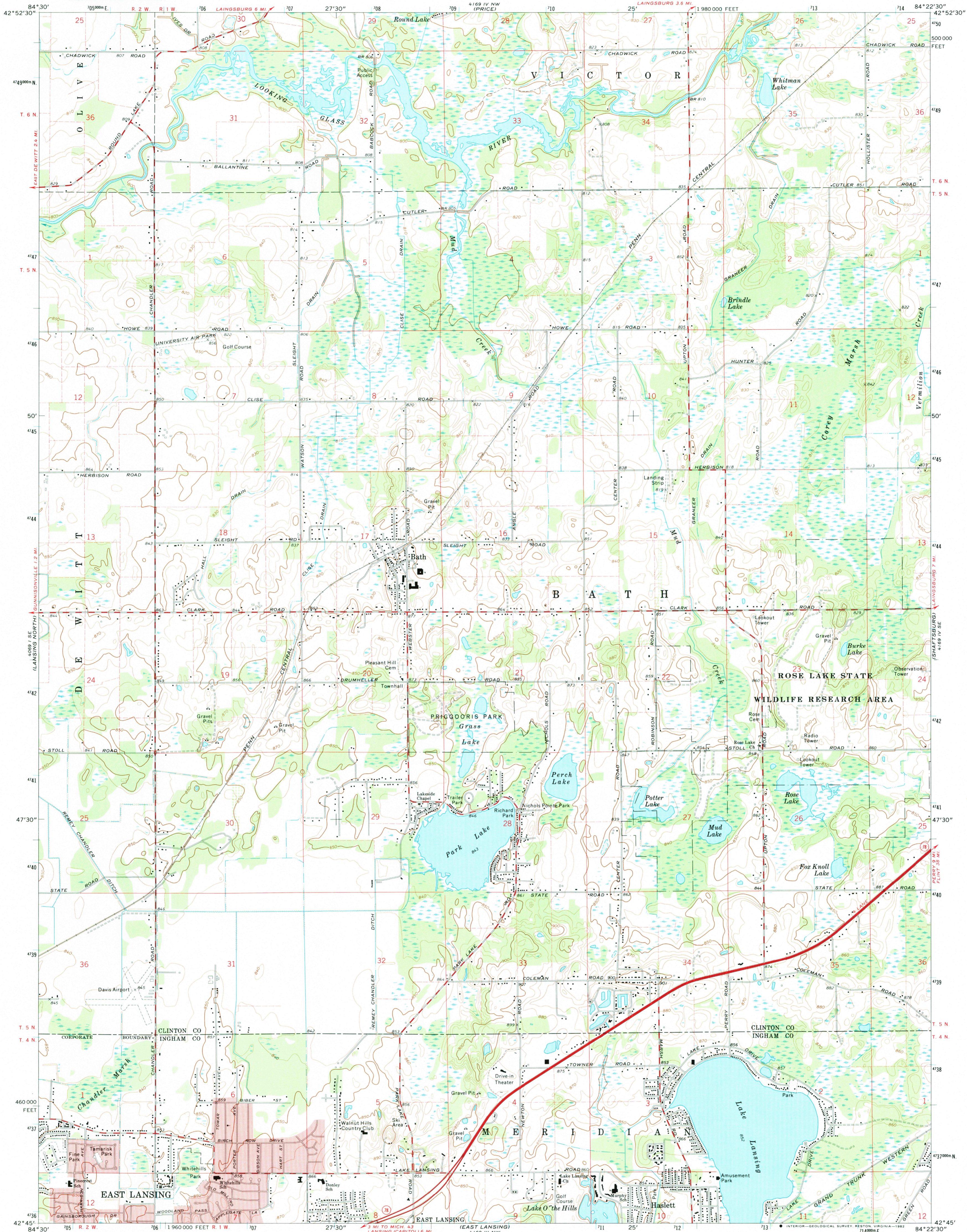


UNITED STATES
DEPARTMENT OF THE INTERIOR
GEOLOGICAL SURVEY

BATH QUADRANGLE
MICHIGAN
7.5 MINUTE SERIES (TOPOGRAPHIC)



Mapped, edited, and published by the Geological Survey

Control by USGS and USC&GS

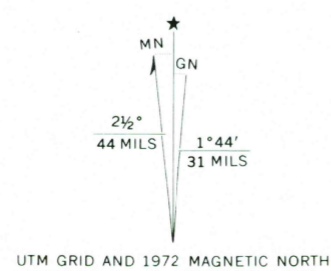
Topography by photogrammetric methods from aerial photographs taken 1970. Field checked 1972

Polycyclic projection. 1927 North American datum 10,000-foot grid based on Michigan coordinate system, south zone 1000-meter Universal Transverse Mercator grid ticks, zone 16, shown in blue

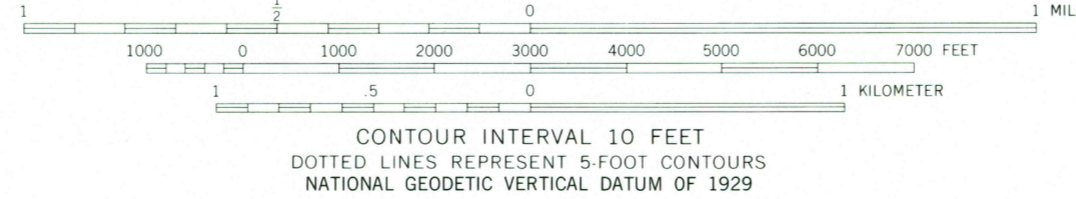
To place on the predicted North American Datum 1983 move the projection lines 1 meter north and 3 meters west as shown by dashed corner ticks

There may be private inholdings within the boundaries of the National or State reservations shown on this map

Map photostereoscopic 1978
No major culture or drainage changes observed



Red tint indicates areas in which only landmark buildings are shown



THIS MAP COMPLIES WITH NATIONAL MAP ACCURACY STANDARDS FOR SALE BY U. S. GEOLOGICAL SURVEY, RESTON, VIRGINIA 22092 AND BY THE GEOLOGICAL SURVEY DIVISION MICHIGAN DEPARTMENT OF NATURAL RESOURCES, LANSING, MICHIGAN 48909 A FOLDER DESCRIBING TOPOGRAPHIC MAPS AND SYMBOLS IS AVAILABLE ON REQUEST



QUADRANGLE LOCATION

ROAD CLASSIFICATION	
Primary highway, hard surface	Light-duty road, hard or improved surface
Secondary highway, hard surface	Unimproved road
Interstate Route	U. S. Route
	State Route

BATH, MICH.

N4245-W8422.5/7.5

1972
PHOTOINSPECTED 1978
AMS 4169 IV SW-SERIES V862

Handwritten notes and signatures, including 'DEC 1978' and 'WILLIAMSON'.