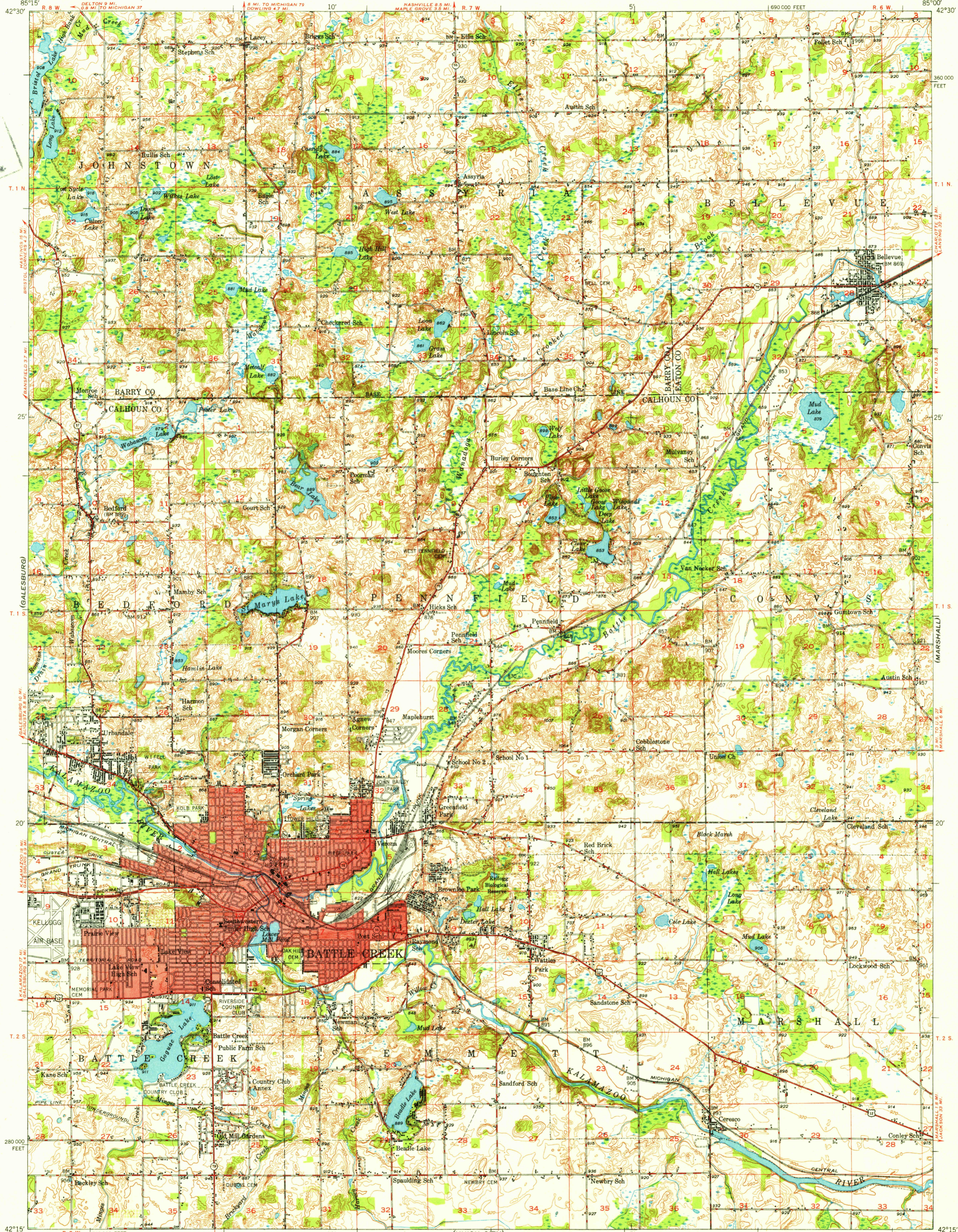
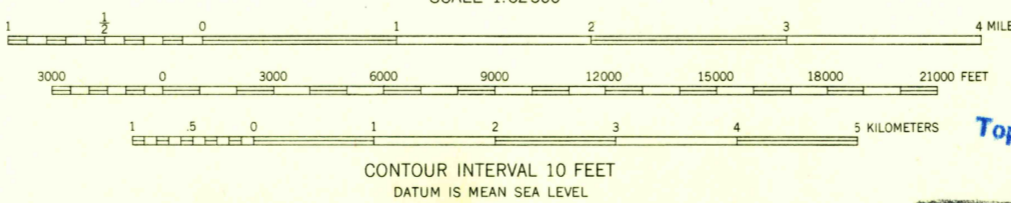
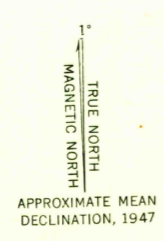


(CHARLOTTE)



U.S.G.S.
FILE COPY
Inspection and Editing.

Maped, edited, and published by the Geological Survey
Control by USGS and USC&GS
Culture and drainage from aerial photographs taken 1946
Topography by plane-table methods 1947. Field check 1947
Polyconic projection. 1927 North American datum
10,000-foot grids based on Michigan coordinate system,
central zone
Red tint indicates areas in which only
landmark buildings are shown



USGS
Historical File
Topographic Division

ROAD CLASSIFICATION

| | |
|---|---------------------|
| HARD-SURFACE ALL WEATHER ROADS | DRY WEATHER ROADS |
| Heavy-duty ——— LANE 6 LANE | Improved dirt ——— |
| Medium-duty ——— LANE 6 LANE | Unimproved dirt ——— |
| Loose-surface, graded, or narrow hard-surface ——— | |
| U. S. Route | State Route |

U.S.G.S.
FILE COPY
Inspection and Editing.

BATTLE CREEK, MICH.
N4215-W8500/15
EDITION OF 1950

THIS MAP COMPLIES WITH NATIONAL MAP ACCURACY STANDARDS
FOR SALE BY U. S. GEOLOGICAL SURVEY, WASHINGTON 25, D. C.
A FOLDER DESCRIBING TOPOGRAPHIC MAPS AND SYMBOLS IS AVAILABLE ON REQUEST