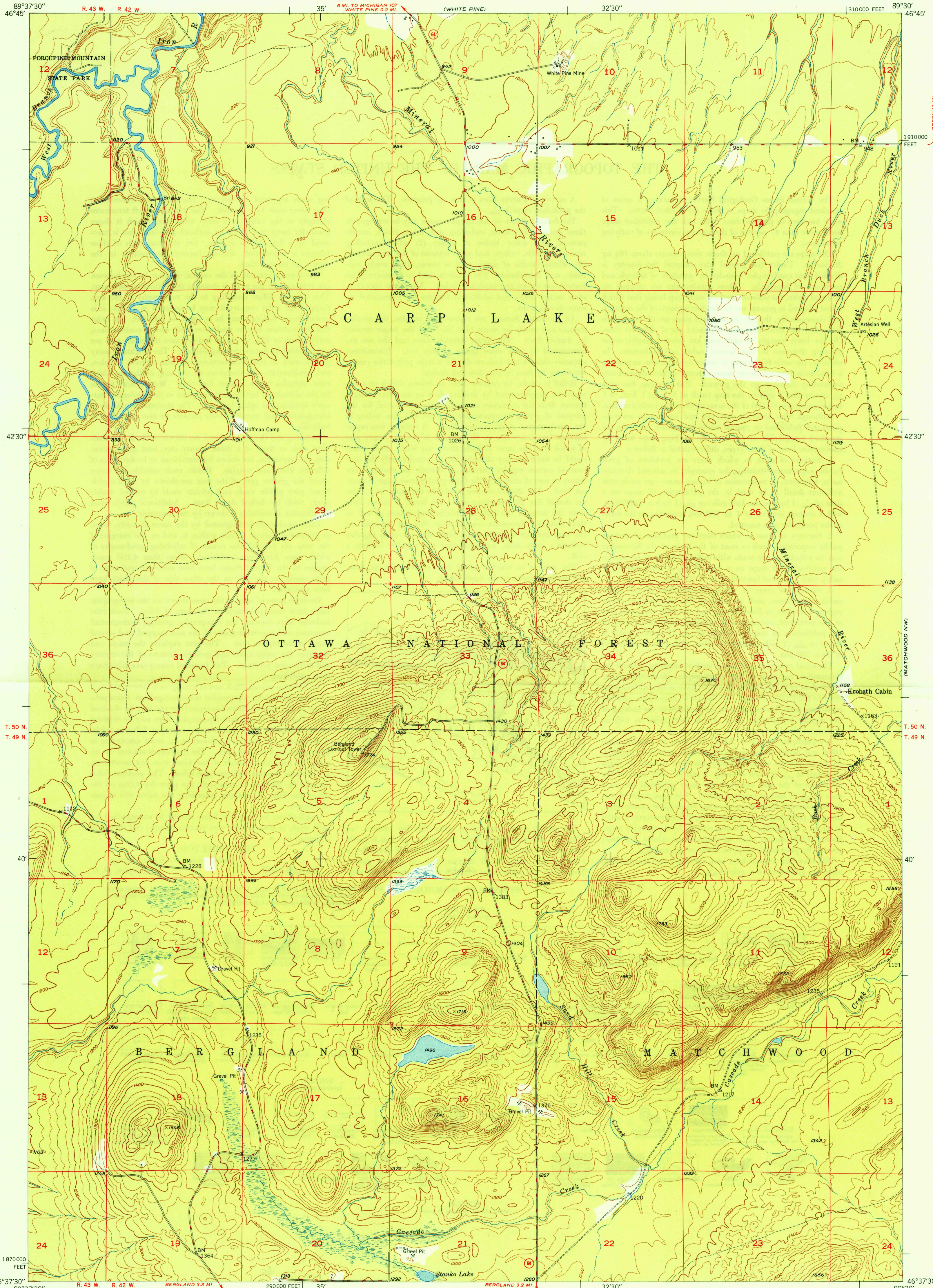
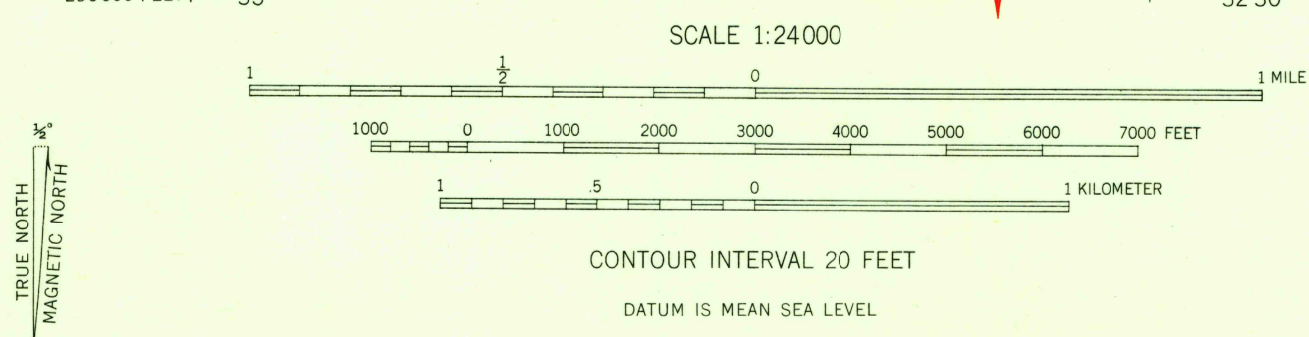


U.S.G.S.
FILE COPY
Inspection and Editing.



Mapped, edited, and published by the Geological Survey
Control by USGS and USC&GS
Topography from aerial photographs by multiplex methods
Aerial photographs taken 1946. Field check 1948
Polyconic projection. 1927 North American datum
10,000-foot grid based on Michigan coordinate system,
west zone



ROAD CLASSIFICATION
HARD-SURFACE ALL WEATHER ROADS DRY WEATHER ROADS
Heavy-duty 3 LANE LANE Improved dirt
Medium-duty 2 LANE LANE Unimproved dirt
Loose-surface, graded, or narrow hard-surface
U. S. Route State Route

APPROXIMATE MEAN DECLINATION, 1948
THIS MAP COMPLIES WITH NATIONAL MAP ACCURACY STANDARDS
FOR SALE BY U. S. GEOLOGICAL SURVEY, WASHINGTON 25, D. C.

BERGLAND NE, MICH.
N4637.5-W8930/7.5
EDITION OF 1949

U.S.G.S.
FILE COPY
Inspection and Editing.