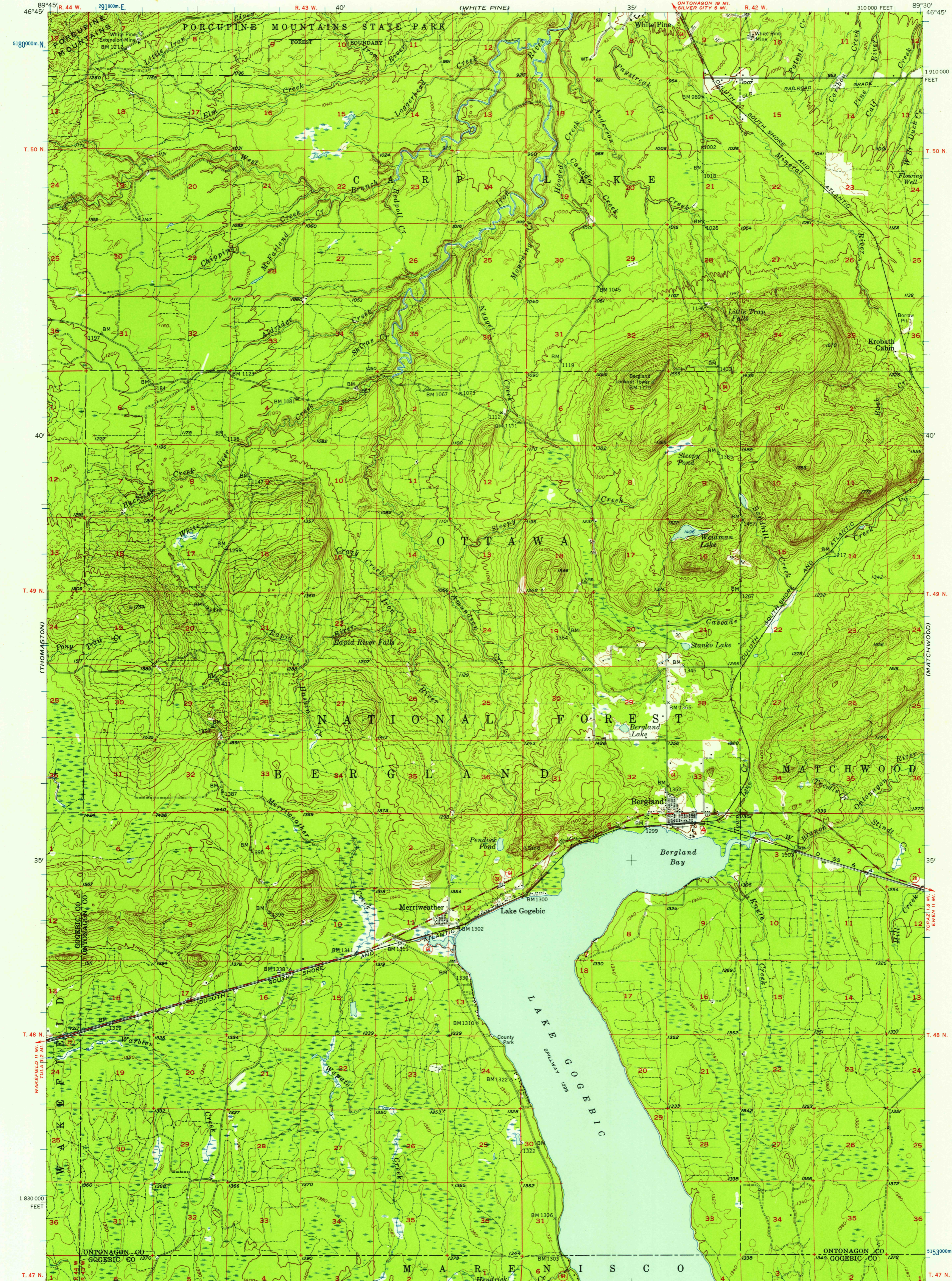


UNITED STATES  
DEPARTMENT OF THE INTERIOR  
GEOLOGICAL SURVEY

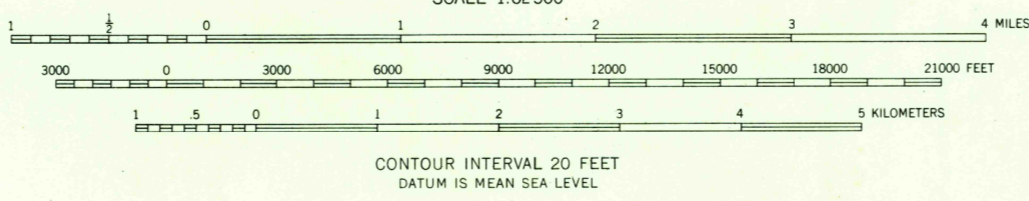
BERGLAND QUADRANGLE  
MICHIGAN  
15 MINUTE SERIES (TOPOGRAPHIC)



U.S.G.S.  
FILE COPY  
TOPOGRAPHIC DIVISION

U.S.G.S.  
FILE COPY  
TOPOGRAPHIC DIVISION

Mapped, edited, and published by the Geological Survey  
Control by USGS and USC&GS  
Topography from aerial photographs by photogrammetric methods  
Aerial photographs taken 1944, 1950-1952 and 1954  
Field check 1956  
Polyconic projection. 1927 North American datum  
10,000-foot grid based on Michigan coordinate system, west zone  
1000-meter Universal Transverse Mercator grid ticks,  
zone 16, shown in blue



ROAD CLASSIFICATION  
Medium-duty ——— Light-duty ———  
Unimproved dirt - - - - -  
○ State Route



The NE 1/4 of this area also covered by  
1:24,000 scale map of Bergland NE,  
7.5 minute quadrangle, surveyed 1956  
BERGLAND, MICH.  
N4630—W8930/15

THIS MAP COMPLIES WITH NATIONAL MAP ACCURACY STANDARDS  
FOR SALE BY U. S. GEOLOGICAL SURVEY, WASHINGTON 25, D. C.  
A FOLDER DESCRIBING TOPOGRAPHIC MAPS AND SYMBOLS IS AVAILABLE ON REQUEST

1956

OCT 24 1957  
3090