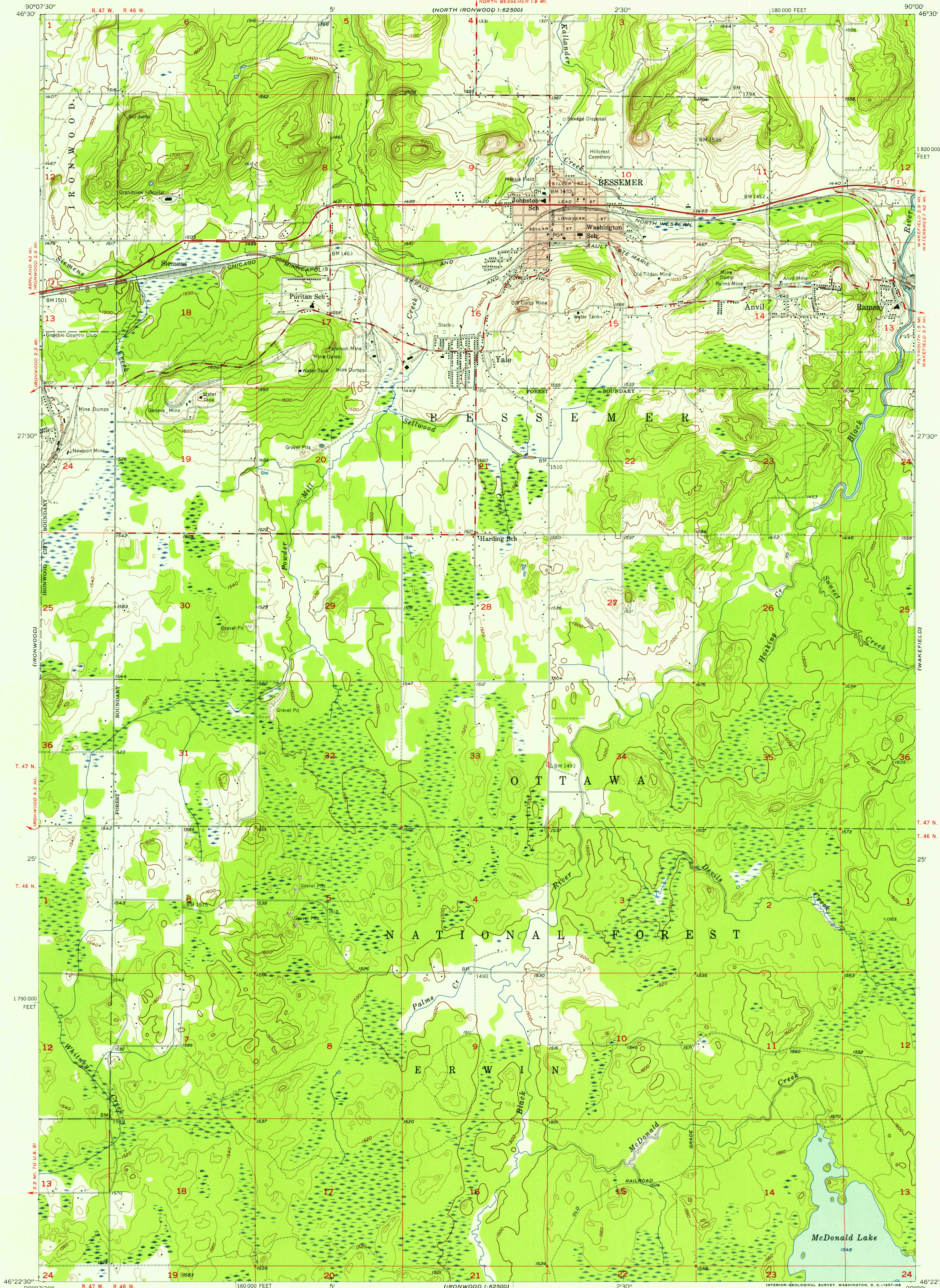


UNITED STATES
DEPARTMENT OF THE INTERIOR
GEOLOGICAL SURVEY

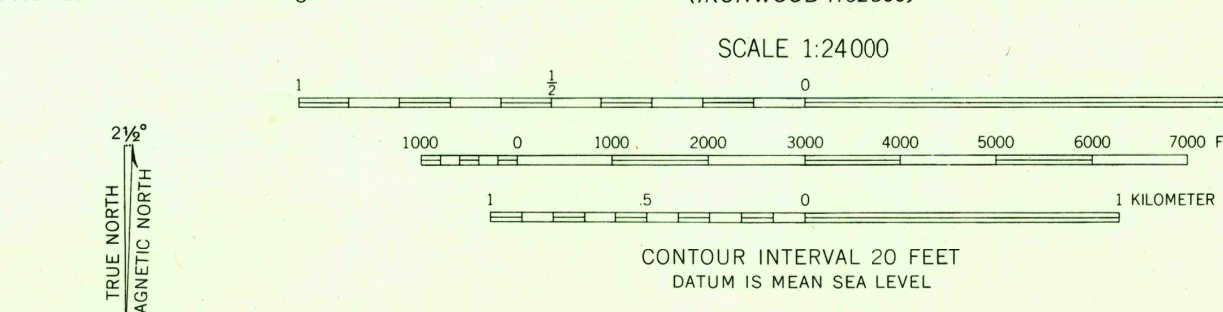
BESSEMER QUADRANGLE
MICHIGAN—GOGEBIC CO.
7.5 MINUTE SERIES (TOPOGRAPHIC)
NE/4 IRONWOOD 15' QUADRANGLE



U.S.G.S.
FILE COPY
TOPOGRAPHIC DIVISION

U.S.G.S.
FILE COPY
TOPOGRAPHIC DIVISION

Mapped, edited, and published by the Geological Survey
Control by USGS and USC&GS
Topography from aerial photographs by Kelsch plotter
Aerial photographs taken 1951. Field check 1955
Polyconic projection. 1927 North American datum
10,000-foot grid based on Michigan coordinate system,
west zone
Red tint indicates area in which only
landmark buildings are shown



USGS
Historical File
Topographic Division
MICHIGAN
QUADRANGLE LOCATION

ROAD CLASSIFICATION
Heavy-duty ——— Light-duty ———
Medium-duty ——— Unimproved dirt ———
U. S. Route State Route

BESSEMER, MICH.
NE/4 IRONWOOD 15' QUADRANGLE
N 4622.5—W 9000/7.5

1955