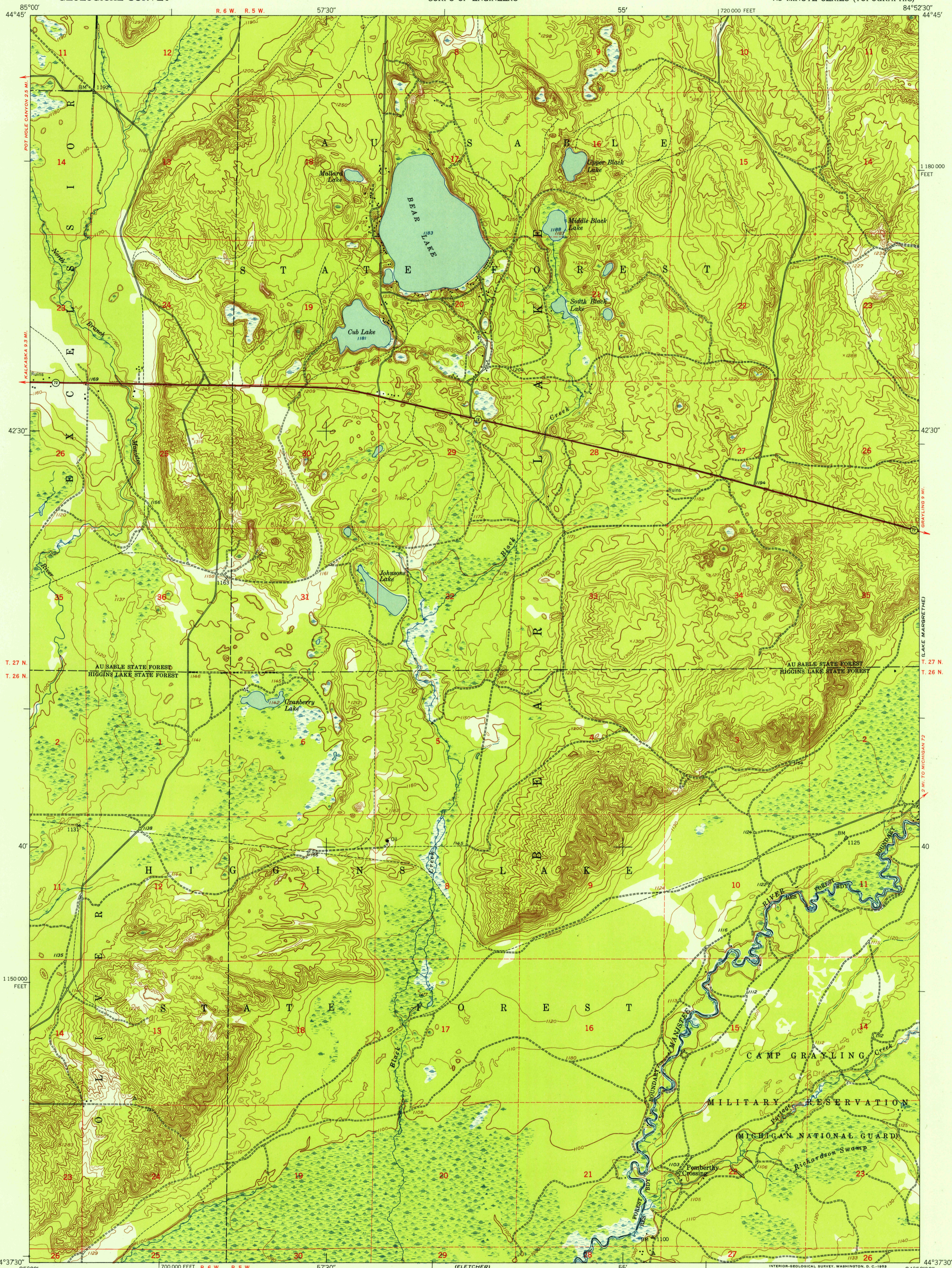
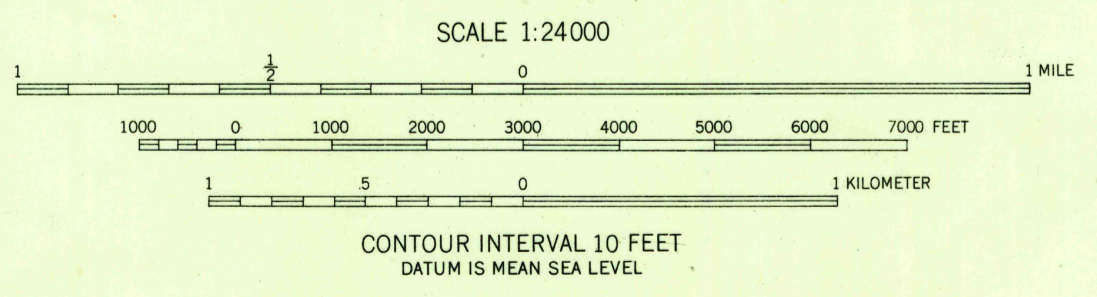


FILE COPY  
Interior and Editing



Mapped by the Army Map Service  
Published for civil use by the Geological Survey  
Control by USGS, USC&GS and USCE  
Topography from aerial photographs by multiplex methods  
Aerial photographs taken 1949. Field check 1949.  
Polyconic projection. 1927 North American datum  
10,000-foot grid based on Michigan coordinate system,  
central zone.  
No distinction is made between barns, dwellings,  
commercial and industrial buildings  
Dashed land lines indicate approximate locations  
Unchecked elevations are shown in brown



USGS  
Historical File  
Topographic Division

ROAD CLASSIFICATION	ROAD CLASSIFICATION	ROAD CLASSIFICATION
Heavy-duty	4 LANE 16 LANE	Light-duty
Medium-duty	4 LANE 16 LANE	Unimproved dirt

U. S. Route      State Route



U.S.G.S.  
FILE COPY  
Interior and Editing

BLACK CREEK, MICH.  
N4437.5-W8452.5/7.5  
1949

THIS MAP COMPLIES WITH NATIONAL MAP ACCURACY STANDARDS  
FOR SALE BY U. S. GEOLOGICAL SURVEY, WASHINGTON 25, D. C.  
A FOLDER DESCRIBING TOPOGRAPHIC MAPS AND SYMBOLS IS AVAILABLE ON REQUEST