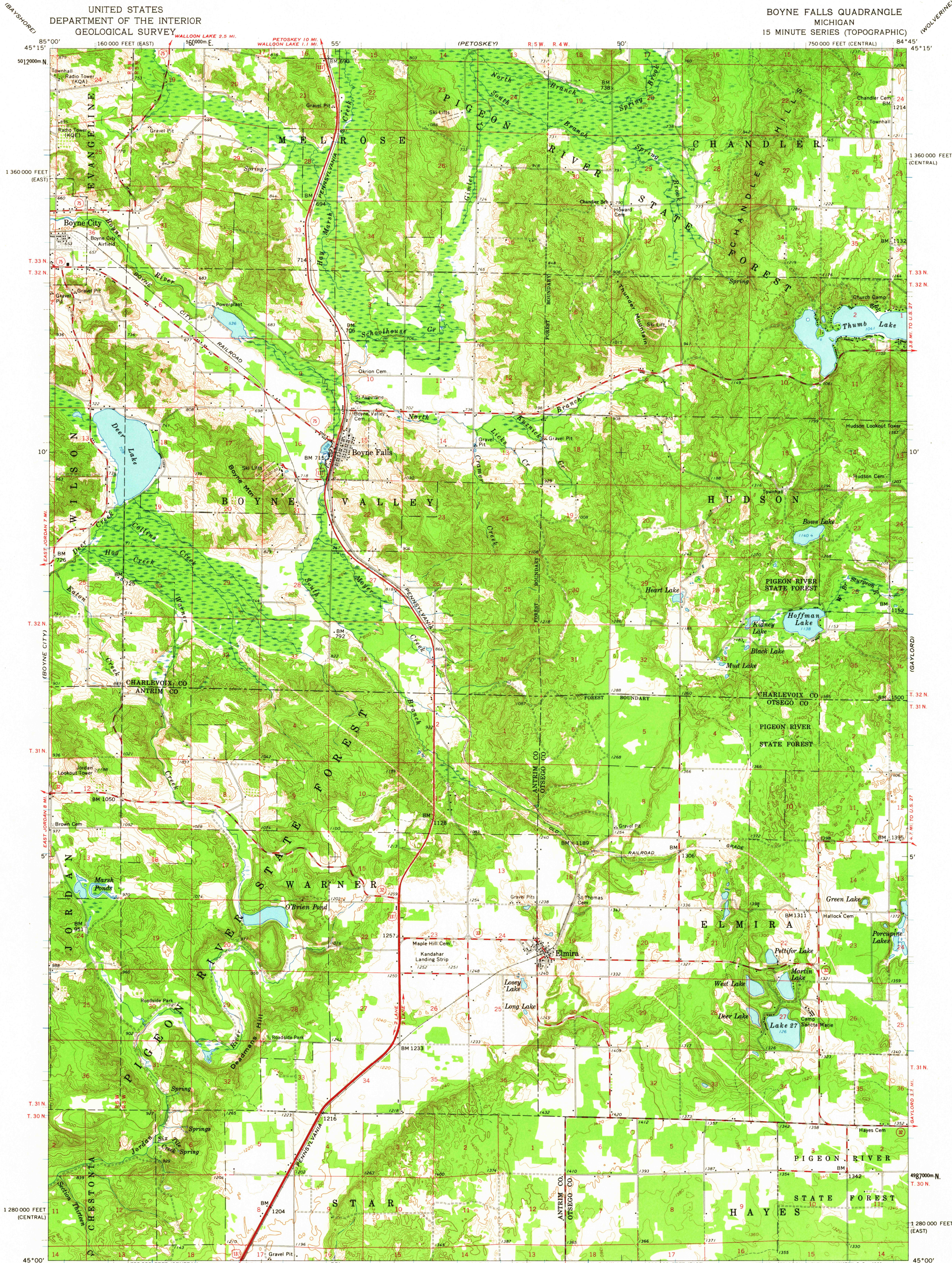
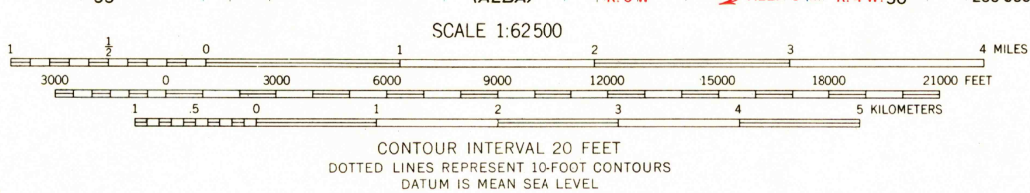


UNITED STATES
DEPARTMENT OF THE INTERIOR
GEOLOGICAL SURVEY

BOYNE FALLS QUADRANGLE
MICHIGAN
15 MINUTE SERIES (TOPOGRAPHIC)



Maped, edited, and published by the Geological Survey
Control by USGS, USC&GS, and USCE
Topography by photogrammetric methods from aerial
photographs taken 1953-54. Field checked 1961
Polyconic projection. 1927 North American datum
10,000-foot grids based on Michigan coordinate system,
central and east zones
1000-meter Universal Transverse Mercator grid ticks,
zone 16, shown in blue



USGS
Historical File
Topographic Division

ROAD CLASSIFICATION
Heavy-duty — Light-duty
Medium-duty — Unimproved dirt
U.S. Route — State Route



BOYNE FALLS, MICH.
N4500-W8445/15

1961

THIS MAP COMPLIES WITH NATIONAL MAP ACCURACY STANDARDS
FOR SALE BY U.S. GEOLOGICAL SURVEY, WASHINGTON 25, D. C.
A FOLDER DESCRIBING TOPOGRAPHIC MAPS AND SYMBOLS IS AVAILABLE ON REQUEST

2635