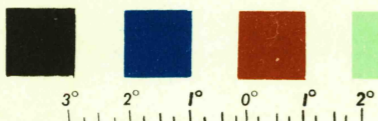


(ST. CHARLES)

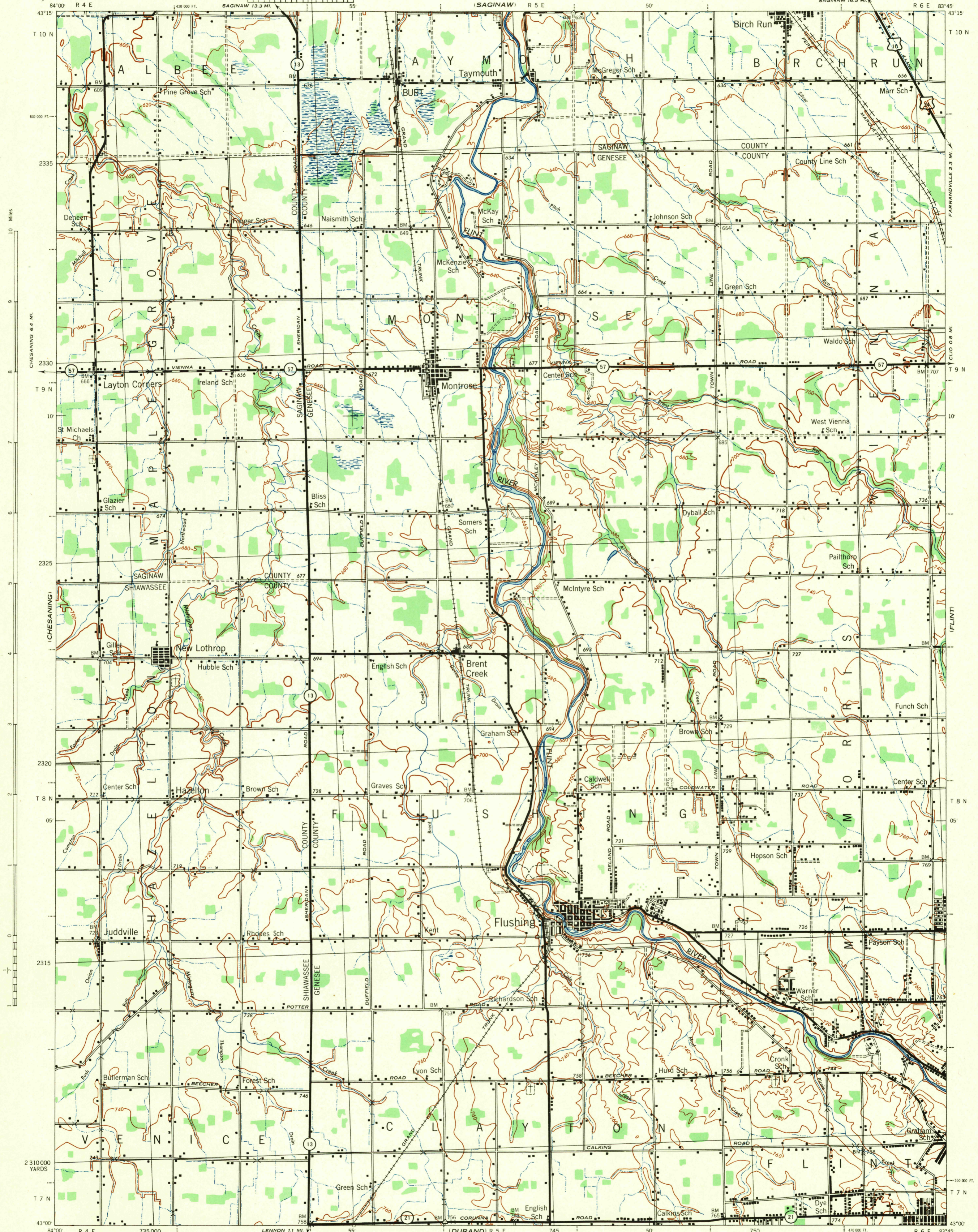
MICHIGAN 1:62,500



WAR DEPARTMENT
CORPS OF ENGINEERS, U. S. ARMY

FIRST EDITION-AMS 1

BURT QUADRANGLE
15 MINUTE SERIES



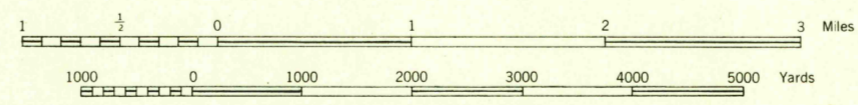
(CORUNNA)

First edition, 1943.
Prepared under the direction of the Chief of Engineers, U. S. Army, by the
Army Map Service, (PT), U. S. Army, Washington, D. C., 1942.
Based on U. S. G. S. quadrangle, Burt, 1:62,500 (1921).
Control by U. S. Geological Survey.
Surveys in cooperation with the State of Michigan, 1919.
Revised from single lens vertical aerial photographs.
Aerial photography - A. A. Department of Agriculture, 1940-41.
Polyconic Projection, North American Datum.

ROAD CLASSIFICATION 1943

| | | |
|---|--|---------------|
| Dependable hard surface, all-weather road | Loam-surface graded, dry weather road | U. S. Route |
| Secondary hard surface, all-weather road | Dirt road | State Route |
| More than two lanes indicated by note along road with tick at point of change | | 3 LANE 4 LANE |

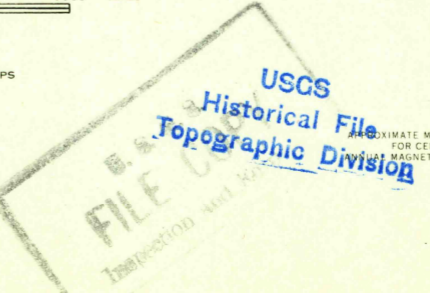
Scale 1:62,500



CONTOUR INTERVAL 20 FEET
DATUM IS MEAN SEA LEVEL

FIVE THOUSAND YARD GRID COMPUTED FROM "GRID SYSTEM FOR PROGRESSIVE MAPS
IN THE U. S. ZONE B, U. S. C. & G. S. SPECIAL PUBLICATION NO. 59"
THE LAST THREE DIGITS OF THE GRID NUMBERS ARE OMITTED
MICHIGAN STATE GRID ZONE EAST IS INDICATED BY DOTTED TICKS
OUTSIDE THE NEAT LINE AT 10,000 FOOT INTERVALS
NOTE: OFFICERS USING THIS MAP WILL MAKE NECESSARY CORRECTIONS AND ADDITIONS WHICH COME
FROM THEIR ATTENTION AND WILL DIRECT TO THE CHIEF OF ENGINEERS, WASHINGTON, D. C.

4/44 SX
Use diagram only to obtain numerical values.
To determine magnetic north line, connect the
pivot point "P" on the south edge of the map
with the value of the angle between GRID
NORTH and MAGNETIC NORTH, as plotted on
the degree scale of the north edge of the map.



BURT, MICHIGAN
N4300-W8345/15

(HOLLY)