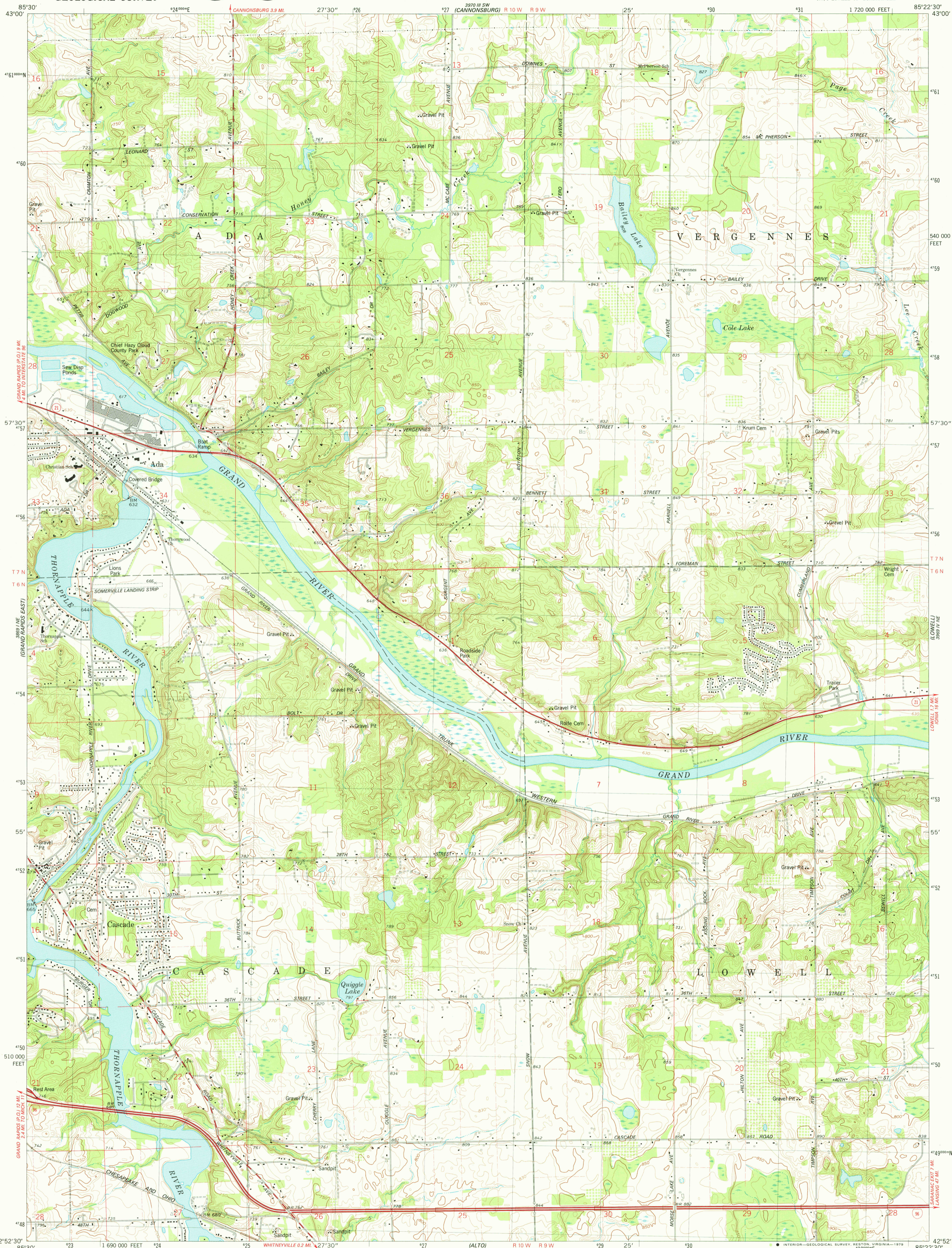




3899 1/2 SE (SMPRAV)



Mapped, edited, and published by the Geological Survey

Control by USGS and NOS/NOAA

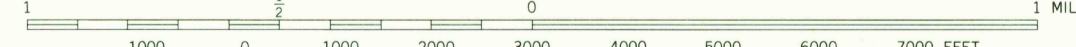
Topography by photogrammetric methods from aerial photographs taken 1974. Field checked 1975. Map edited 1978

Projection and 10,000-foot grid ticks: Michigan coordinate system, south zone (Lambert conformal conic)

1000-meter Universal Transverse Mercator grid, zone 16 1927 North American datum

Fine red dashed lines indicate selected fence and field lines where generally visible on aerial photographs. This information is unchecked

SCALE 1:24 000



CONTOUR INTERVAL 10 FEET
NATIONAL GEODETIC VERTICAL DATUM OF 1929

THIS MAP COMPLIES WITH NATIONAL MAP ACCURACY STANDARDS
FOR SALE BY U.S. GEOLOGICAL SURVEY, RESTON, VIRGINIA 22092
AND BY THE GEOLOGICAL SURVEY DIVISION
MICHIGAN DEPARTMENT OF NATURAL RESOURCES, LANSING, MICHIGAN 48909
A FOLDER DESCRIBING TOPOGRAPHIC MAPS AND SYMBOLS IS AVAILABLE ON REQUEST

ROAD CLASSIFICATION

Primary highway, hard surface
Secondary highway, hard surface
Unimproved road
Interstate Route
U. S. Route
State Route

Light-duty road, hard or improved surface
Unimproved road
Interstate Route
U. S. Route
State Route

USGS Historical File Topographic Division

CASCADE, MICH.
NW4 LOWELL 15' QUADRANGLE
N4252.5—W8522.5/7.5

1978

AMS 3969 IV NW—SERIES V862

MAY 0 1 1979

2800