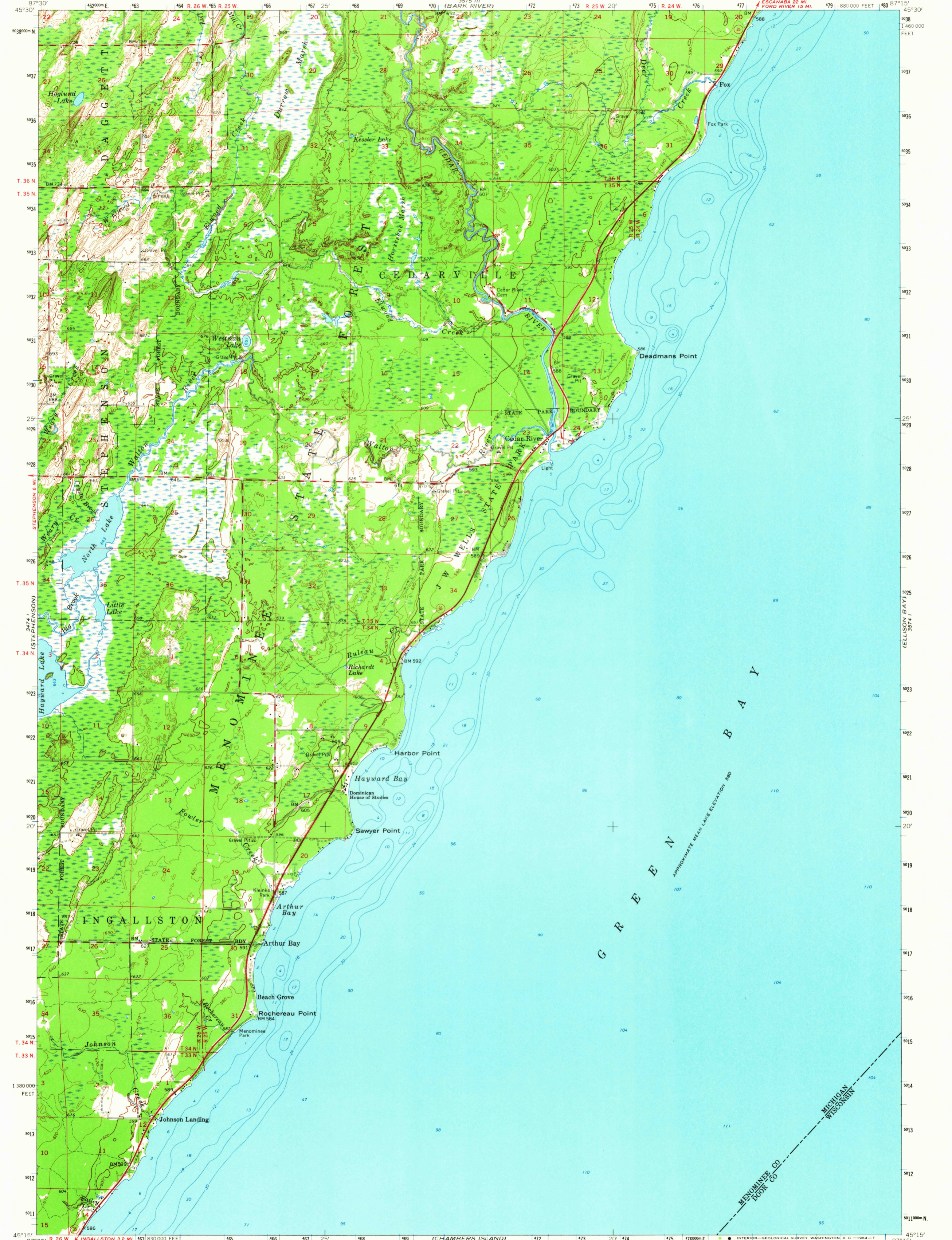
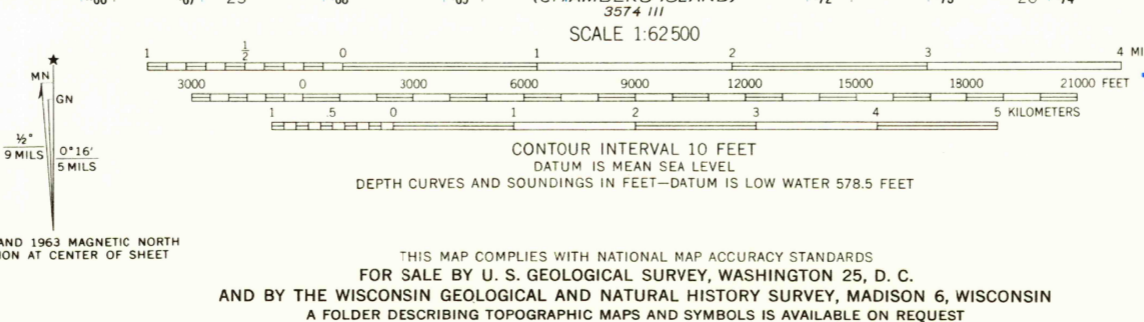


UNITED STATES
DEPARTMENT OF THE INTERIOR
GEOLOGICAL SURVEY

CEDAR RIVER QUADRANGLE
MICHIGAN-WISCONSIN
15 MINUTE SERIES (TOPOGRAPHIC)



Mapped, edited, and published by the Geological Survey
Control by USGS, USC&GS, and U. S. Lake Survey
Topography by photogrammetric methods from aerial
photographs taken 1954. Field checked 1963
Selected hydrographic data compiled from U. S. Lake Survey
Chart 702 (1960). This information is not intended for
navigational purposes
Polyconic projection. 1927 North American datum
10,000-foot grid based on Michigan coordinate system,
west zone
1000-meter Universal Transverse Mercator grid ticks,
zone 16, shown in blue



USGS
Historical File
Topographic Division

ROAD CLASSIFICATION
Light-duty
Medium-duty
Unimproved dirt
State Route

QUADRANGLE LOCATION
MICHIGAN
WISCONSIN

CEDAR RIVER, MICH.—WIS.
N4515—W8715/15
1963
AMS 3574 IV—SERIES V762

AUG 4 1964
3100