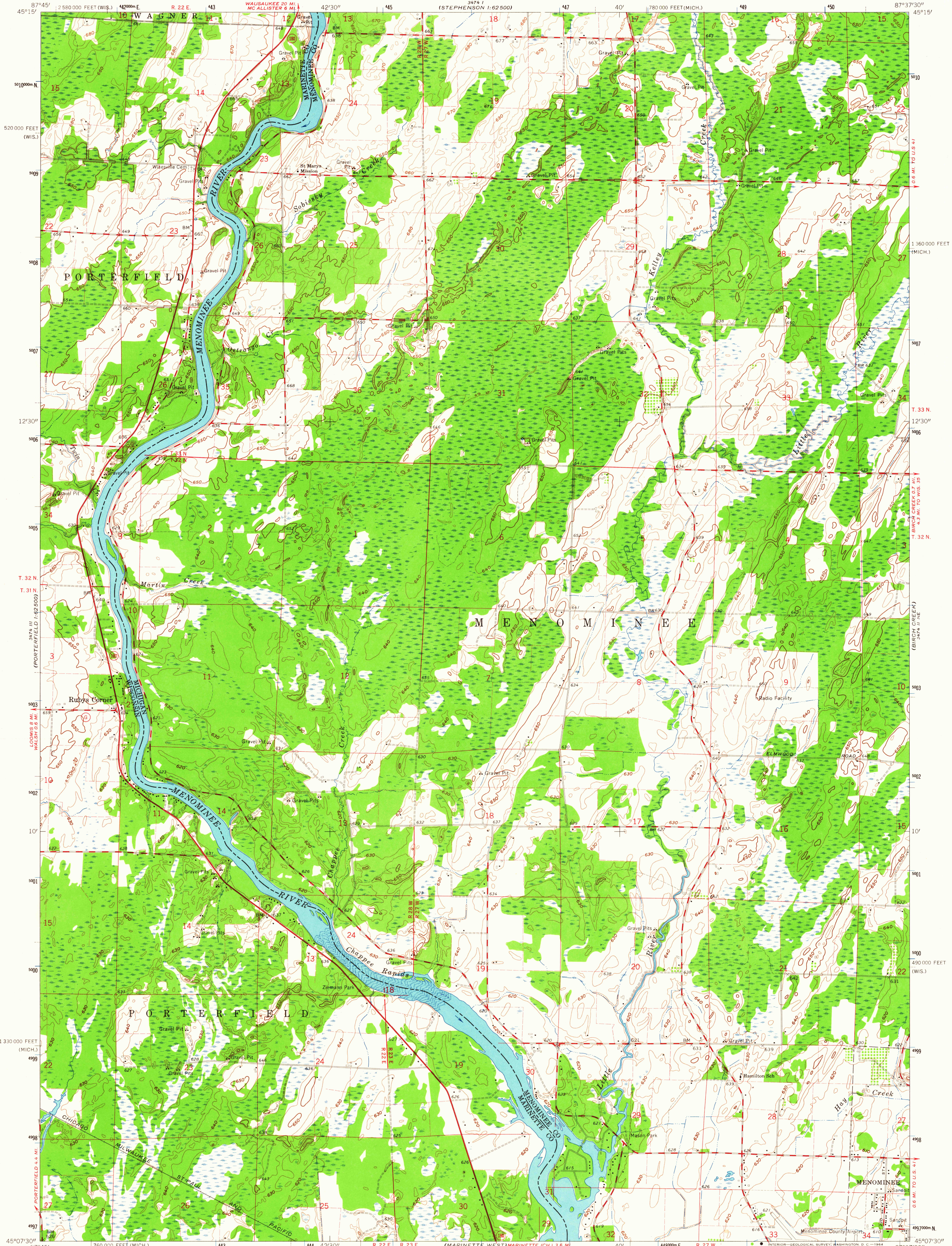


3474 I
(STEPHENSON)
1:62,500



Mapped, edited, and published by the Geological Survey

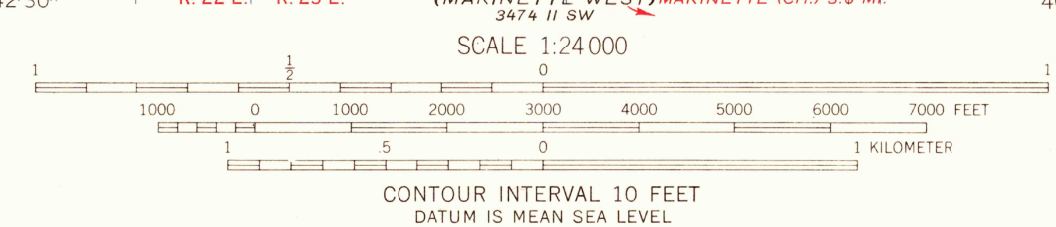
Control by USGS and USC&GS

Topography by photogrammetric methods from aerial photographs taken 1954-55. Field checked 1963

Polyconic projection. 1927 North American datum 10,000-foot grids based on Michigan coordinate system, west zone and Wisconsin coordinate system, central zone 1000-meter Universal Transverse Mercator grid ticks, zone 16, shown in blue

Fine red dashed lines indicate selected fence and field lines where generally visible on aerial photographs. This information is unchecked

UTM GRID AND 1963 MAGNETIC NORTH DECLINATION AT CENTER OF SHEET



CONTOUR INTERVAL 10 FEET
DATUM IS MEAN SEA LEVEL

USGS
Historical File
Topographic Division

ROAD CLASSIFICATION

Heavy-duty	Light-duty
Medium-duty	Unimproved dirt
State Route	



CHAPPEE RAPIDS, MICH.-WIS.
NW/4 MARINETTE 19 QUADRANGLE
N4507.5—W8737.5/7.5

1963

AMS 3474 II NW—SERIES V862

AUG 12 1964

RETURN TO:
NHD HISTORICAL MAP ARCHIVES
USGS NATIONAL CENTER, MS-522
RESTON, VA 22092

3045