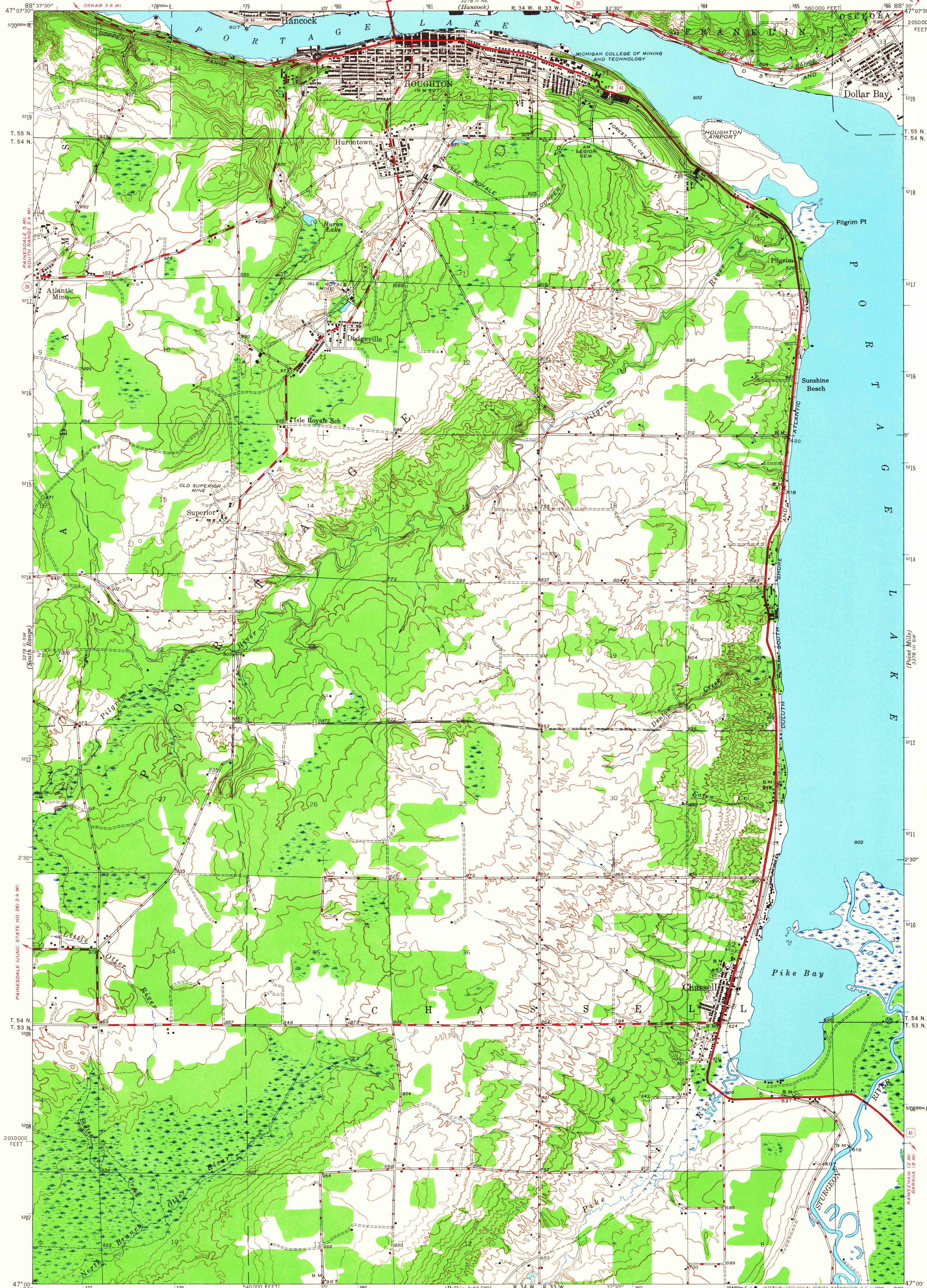


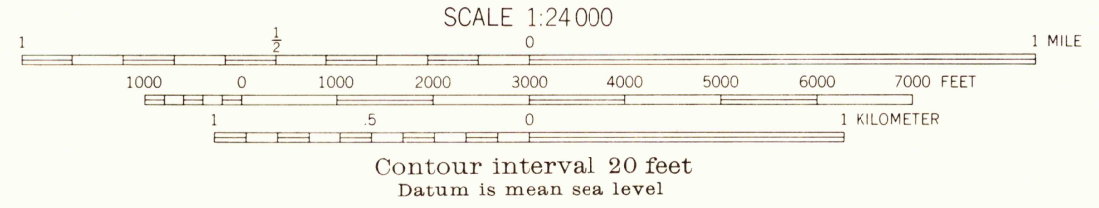
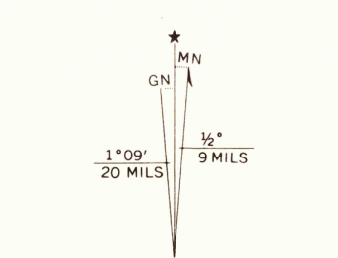
UNITED STATES
DEPARTMENT OF THE INTERIOR
GEOLOGICAL SURVEY

MICHIGAN
(HOUGHTON COUNTY)
CHASSELL QUADRANGLE
7 1/2-MINUTE SERIES



Mapped by the Geological Survey
1946

Road Classification
Dashed red line: Dry weather roads
Solid red line: U. S. Route
Dotted red line: Loose surface, graded
Dashed red line: Secondary road surface
Solid red line: All weather road
Dotted red line: Dirt road
Dashed red line: State Route
More than two lines indicated along road with tick at point of change



USGS
Historical File
Topographic Division

U.S.G.S.
FILE COPY
TOPOGRAPHIC DIVISION

Polyconic projection, 1927 North American datum
10000 foot grid based on Michigan West
rectangular coordinate system
1000-meter Universal Transverse Mercator grid ticks,
zone 16, shown in blue

U.S.G.S. CHASSELL, MICH.
1946
N4700-W8830/7.5
AMS 3278 II SE-SERIES V862

FOR SALE BY U.S. GEOLOGICAL SURVEY, WASHINGTON, D. C. 20242
A FOLDER DESCRIBING TOPOGRAPHIC MAPS AND SYMBOLS IS AVAILABLE ON REQUEST

3278 II SE
3278 II SE
3278 II SE

1615
1946