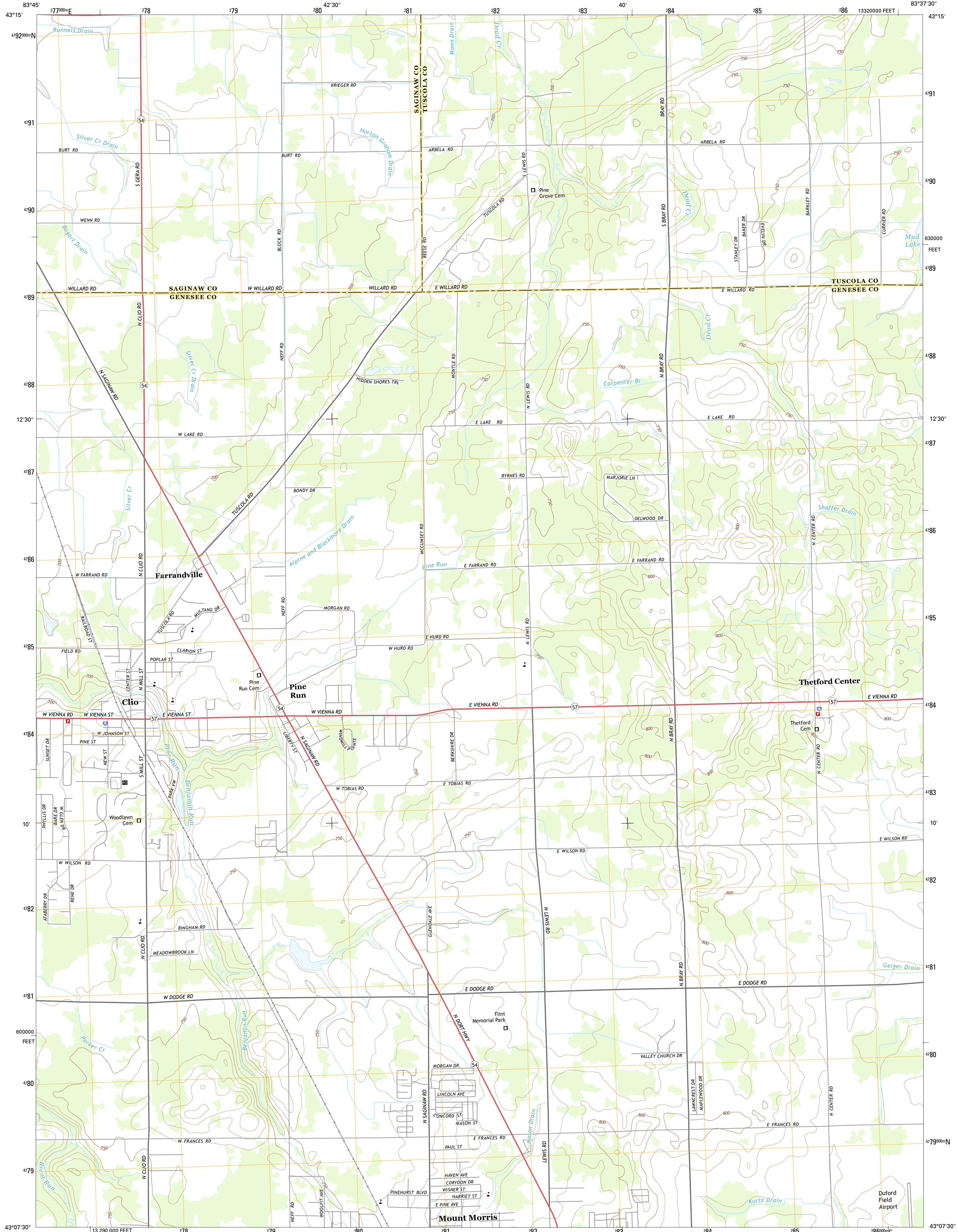




U.S. DEPARTMENT OF THE INTERIOR
U.S. GEOLOGICAL SURVEY



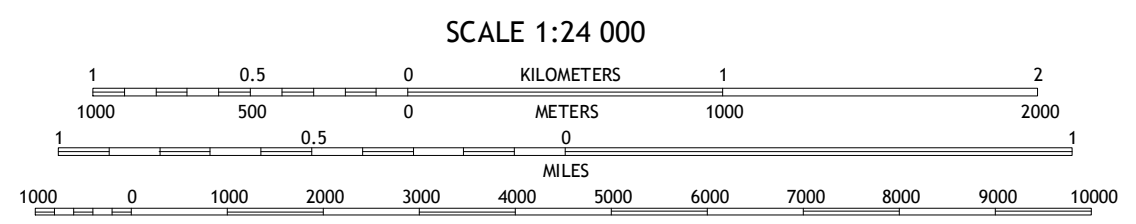
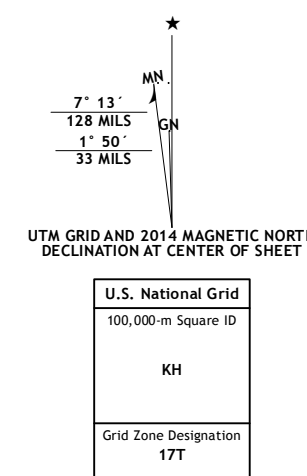
CLIO QUADRANGLE
MICHIGAN
7.5-MINUTE SERIES



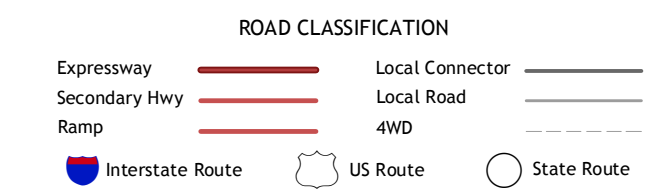
Produced by the United States Geological Survey
North American Datum of 1983 (NAD83)
World Geodetic System of 1984 (WGS84). Projection and
1 000-meter grid: Universal Transverse Mercator, Zone 17T
10 000-foot ticks: Michigan Coordinate System of 1983 (south
zone)

This map is not a legal document. Boundaries may be
generalized for this map scale. Private lands within government
reservations may not be shown. Obtain permission before
entering private lands.

Roads:.....NAIP, June 2012
HERE, 2013
Names:.....GNIS, 2013
Hydrography:.....National Hydrography Dataset, 2012
Contours:.....National Elevation Dataset, 1999
Boundaries:.....Multiple sources; see metadata file 1972-2013
Public Land Survey System:.....BLM, 2011



CONTOUR INTERVAL 10 FEET
NORTH AMERICAN VERTICAL DATUM OF 1988
This map was produced to conform with the
National Geospatial Program US Topo Product Standard, 2011.
A metadata file associated with this product is draft version 0.6.16



1	2	3
4	5	6
7	8	

ADJOINING QUADRANGLES

1 Birch Run North
2 Frankenth
3 Vassar
4 Birch Run South
5 Otsville
6 Flushing
7 Flint North
8 Davison



CLIO, MI
2014