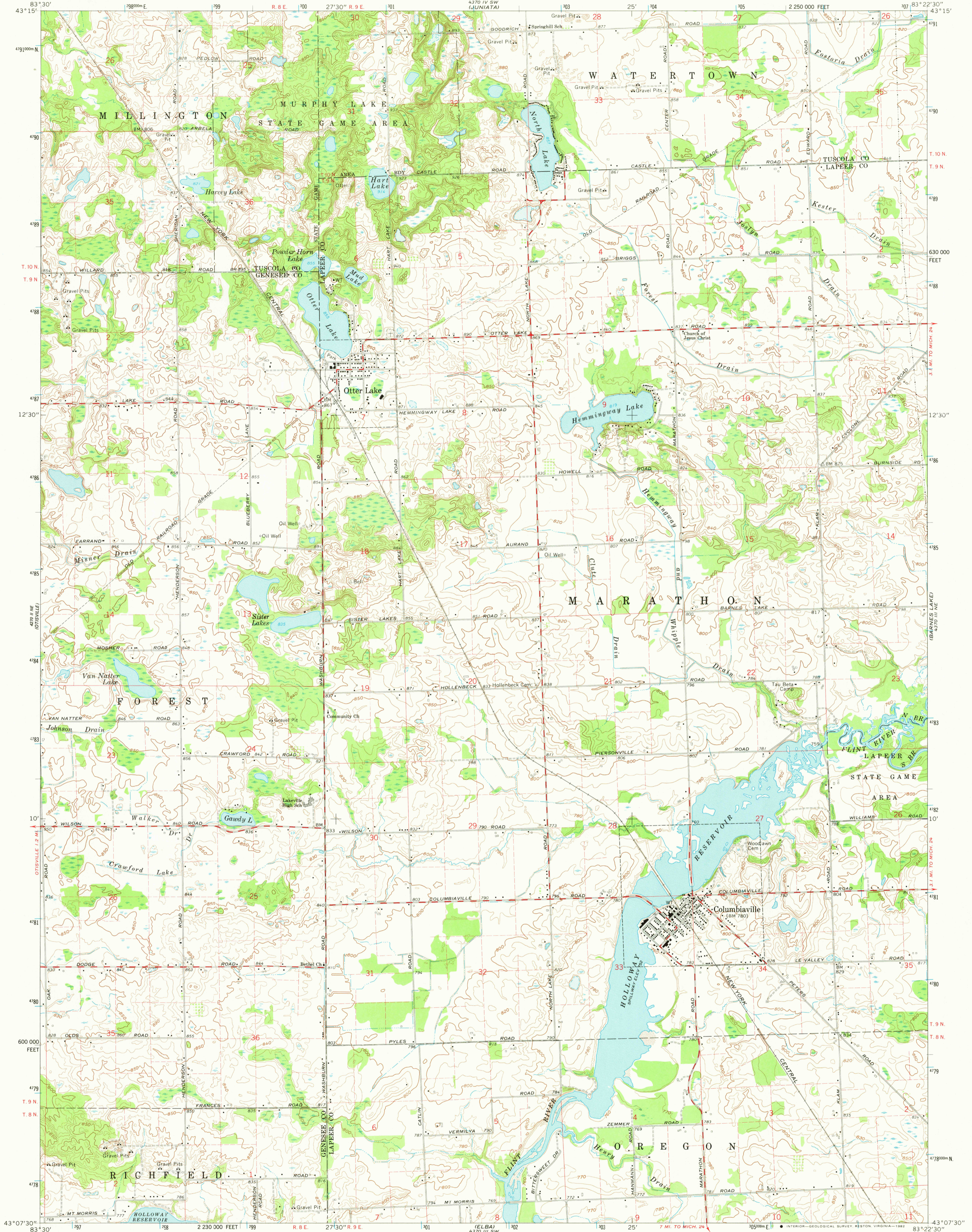
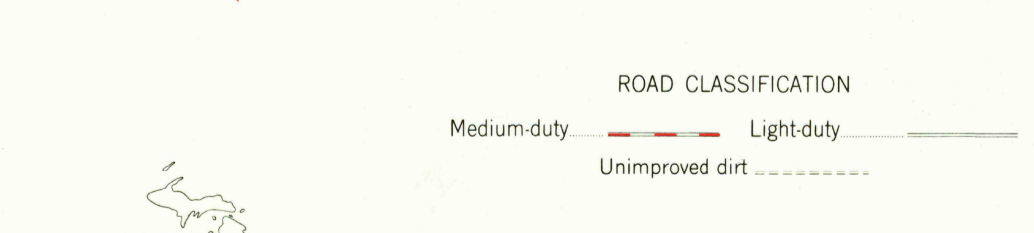
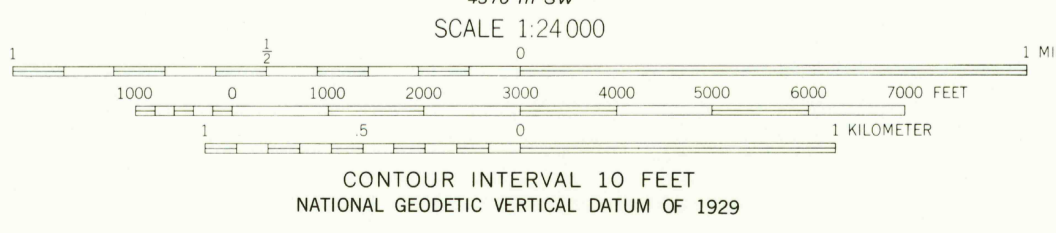
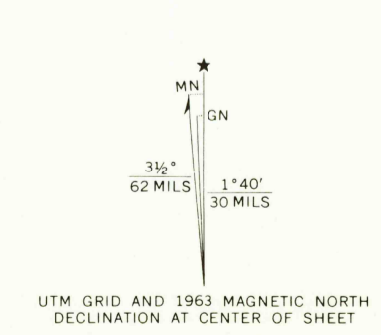


43° 15' N
83° 30' W

43° 15' N
83° 15' W



Mapped, edited, and published by the Geological Survey
Control by USGS and USC&GS
Topography by photogrammetric methods from aerial
photographs taken 1958-59. Field checked 1963
Polyconic projection. 1927 North American Datum
10,000-foot grid based on Michigan coordinate system, south zone
1000-meter Universal Transverse Mercator grid ticks,
zone 17, shown in blue
To place on the predicted North American Datum 1983
move the projection lines 1 meter north and
6 meters west as shown by dashed corner ticks
Fine dashed lines indicate selected fence and field lines where
generally visible on aerial photographs. This information is unchecked
Map photinspected 1978
No major culture or drainage changes observed



THIS MAP COMPLIES WITH NATIONAL MAP ACCURACY STANDARDS
FOR SALE BY U. S. GEOLOGICAL SURVEY, RESTON, VIRGINIA 22092
AND BY THE GEOLOGICAL SURVEY DIVISION
MICHIGAN DEPARTMENT OF NATURAL RESOURCES, LANSING, MICHIGAN 48909
A FOLDER DESCRIBING TOPOGRAPHIC MAPS AND SYMBOLS IS AVAILABLE ON REQUEST

COLUMBIAVILLE, MICH.
N4307.5-W8322.5/7.5
1963
PHOTOINSPECTED 1978
AMS 4370 III NW-SERIES V862

1963
DEPT 1982