

Advance sheet
Subject to correction

DEPARTMENT OF THE INTERIOR
U. S. GEOLOGICAL SURVEY

(Steuben SW) 86° 22' 30" 46° 00'

(Steuben SE) 17' 30"

86° 15' 46° 00'

(Manistique River SW)

T 42 N
T 41 N

T 42 N
T 41 N

57' 30"

57' 30"

45° 52' 30" 86° 22' 30"

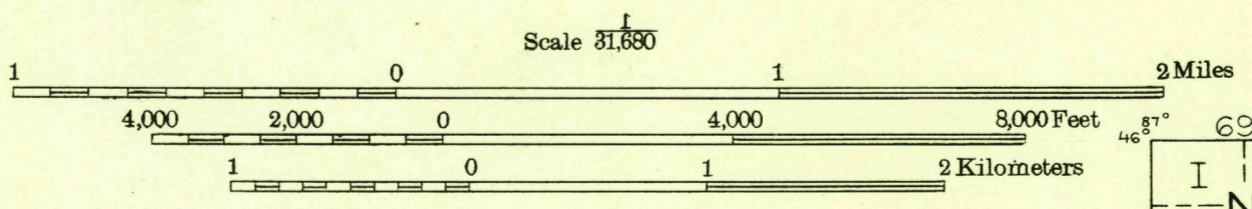
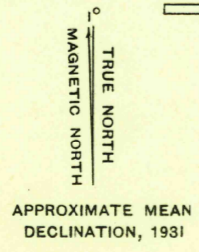
R. 17 W. 20' R. 16 W.

17' 30"

45° 52' 30" 86° 15'

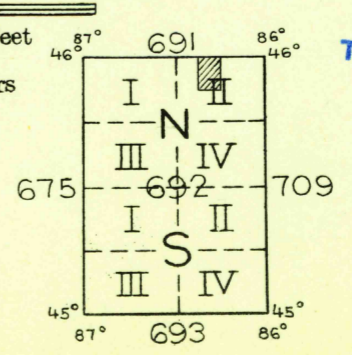


Glenn S. Smith, Division Engineer
Compiled in part from aerial photographs
taken by Air Corps, U. S. Army
Control by U. S. Geological Survey
Surveyed in 1931



Polyconic projection. North American datum

USGS
Historical File
Topographic Division



COOKS, MICH.
NE QUARTER