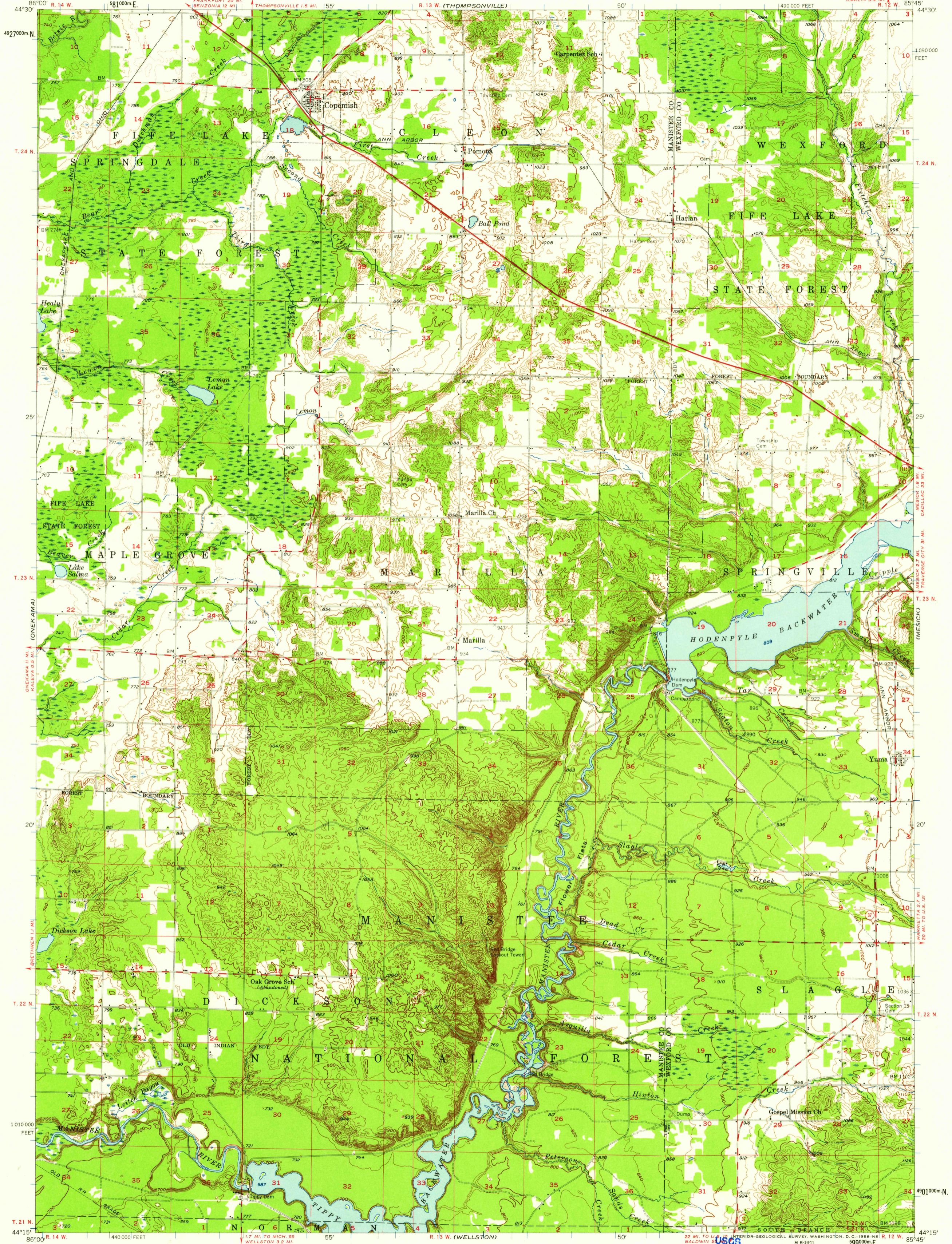
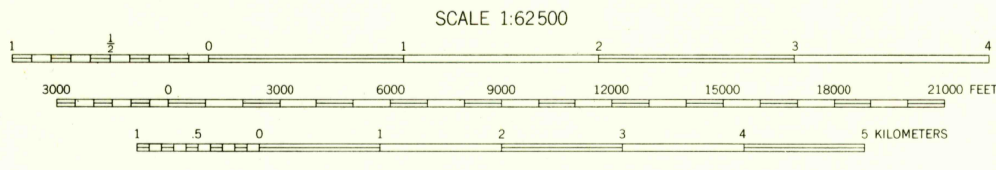


UNITED STATES
DEPARTMENT OF THE INTERIOR
GEOLOGICAL SURVEY

COPEMISH QUADRANGLE
MICHIGAN
15 MINUTE SERIES (TOPOGRAPHIC)



Mapped, edited, and published by the Geological Survey
Control by USGS and-USC&GS
Topography from aerial photographs by photogrammetric methods
and by planetable surveys 1957. Aerial photographs taken 1954
Polyconic projection. 1927 North American datum
10,000-foot grid based on Michigan coordinate system, central zone
1000-meter Universal Transverse Mercator grid ticks,
zone 16, shown in blue



CONTOUR INTERVAL 20 FEET
DOTTED LINES REPRESENT 10-FOOT CONTOURS
DATUM IS MEAN SEA LEVEL

USGS
Historical File
Topographic Division

ROAD CLASSIFICATION	
—	Light-duty
—	Medium-duty
—	Unimproved dirt
○	State Route



COPEMISH, MICH.
N4415-W8545/15

U.S.G.S.
FILE COPY
TOPOGRAPHIC DIVISION

1957

OCT 20 1958
1910