

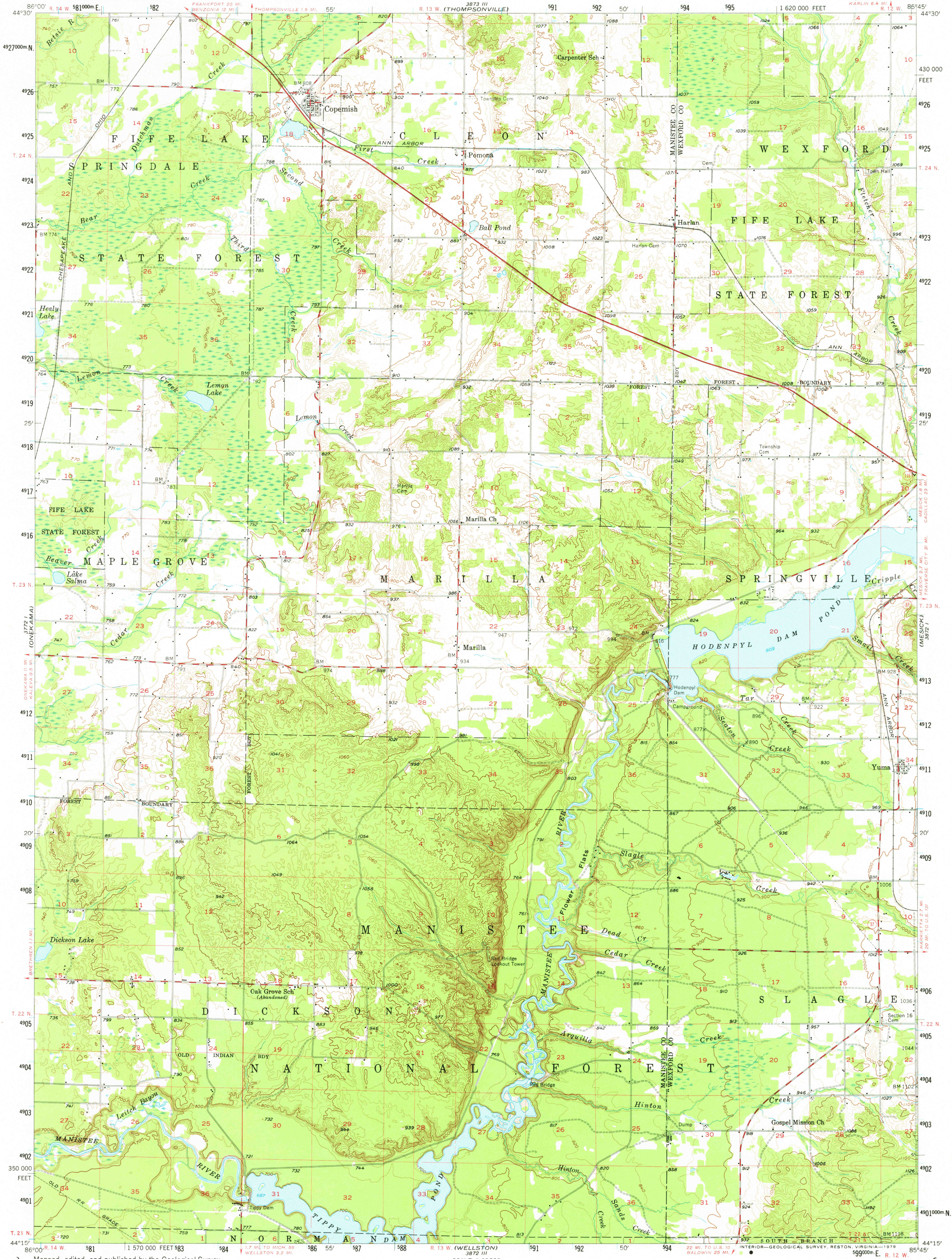
372.0 (FRANKFORT)

UNITED STATES DEPARTMENT OF THE INTERIOR GEOLOGICAL SURVEY



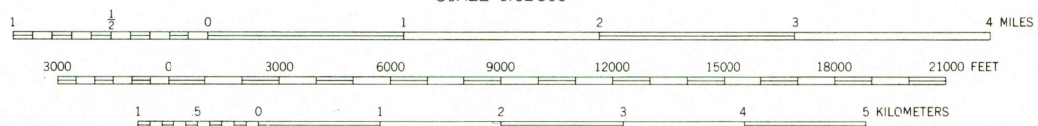
COPEMISH QUADRANGLE MICHIGAN 15 MINUTE SERIES (TOPOGRAPHIC)

387.0 (KINGSBLEY)



Mapped, edited, and published by the Geological Survey

Control by USGS and USC&GS. Topography from aerial photographs by photogrammetric methods and by planetable surveys 1957. Aerial photographs taken 1954. Polyconic projection. 1927 North American datum. 10,000-foot grid based on Michigan coordinate system, central zone 1000-meter Universal Transverse Mercator grid ticks, zone 16, shown in blue. There may be private inholdings within the boundaries of the National or State reservations shown on this map.



CONTOUR INTERVAL 20 FEET. DOTTED LINES REPRESENT 10-FOOT CONTOURS. NATIONAL GEODETIC VERTICAL DATUM OF 1929.

THIS MAP COMPLIES WITH NATIONAL MAP ACCURACY STANDARDS FOR SALE BY U.S. GEOLOGICAL SURVEY, RESTON, VIRGINIA 22092 AND BY THE GEOLOGICAL SURVEY DIVISION, MICHIGAN DEPARTMENT OF NATURAL RESOURCES, LANSING, MICHIGAN 48909. A FOLDER DESCRIBING TOPOGRAPHIC MAPS AND SYMBOLS IS AVAILABLE ON REQUEST.

ROAD CLASSIFICATION: Heavy-duty, Light-duty, Medium-duty, Unimproved dirt, State Route.



USGS Historical File Topographic Division

COPEMISH, MICH. N4415-W8545/15 1957 AMS 3872 IV-SERIES V762

MAY 14 1979

3000