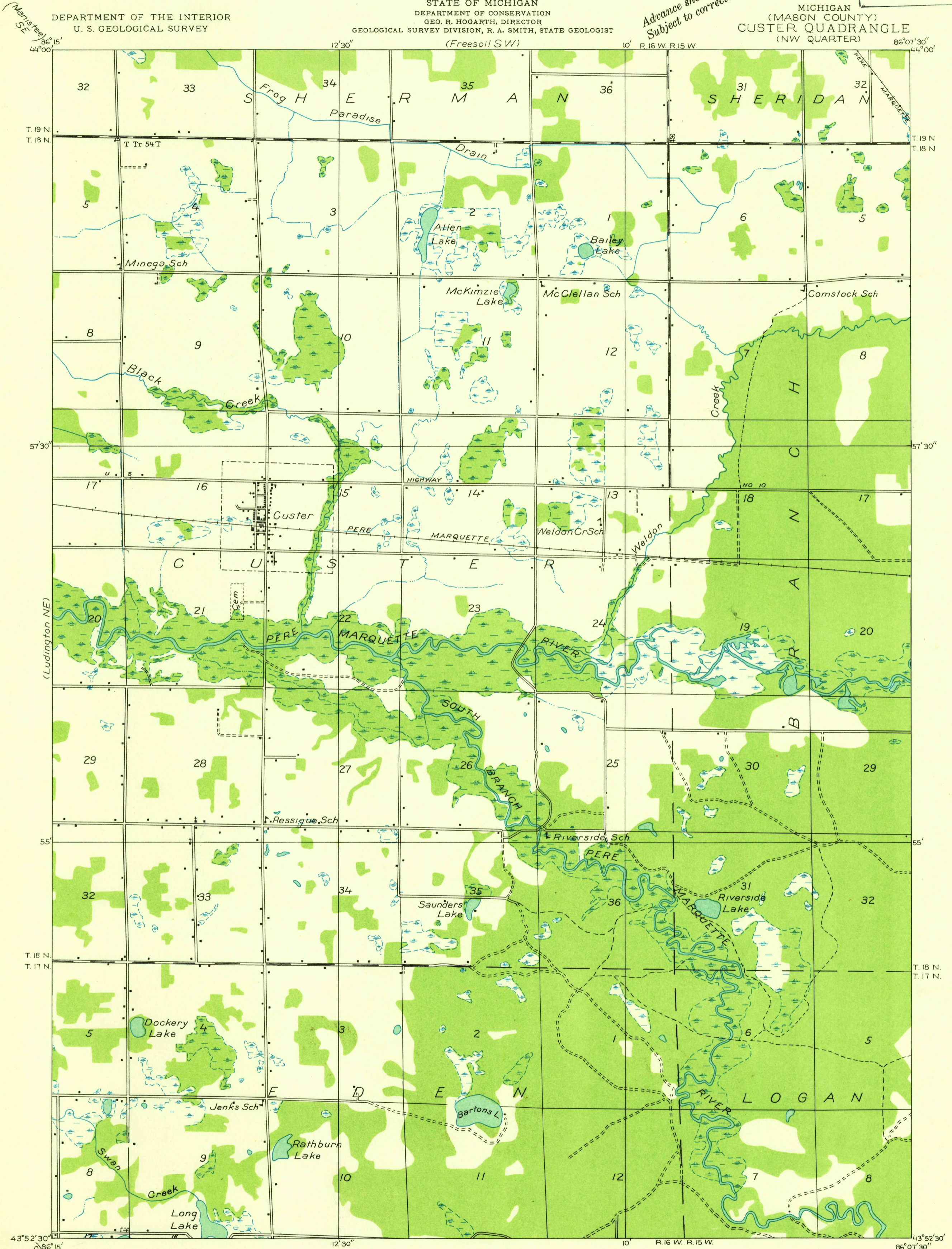


DEPARTMENT OF THE INTERIOR
U. S. GEOLOGICAL SURVEY

STATE OF MICHIGAN
DEPARTMENT OF CONSERVATION
GEO. R. HOGARTH, DIRECTOR
GEOLOGICAL SURVEY DIVISION, R. A. SMITH, STATE GEOLOGIST

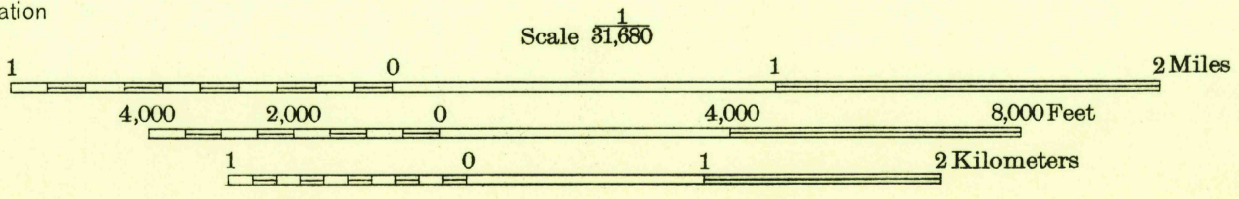
MICHIGAN
(MASON COUNTY)
CUSTER QUADRANGLE
(NW QUARTER)

Advance sheet.
Subject to correction.



Glenn S. Smith, Division Engineer
Compiled by U. S. Geological Survey after field examination
of aerial photographs taken by Air Corps, U. S. Army
Control by U. S. Geological Survey
Field examination in 1931

Polyconic projection. North American datum



USGS
Historical File
Topographic Division

TRUE NORTH
MAGNETIC NORTH
APPROXIMATE MEAN
DECLINATION, 1931

CUSTER, MICH.
(NW)