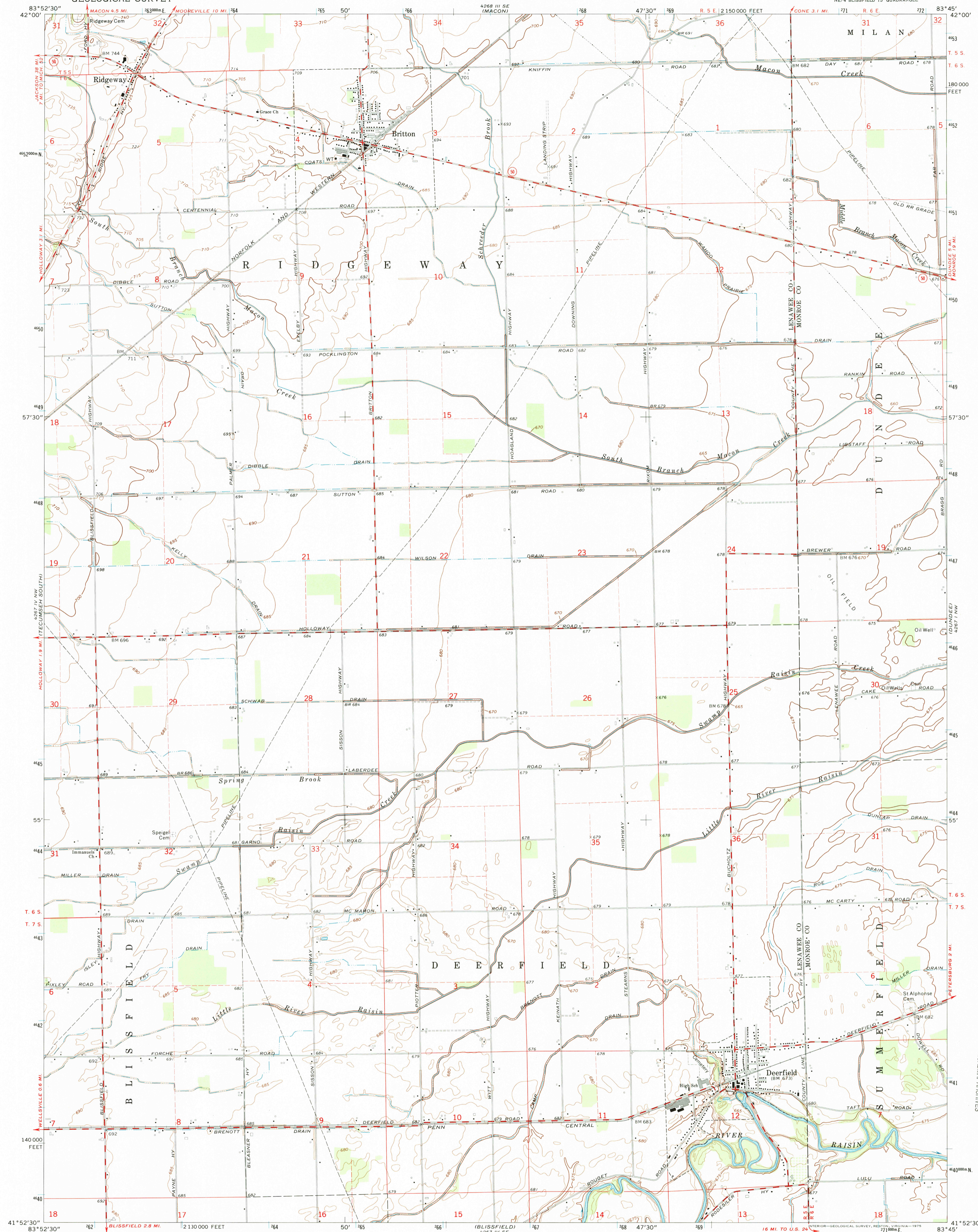


UNITED STATES
DEPARTMENT OF THE INTERIOR
GEOLOGICAL SURVEY

DEERFIELD QUADRANGLE
MICHIGAN
7.5 MINUTE SERIES (TOPOGRAPHIC)
NE/4 BLISSFIELD 15' QUADRANGLE



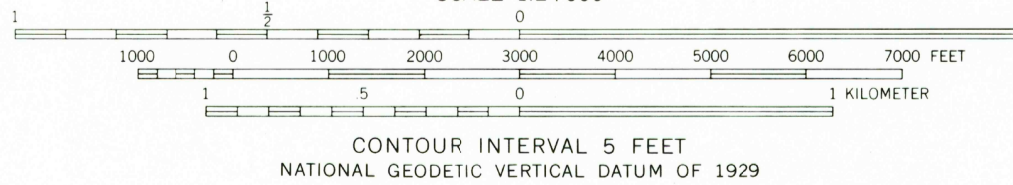
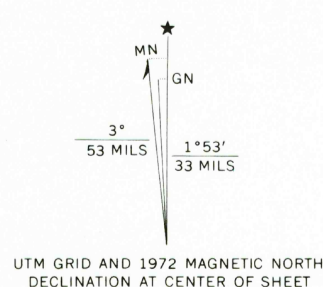
Mapped, edited, and published by the Geological Survey

Control by USGS and USC&GS

Topography by photogrammetric methods from aerial photographs taken 1971. Field checked 1972

Projection and 10,000-foot grid ticks: Michigan coordinate system, south zone (Lambert conformal conic)
1000-meter Universal Transverse Mercator grid ticks, zone 17, shown in blue. 1927 North American datum

Fine red dashed lines indicate selected fences and field lines where generally visible on aerial photographs. This information is unchecked



ROAD CLASSIFICATION

- Primary highway, hard surface
- Secondary highway, hard surface
- Unimproved road
- Light-duty road, hard or improved surface
- Interstate Route
- U.S. Route
- State Route

DEERFIELD, MICH.
NE/4 BLISSFIELD 15' QUADRANGLE
N4152.5—W8345/7.5

1972

AMS 4267 IV NE—SERIES V862

THIS MAP COMPLIES WITH NATIONAL MAP ACCURACY STANDARDS
FOR SALE BY U.S. GEOLOGICAL SURVEY, RESTON, VIRGINIA 22092
A FOLDER DESCRIBING TOPOGRAPHIC MAPS AND SYMBOLS IS AVAILABLE ON REQUEST

HISTORICAL MAP ARCHIVES

OCT 3 1 1999

RECEIVED

1-889-2-09-D-N831