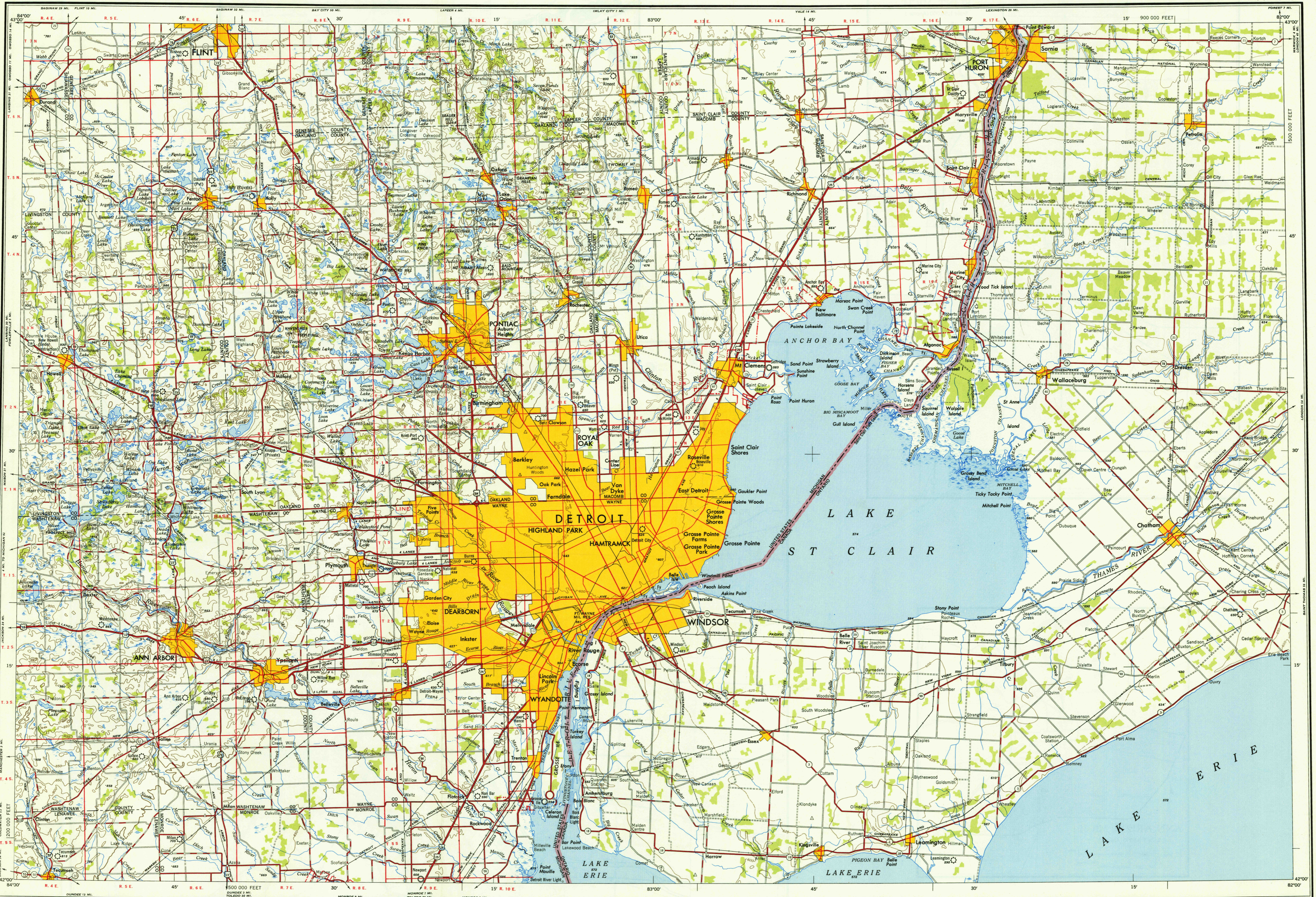


FILE COPY
Inoperative and Edible



AMS V501 PRINTED BY ARMY MAP SERVICE, CORPS OF ENGINEERS, 1-54 757595

Prepared by the Army Map Service (AM), Corps of Engineers, U. S. Army, Washington, D. C. Compiled in 1949 from United States Quadrangles, 1:24,000, 1:31,680 and 1:62,500, U. S. Geological Survey and Corps of Engineers, 1902-1944; Canada, 1:63,360, Department of National Defense, 1909-1941; U. S. Lake Survey Charts, Chart Numbers 41, 42, 43, 1945; 51, 1946; County Highway Maps, 1940; and intelligence data to 1946. Planimetric detail partially revised by photo-planimetric methods. Aerial photography, 1940-1944. Road, railroad and aeronautical data verified by state authorities and Canadian Department of National Defense, 1952. Control by U. S. Geological Survey, U. S. Coast and Geodetic Survey.

LEGEND

ROAD DATA 1952

- Hard surface, heavy duty road, more than two lanes wide
- Hard surface, heavy duty road, two lanes wide
- Hard surface, medium duty road, two lanes wide
- Hard surface, medium duty road, two lanes wide
- Loose surface, graded and drained road
- Gravel road
- Stonewall
- Route markers: Federal; State

RAILROADS

- Standard gauge
- Narrow gauge
- International boundary
- State boundary
- County boundary
- Park and reservation

POPULATED PLACES

- 500,000 or over
- 100,000 to 500,000
- 25,000 to 100,000
- 5,000 to 25,000
- 1,000 to 5,000
- 1,000 or less

Spot elevation in feet

- Military airfield
- Municipal or commercial airfield
- Auxiliary airfield
- Seaplane base
- Seaplane anchorage
- Woodland
- Intermittent stream
- Swamp, marsh
- Reef; Limit of danger line
- Rocks wash; Wharf, pier
- Foreshore flats

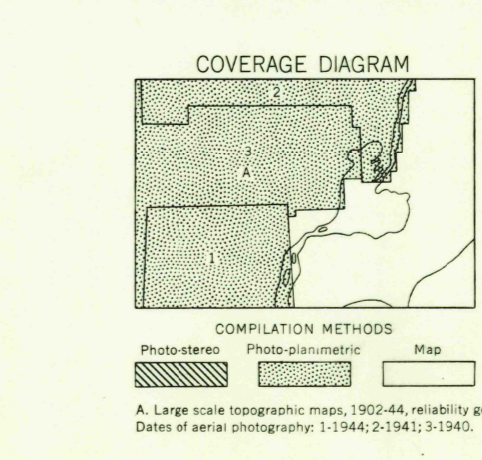
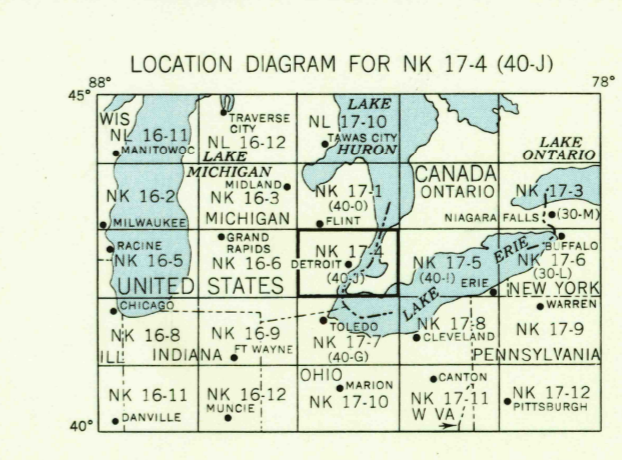
Scale 1:250,000

CONTOUR INTERVAL 50 FEET
WITH SUPPLEMENTARY CONTOURS AT 25 FOOT INTERVALS

TRANSVERSE MERCATOR PROJECTION
1887 NORTH AMERICAN DATUM
100,000-FOOT GRID BASED ON MICHIGAN COORDINATE SYSTEM, EAST ZONE

1962 MAGNETIC DECLINATION FOR THIS SHEET VARIES FROM 2°30' WESTERLY FOR THE CENTER OF THE WEST EDGE TO 2°10' WESTERLY FOR THE CENTER OF THE EAST EDGE. MEAN ANNUAL CHANGE 0°07' EASTERLY.

FOR SALE BY U. S. GEOLOGICAL SURVEY, WASHINGTON 25, D. C.



SECTIONIZED TOWNSHIP

6	5	4	3	2	1
7	8	9	10	11	12
18	17	16	15	14	13
19	20	21	22	23	24
30	29	28	27	26	25
31	32	33	34	35	36

USGS Historical File
Topographic Division

DETROIT, UNITED STATES; CANADA
MICHIGAN; ONTARIO

FILE COPY
Inoperative and Edible