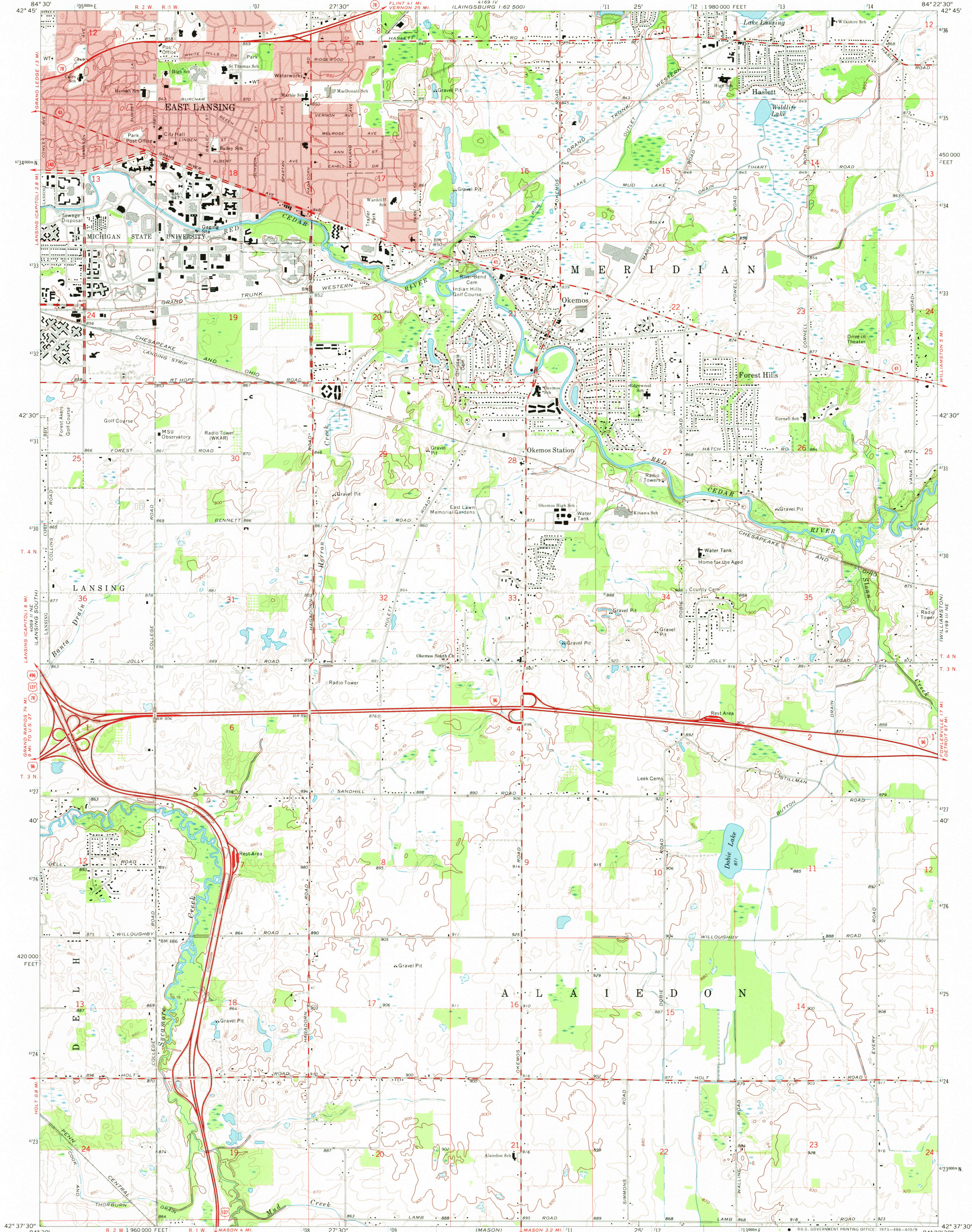
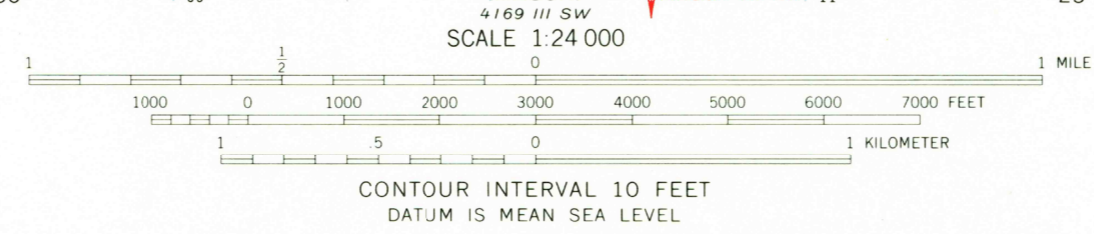
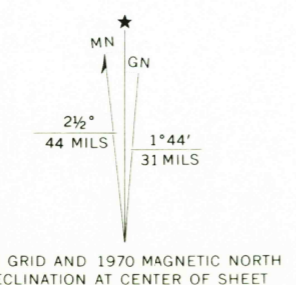


UNITED STATES
DEPARTMENT OF THE INTERIOR
GEOLOGICAL SURVEY

EAST LANSING QUADRANGLE
MICHIGAN-INGHAM CO.
7.5 MINUTE SERIES (TOPOGRAPHIC)
NW/4 MASON 15' QUADRANGLE



Mapped, edited, and published by the Geological Survey
Control by USGS and USC&GS
Topography by photogrammetric methods from aerial photographs taken 1967. Field checked 1970
Polyconic projection. 1927 North American datum 10,000-foot grid based on Michigan coordinate system, south zone 1000-meter Universal Transverse Mercator grid ticks, zone 16, shown in blue
Red tint indicates area in which only landmark buildings are shown
Fine red dashed lines indicate selected fence and field lines where generally visible on aerial photographs. This information is unchecked



ROAD CLASSIFICATION

Primary highway, hard surface	Light-duty road, hard or improved surface
Secondary highway, hard surface	Unimproved road
Interstate Route	U. S. Route
	State Route

THIS MAP COMPLIES WITH NATIONAL MAP ACCURACY STANDARDS
FOR SALE BY U. S. GEOLOGICAL SURVEY, WASHINGTON, D. C. 20242
A FOLDER DESCRIBING TOPOGRAPHIC MAPS AND SYMBOLS IS AVAILABLE ON REQUEST

EAST LANSING, MICH.
NW/4 MASON 15' QUADRANGLE
N4237.5-W8422.5/7.5

1970
AMS 4169 III NW-SERIES V862

Handwritten notes:
4169 III NW
8500