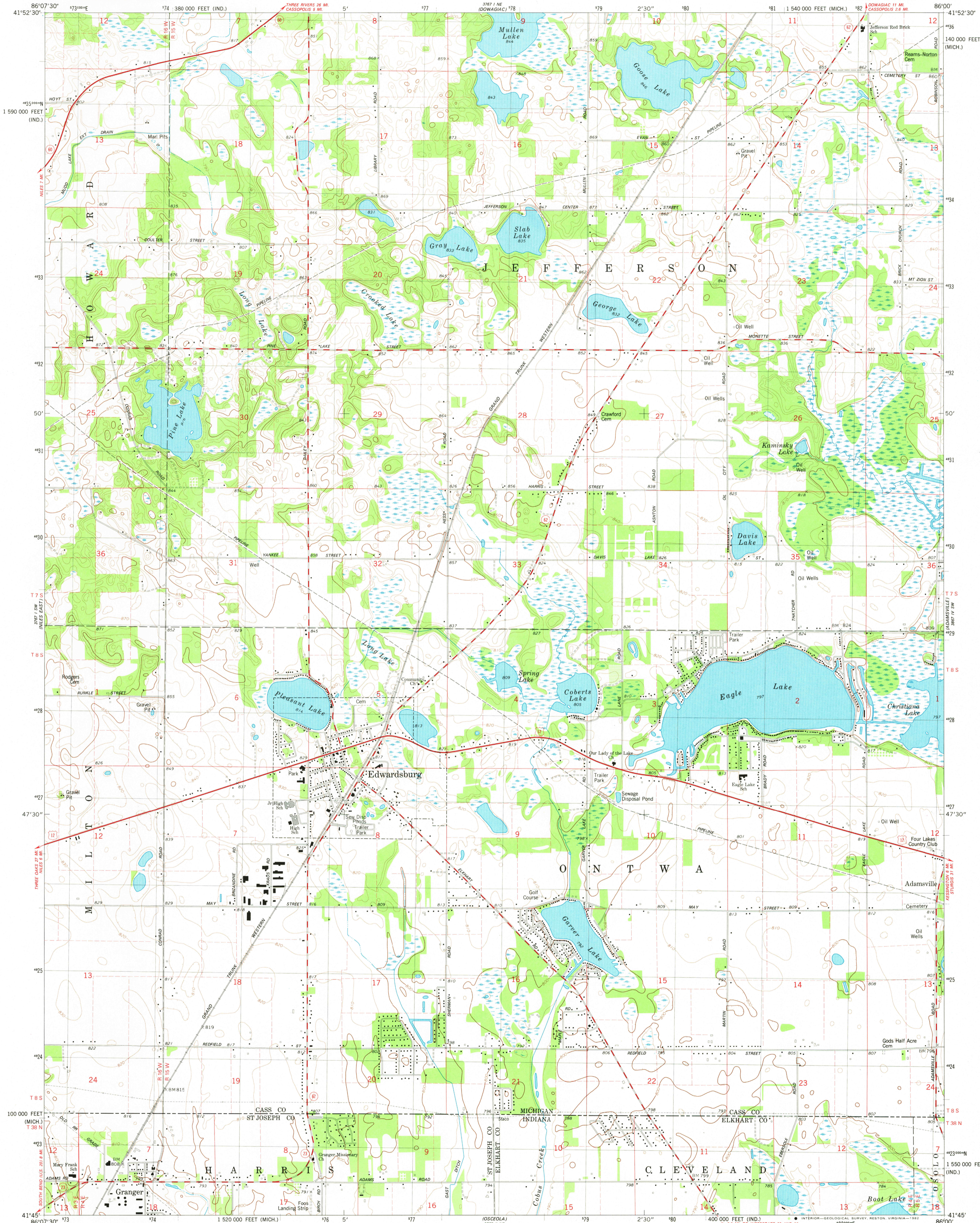
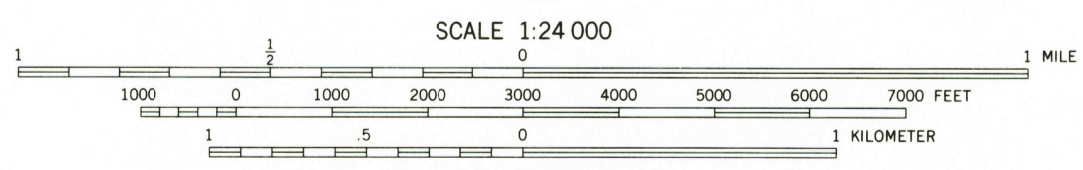
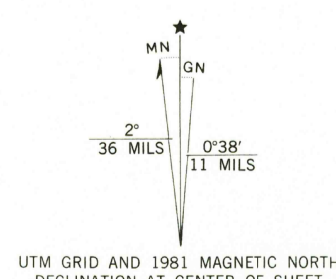


UNITED STATES
DEPARTMENT OF THE INTERIOR
GEOLOGICAL SURVEY

EDWARDSBURG QUADRANGLE
MICHIGAN-INDIANA
7.5 MINUTE SERIES (TOPOGRAPHIC)
SE/4 CASSOPOLIS 15' QUADRANGLE



Mapped, edited, and published by the Geological Survey
Control by USGS and NOS/NOAA
Topography by photogrammetric methods from aerial photographs taken 1975. Field checked 1977. Map edited 1981
Projection: Michigan coordinate system, south zone (Lambert conformal conic)
10,000-foot grid ticks based on Michigan coordinate system, south zone and Indiana coordinate system, east zone
1000-meter Universal Transverse Mercator grid, zone 16 1927 North American Datum
To place on the predicted North American Datum 1983 move the projection lines 2 meters east as shown by dashed corner ticks
Fine red dashed lines indicate selected fence and field lines where generally visible on aerial photographs. This information is unchecked



THIS MAP COMPLIES WITH NATIONAL MAP ACCURACY STANDARDS FOR SALE BY U.S. GEOLOGICAL SURVEY, RESTON, VIRGINIA 22092 AND BY THE GEOLOGICAL SURVEY DIVISION
MICHIGAN DEPARTMENT OF NATURAL RESOURCES, LANSING, MICHIGAN 48909 AND INDIANA DEPARTMENT OF NATURAL RESOURCES, INDIANAPOLIS, INDIANA 46204
A FOLDER DESCRIBING TOPOGRAPHIC MAPS AND SYMBOLS IS AVAILABLE ON REQUEST



ROAD CLASSIFICATION
Primary highway, hard surface
Secondary highway, hard surface
Interstate
U. S. Route
Light-duty road, hard or improved surface
Unimproved road
State Route

EDWARDSBURG, MICH.-IND.
SE/4 CASSOPOLIS 15' QUADRANGLE
N4145-W8600/7.5

1981
DMA 3767 1 SE--SERIES V862

MAR 3 1982
RETURN TO:
USGS NATIONAL MAP ARCHIVES
RESTON, VA 22092