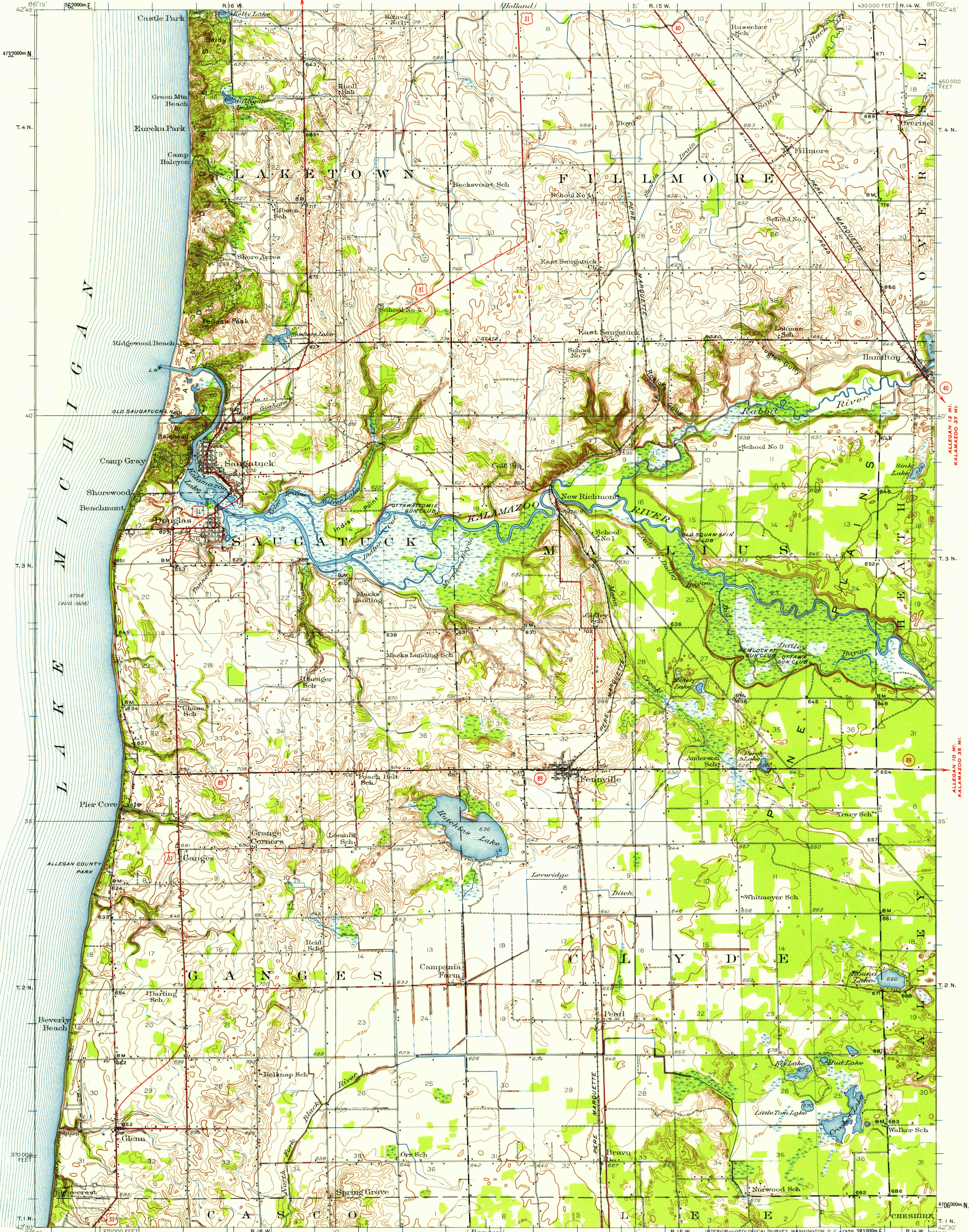


GRAND RAPIDS 33 MI.  
HOLLAND 5 MI.

GRAND HAVEN 28 MI.  
HOLLAND 4.1 MI.



Topography by W.B. Upton, Jr. and Kostka Mudd  
Culture and drainage in part compiled from aerial photographs  
taken by Air Corps, U.S. Army  
Surveyed in 1928

SCALE 1:62,500  
USGS  
Historical File  
Topographic Division

Polyconic projection, 1927 North American datum  
10,000-foot grid based on Michigan (Central)  
rectangular coordinate system  
1000-meter Universal Transverse Mercator grid ticks,  
zone 16, shown in blue

APPROXIMATE MEAN DECLINATION, 1928  
TRUE NORTH  
MAGNETIC NORTH  
CONTOUR INTERVAL 10 FEET  
(CONTOUR INTERVAL IN SAND DUNES AREA 20 FEET)  
DATUM IS MEAN SEA LEVEL

ROAD CLASSIFICATION  
Heavy-duty — 4 LANE 16 LANE Light-duty —  
Medium-duty — 4 LANE 16 LANE Unimproved dirt —  
U.S. Route State Route

FENNVILLE, MICH.  
N 4230-W 8600/15  
1928

FOR SALE BY U. S. GEOLOGICAL SURVEY, WASHINGTON 25, D. C.  
A FOLDER DESCRIBING TOPOGRAPHIC MAPS AND SYMBOLS IS AVAILABLE ON REQUEST

U.S.G.S.  
FILE COPY  
TOPOGRAPHIC DIVISION

MAR - 6 1958

4920