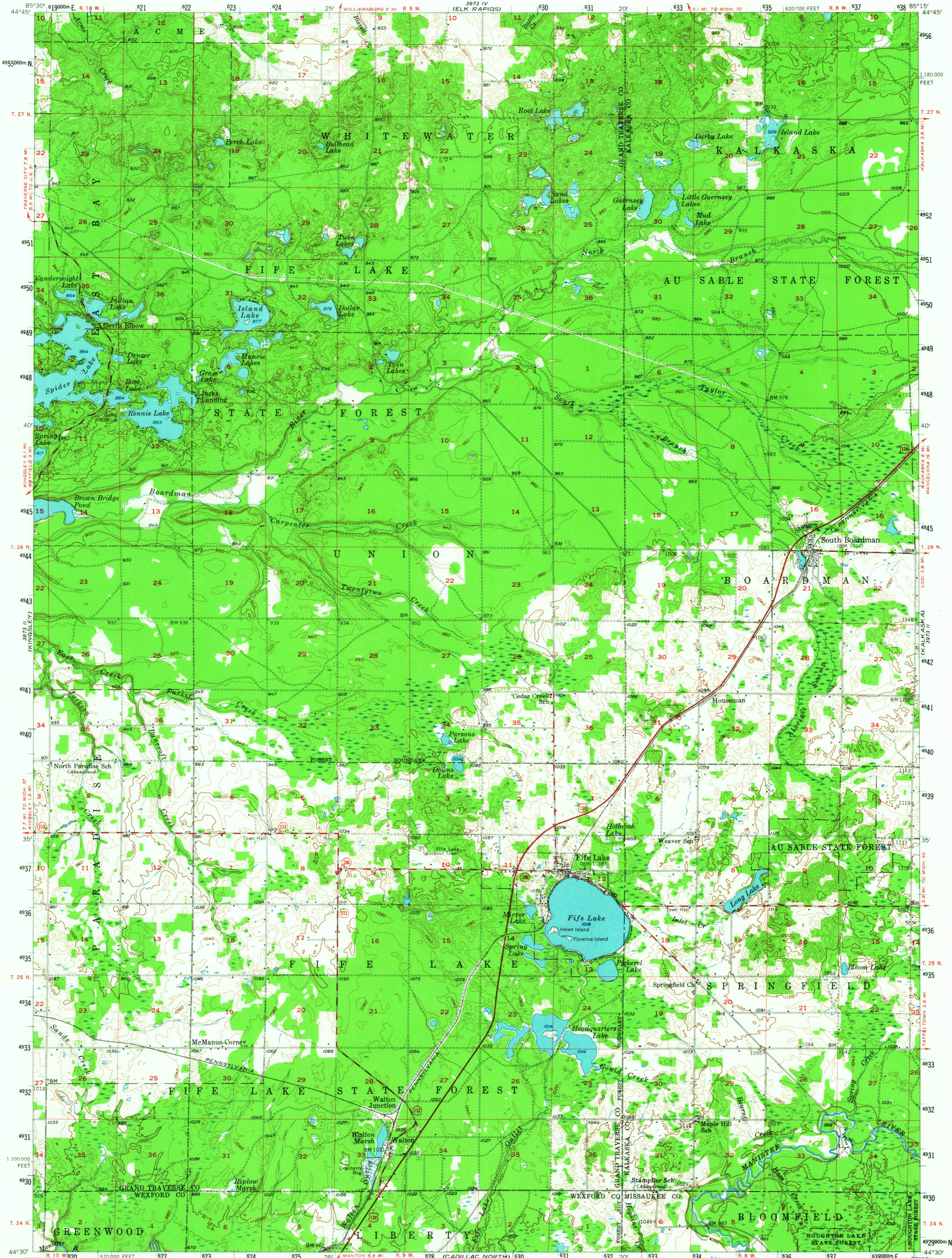
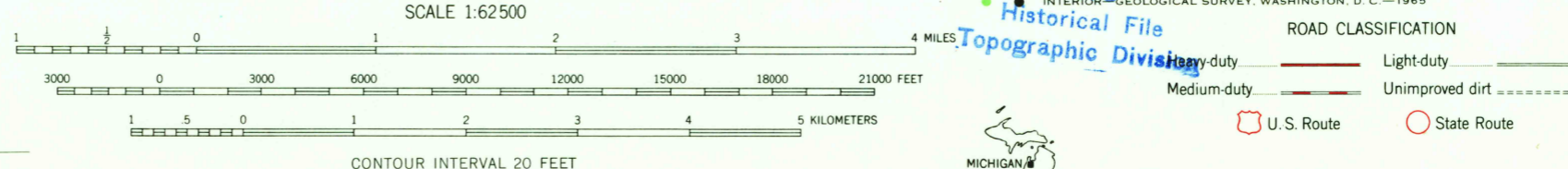


UNITED STATES
DEPARTMENT OF THE INTERIOR
GEOLOGICAL SURVEY

FIFE LAKE QUADRANGLE
MICHIGAN
15 MINUTE SERIES (TOPOGRAPHIC)



Mapped, edited, and published by the Geological Survey
Control by USGS and USC&GS
Topography from aerial photographs by Kelsch plotter
and by planimeter surveys 1955-1956. Aerial photographs taken 1954
Polyconic projection. 1927 North American datum
10,000-foot grid based on Michigan coordinate system, central zone
1000-meter Universal Transverse Mercator grid ticks,
zone 16, shown in blue



SCALE 1:62,500
CONTOUR INTERVAL 20 FEET
DATUM IS MEAN SEA LEVEL

USGS
Historical File
Topographic Division
ROAD CLASSIFICATION
Light-duty
Medium-duty
Unimproved dirt
U.S. Route
State Route

U.S.G.S. FIFE LAKE, MICH.
N4430-W8515/15
1956
AMS 3973 III-SERIES V762
TOPOGRAPHIC DIVISION

DEC 22 1965
2645