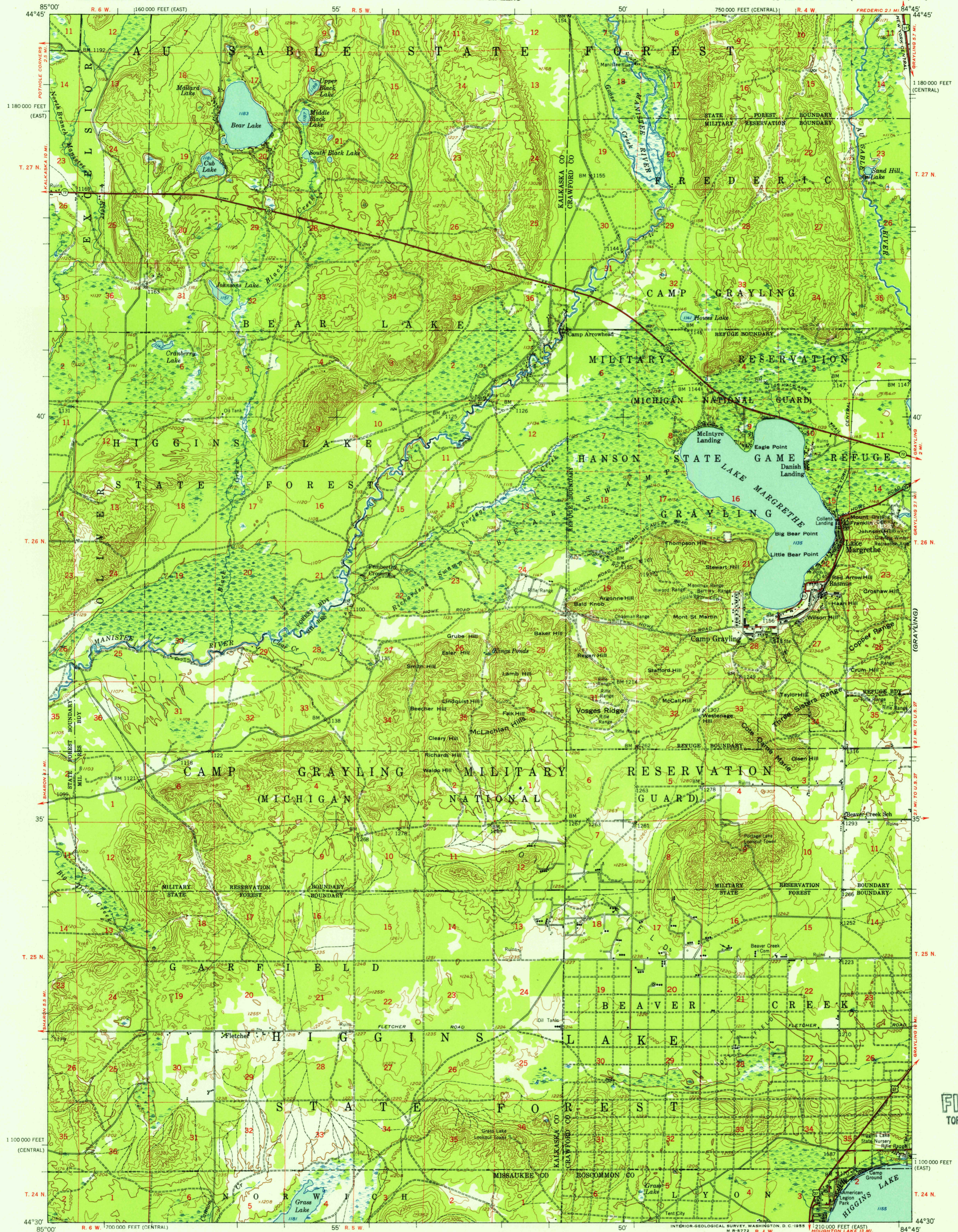
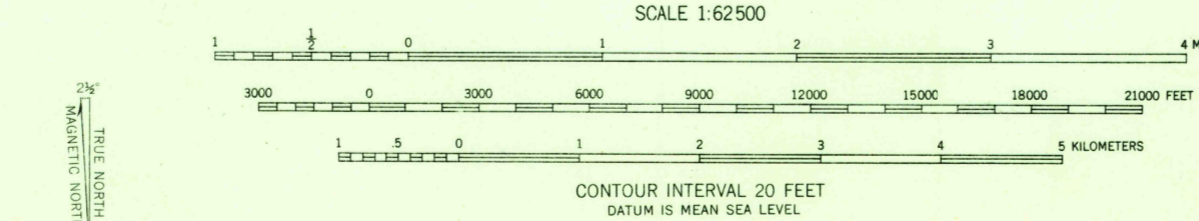


OTSEGO LAKE



Mapped by the Army Map Service
Published for civil use by the Geological Survey
Control by USGS, USC&GS, and USCE
Topography from aerial photographs by multiplex metf.ods
Aerial photographs taken 1949. Field check 1949
Polyconic projection. 1927 North American datum
10,000-foot grids based on Michigan coordinate system,
central and east zones
No distinction is made between dwellings, barns,
commercial and industrial buildings
Dashed land lines indicate approximate locations
Unchecked elevations are shown in brown
Locations of all boundaries are approximate



ROAD CLASSIFICATION
Heavy-duty 4 LANE 16 LANE Light-duty
Medium-duty 4 LANE 16 LANE Unimproved dirt
U.S. Route State Route
This area is also covered by 1:24,000 scale maps
of Lake Margrethe, Black Creek, Fletcher, and
Cote Dame Marie 7.5 minute quadrangles

THIS MAP COMPLIES WITH NATIONAL MAP ACCURACY STANDARDS
FOR SALE BY U.S. GEOLOGICAL SURVEY, WASHINGTON 25, D. C.
A FOLDER DESCRIBING TOPOGRAPHIC MAPS AND SYMBOLS IS AVAILABLE ON REQUEST

USGS
Historical File
Topographic Division

FLETCHER, MICH.
N4430-W8445/15
1949

U.S.G.S.
FILE COPY
TOPOGRAPHIC DIVISION

MAR 22 1955

3195