

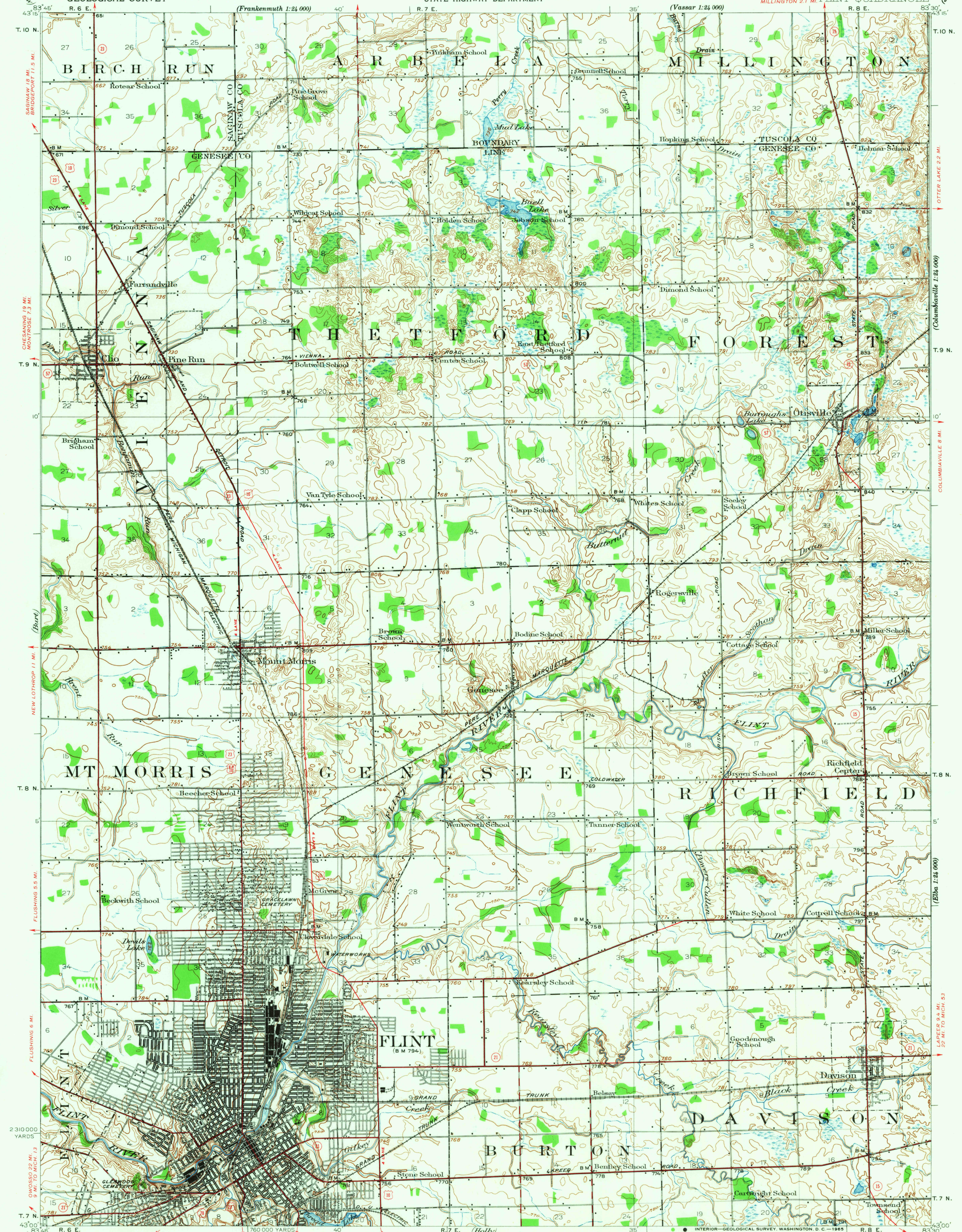
11 MI. TO MICH. 46
FRANKENMUTH 5.9 MI.

UNITED STATES
DEPARTMENT OF THE INTERIOR
GEOLOGICAL SURVEY

STATE OF MICHIGAN
REPRESENTED BY THE
STATE HIGHWAY DEPARTMENT

MICHIGAN
FLINT QUADRANGLE

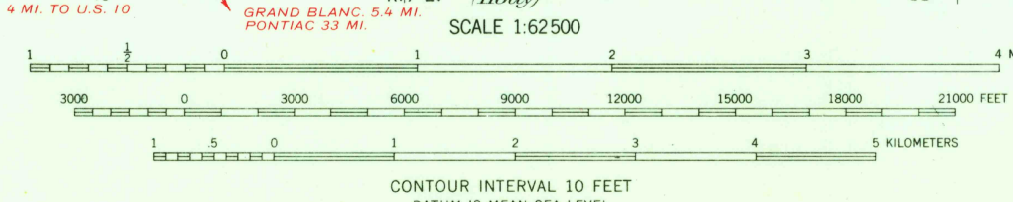
(Annotate 1:24,000)



C.H. Birdseye, Chief Topographic Engineer.
W.H. Hemm, Topographic Engineer in charge.
Topography by C.L. Sadler, C.W. Stump, Jr.,
G.R. Richardson, and T.R. Moffitt.
Control by Geo. T. Hawkins, E.E. Harris, and R.B. Steele.
Surveyed in 1919-1920.

ROAD CLASSIFICATION
Heavy-duty ——— **LANE LANE** Light-duty ———
Medium-duty ——— **LANE LANE** Unimproved dirt ———
U. S. Route State Route

APPROXIMATE MEAN
DECLINATION, 1920



FOR SALE BY U. S. GEOLOGICAL SURVEY, WASHINGTON, D. C. 20242
A FOLDER DESCRIBING TOPOGRAPHIC MAPS AND SYMBOLS IS AVAILABLE ON REQUEST

USGS
Historical File
Topographic Division

U.S.G.S.
FILE COPY
TOPOGRAPHIC DIVISION

FLINT, MICH.
1920
N4300-W8330/15

OCT 4 1965
1725