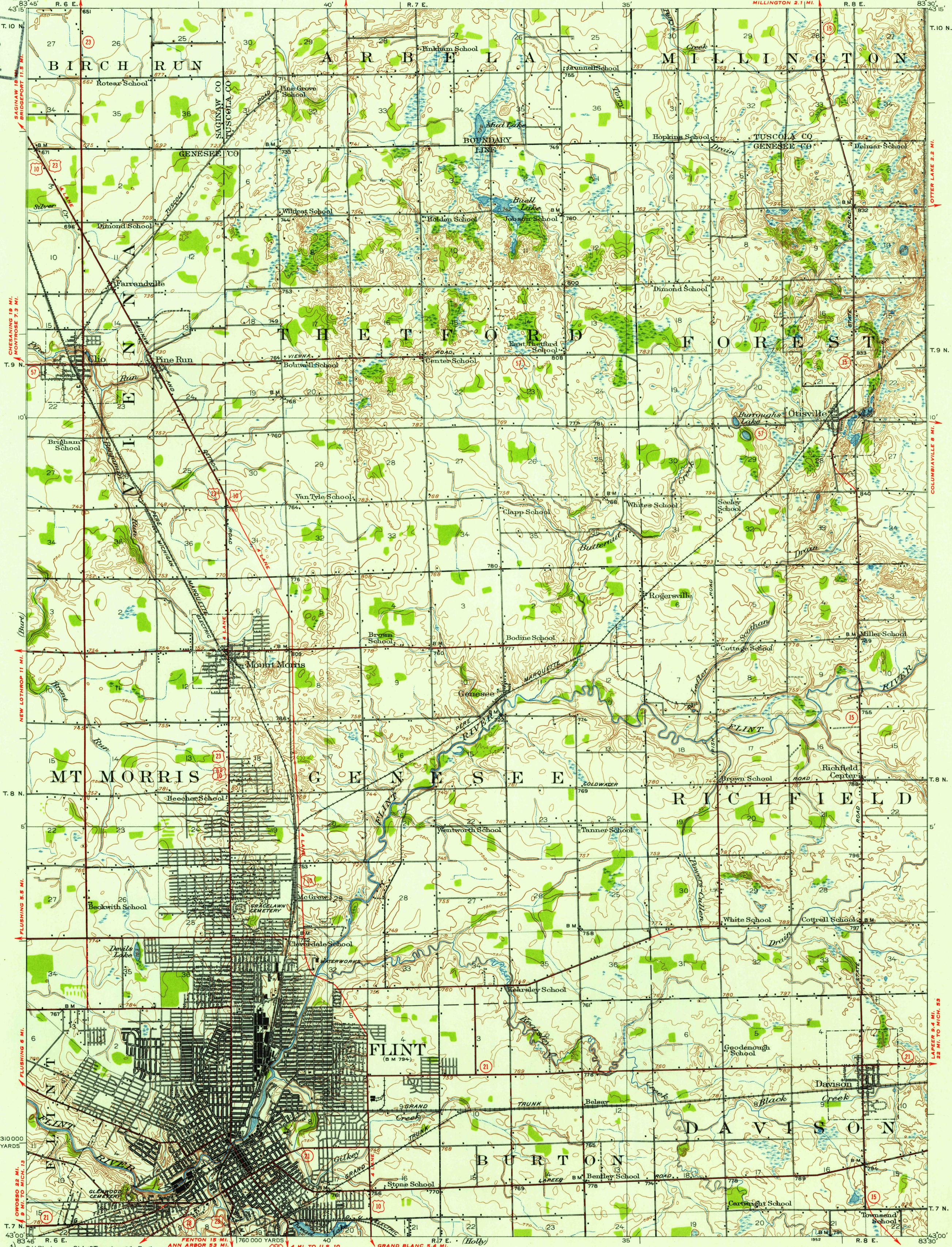
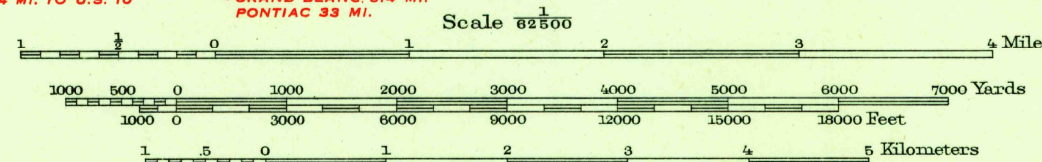


U.S.G.S.  
FILE COPY  
Inspection and Editing.



C.H. Birdseye, Chief Topographic Engineer.  
W.H. Herron, Topographic Engineer in charge.  
Topography by C.L. Sadler, C.W. Stump, Jr.,  
G.R. Richardson, and T.R. Maffitt. SWARTZ 9.5 MI.  
LANESING 4.3 MI.  
Control by Geo. T. Hawkins, E.E. Harris, and R.B. Steele.  
Surveyed in 1919-1920.

**ROAD CLASSIFICATION**  
Heavy-duty ———+ LANE 16 LANE Light-duty ———  
Medium-duty ———+ LANE 10 LANE Unimproved dirt ———  
U.S. Route      State Route



Contour interval 10 feet  
Datum is mean sea level

FOR SALE BY U.S. GEOLOGICAL SURVEY, WASHINGTON 25, D. C.  
A FOLDER DESCRIBING TOPOGRAPHIC MAPS AND SYMBOLS IS AVAILABLE ON REQUEST

USGS  
Historical File  
Topographic Division

U.S.G.S.  
FILE COPY  
Inspection and Editing.

FLINT MICH.  
1920  
N4-300-W8330/15