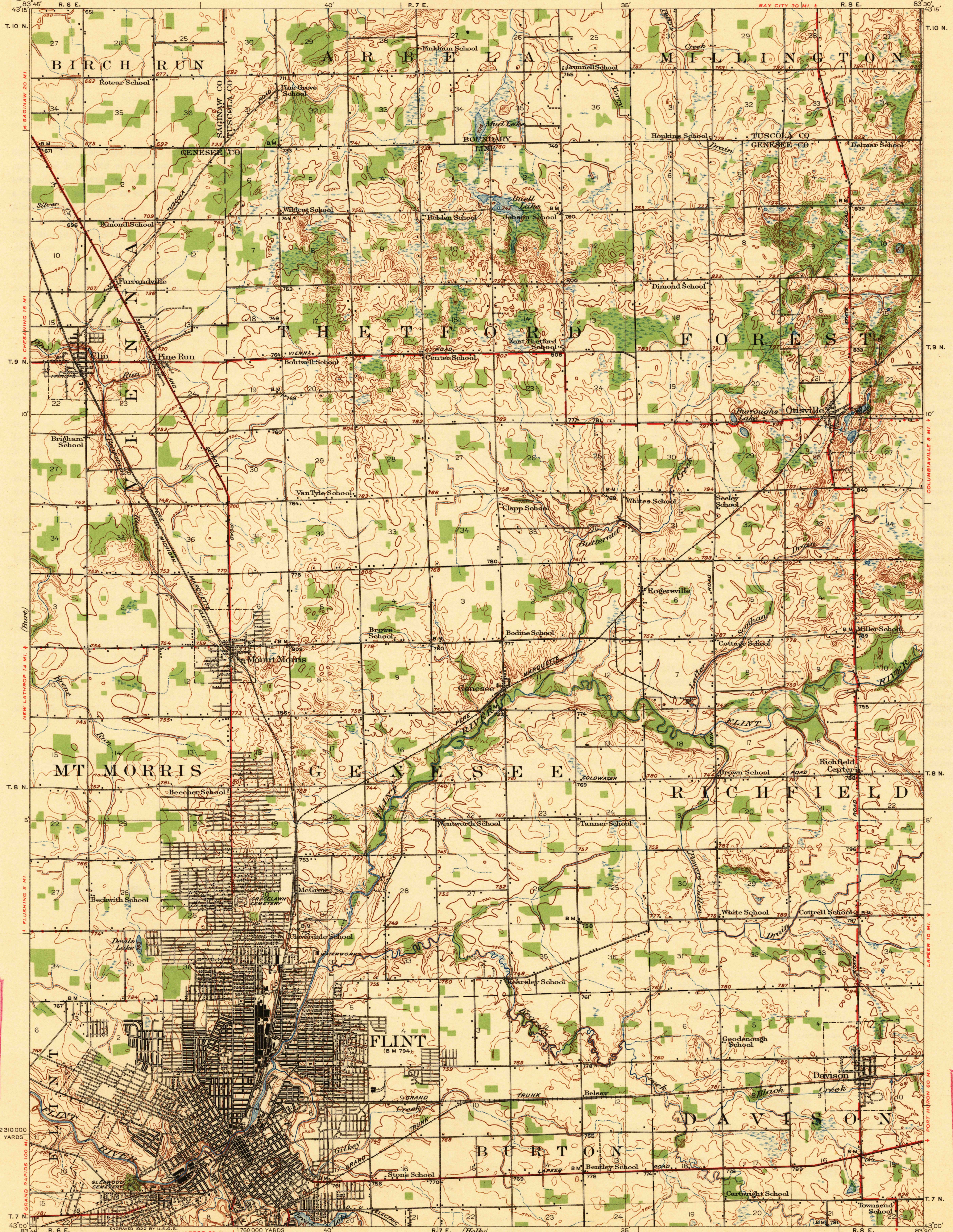


Lewis files

DEPARTMENT OF THE INTERIOR  
ALBERT B. FALL, SECRETARY  
U. S. GEOLOGICAL SURVEY  
GEORGE OTIS SMITH, DIRECTOR

TOPOGRAPHY  
STATE OF MICHIGAN  
BOARD OF GEOLOGICAL SURVEY  
R. SMITH, STATE GEOLOGIST

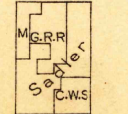
MICHIGAN  
FLINT QUADRANGLE



U. S. G. S.  
FILE COPY  
Inspection and Editing

U. S. G. S.  
FILE COPY  
Inspection and Editing

C. H. Birdseye, Chief Topographic Engineer.  
W. H. Herron, Topographic Engineer in charge.  
Topography by C. L. Sadler, C. W. Stump, Jr.,  
G. R. Richardson, and T. R. Maffitt.  
Control by Geo. T. Hawkins, E. E. Harris, and R. B. Steele.  
Surveyed in 1919-1920.



Scale 62500  
1 2 3 4 Miles  
1 2 3 4 Kilometers

Contour interval 10 feet.  
Datum is mean sea level.

USGS  
Historical File  
Topographic Division

Polyconic projection, North American datum.  
5000 yard grid based upon U.S. zone system, B.  
THROUGH ROUTES (STANDARD)  
THROUGH ROUTES (NOT STANDARD)  
SECONDARY ROUTES

NOV 13 1922 3120

FLINT  
Edition of 1922.