

U. S. G. S.
FILE COPY

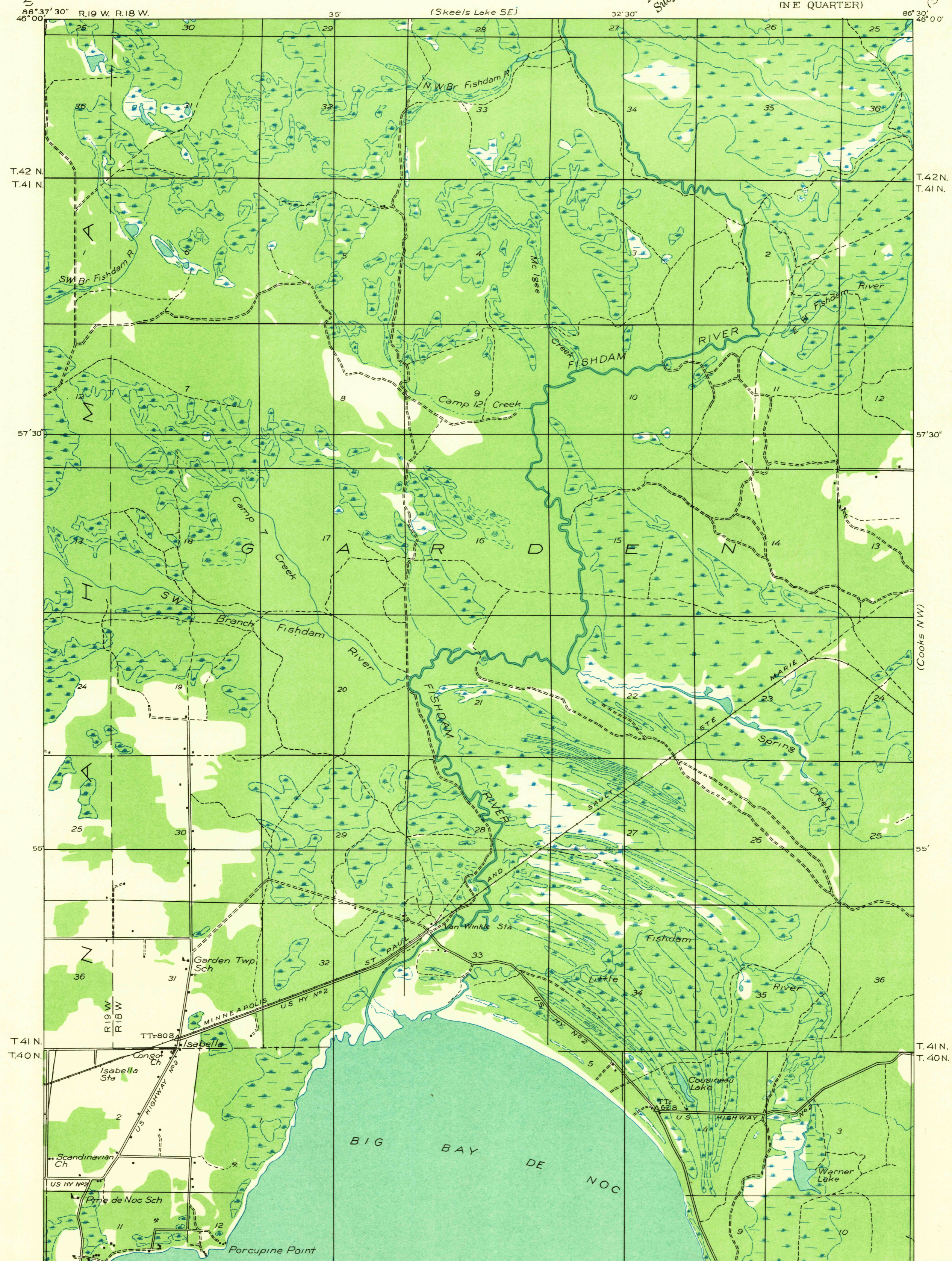
Inspection and Editing.

DEPARTMENT OF THE INTERIOR
U. S. GEOLOGICAL SURVEY

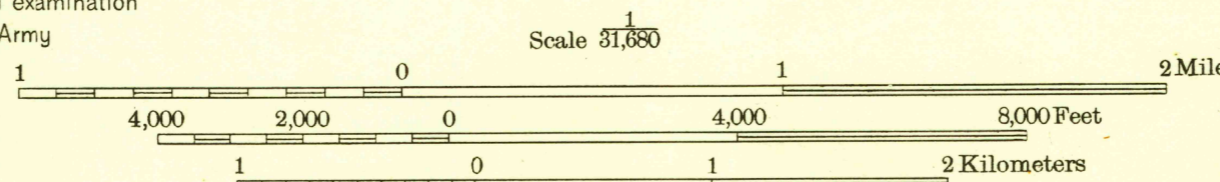
STATE OF MICHIGAN
DEPARTMENT OF CONSERVATION
GEO. R. HOGARTH, DIRECTOR
GEOLOGICAL SURVEY DIVISION, R. A. SMITH, STATE GEOLOGIST

MICHIGAN
(DELTA COUNTY)
GARDEN QUADRANGLE
(NE QUARTER)

Advance sheet.
Subject to correction.



Glenn S. Smith, Division Engineer
Compiled by U. S. Geological Survey after field examination
of aerial photographs taken by Air Corps, U. S. Army
Control by U. S. Geological Survey
Field examination in 1932



USGS
Historical File
Topographic Division
TRUE NORTH
MAGNETIC NORTH
APPROXIMATE MEAN
DECLINATION, 1982

GARDEN, MICH.
(NE)