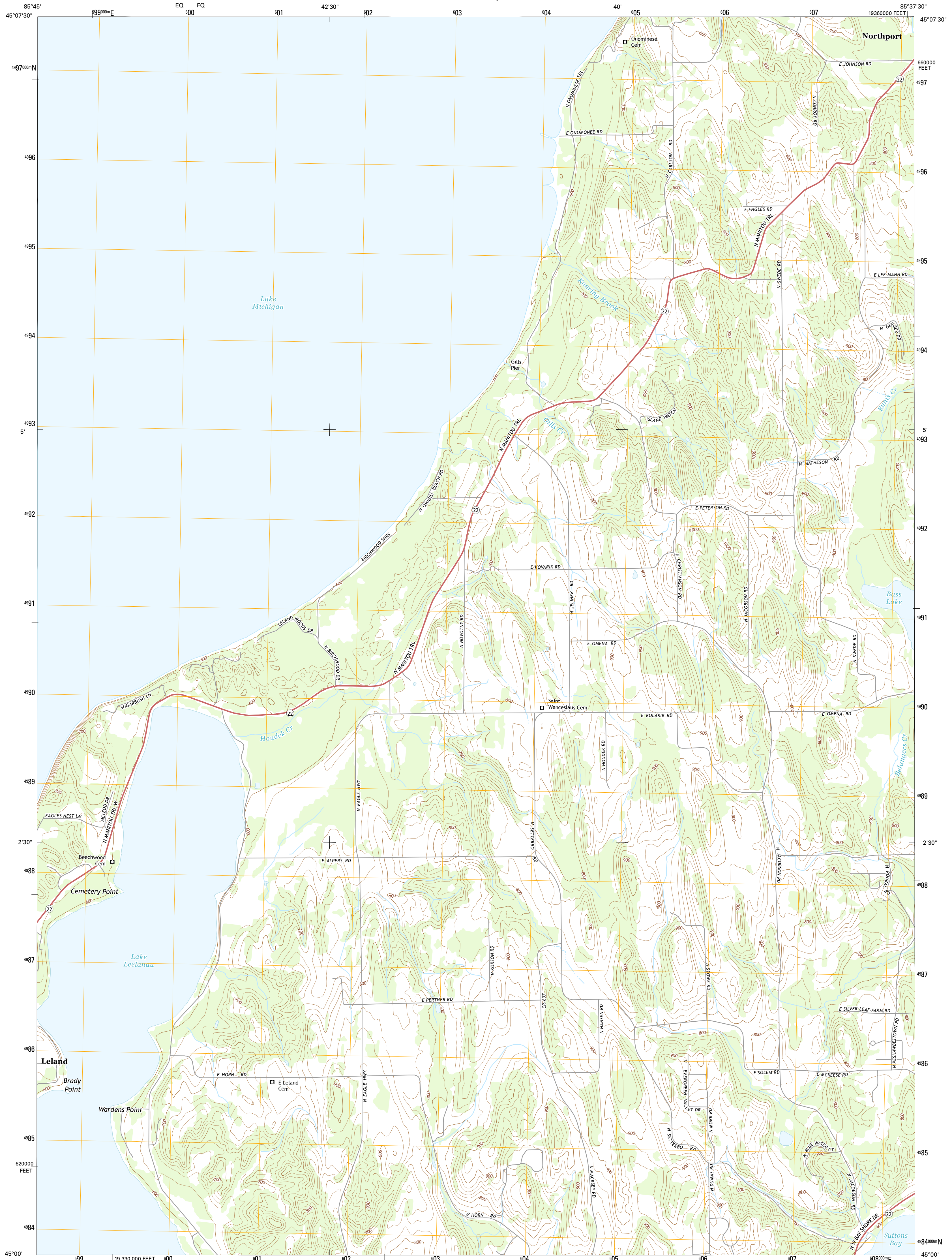




U.S. DEPARTMENT OF THE INTERIOR
U.S. GEOLOGICAL SURVEY



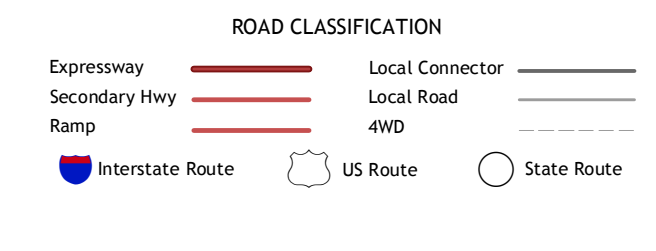
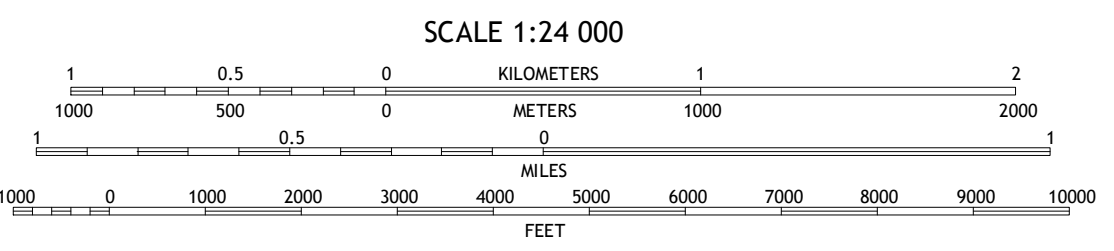
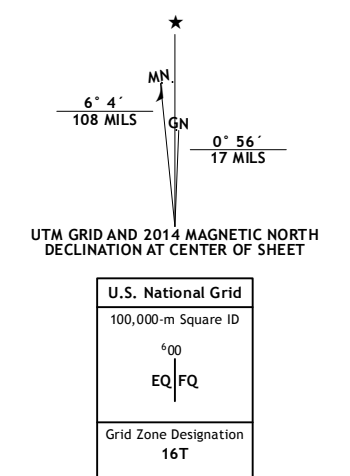
GILLS PIER QUADRANGLE
MICHIGAN-LEELANAU CO.
7.5-MINUTE SERIES



Produced by the United States Geological Survey
North American Datum of 1983 (NAD83)
World Geodetic System of 1984 (WGS84). Projection and
1 000-meter grid: Universal Transverse Mercator, Zone 16T
10 000-foot ticks: Michigan Coordinate System of 1983 (central
zone)

This map is not a legal document. Boundaries may be
generalized for this map scale. Private lands within government
reservations may not be shown. Obtain permission before
entering private lands.

Imagery.....NAIP, July 2012
Roads.....HERE, ©2013
Names.....GNIS, 2013
Hydrography.....National Hydrography Dataset, 2012
Contours.....National Elevation Dataset, 1999
Boundaries.....Multiple sources; see metadata file 1972 - 2013
Public Land Survey System.....BLM, 2011



1	2	3	1 Northport NW
2	3	4	2 Northport
3	4	5	3 Northport
4	5	6	4 Leland
5	6	7	5 Omema
6	7	8	6 Good Harbor Bay
7	8		7 Suttons Bay
8			8 Napleton

ADJOINING QUADRANGLES

GILLS PIER, MI
2014



USGS
7500
16T
EQ FQ
100000
1930
16T
USGS X 24 K 17 S
NGA REF NO.