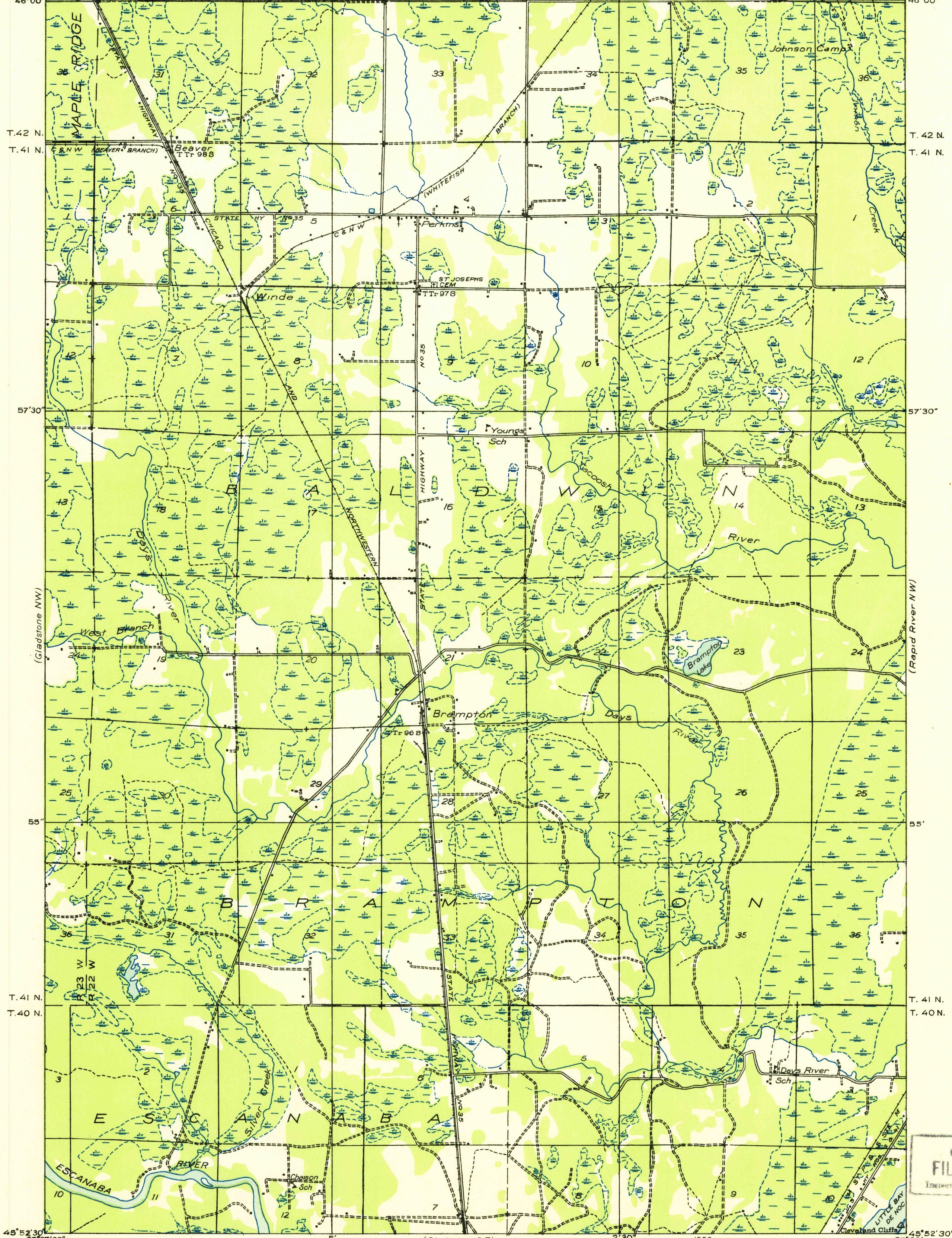


R. 23 W. R. 22 W. 5' 2'30" 87°00'46"00'

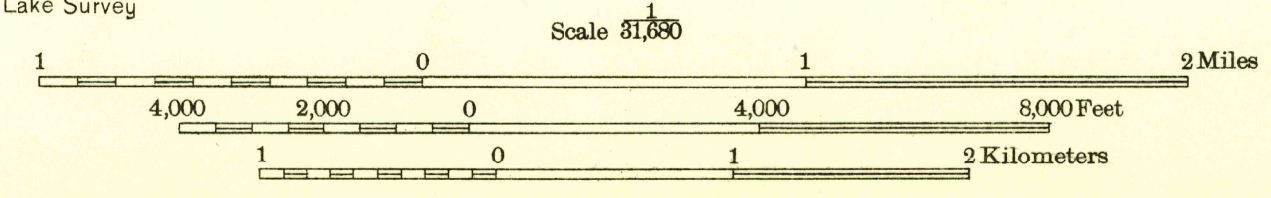
U. S. G. S.
FILE COPY
Inspection and Editing.

Advance sheet
Subject to correction

(Trenary SW)



Glenn S. Smith, Division Engineer
Compiled by U. S. Geological Survey after field examination
of aerial photographs taken by Air Corps, U. S. Army
Control by U. S. Geological Survey and U. S. Lake Survey
Field examination in 1932



Polyconic projection. North American datum.
USGS
Historical File
Topographic Division
APPROXIMATE MEAN
DECLINATION, 1932
GLADSTONE, MICH.
(NE)
N 4552.5-W 8700.75

FOR SALE BY U. S. GEOLOGICAL SURVEY, WASHINGTON 25, D. C.
A FOLDER DESCRIBING TOPOGRAPHIC MAPS AND SYMBOLS IS AVAILABLE ON REQUEST

U. S. G. S.
FILE COPY
Inspection and Editing.