

(Rock SW)

DEPARTMENT OF THE INTERIOR
U. S. GEOLOGICAL SURVEY

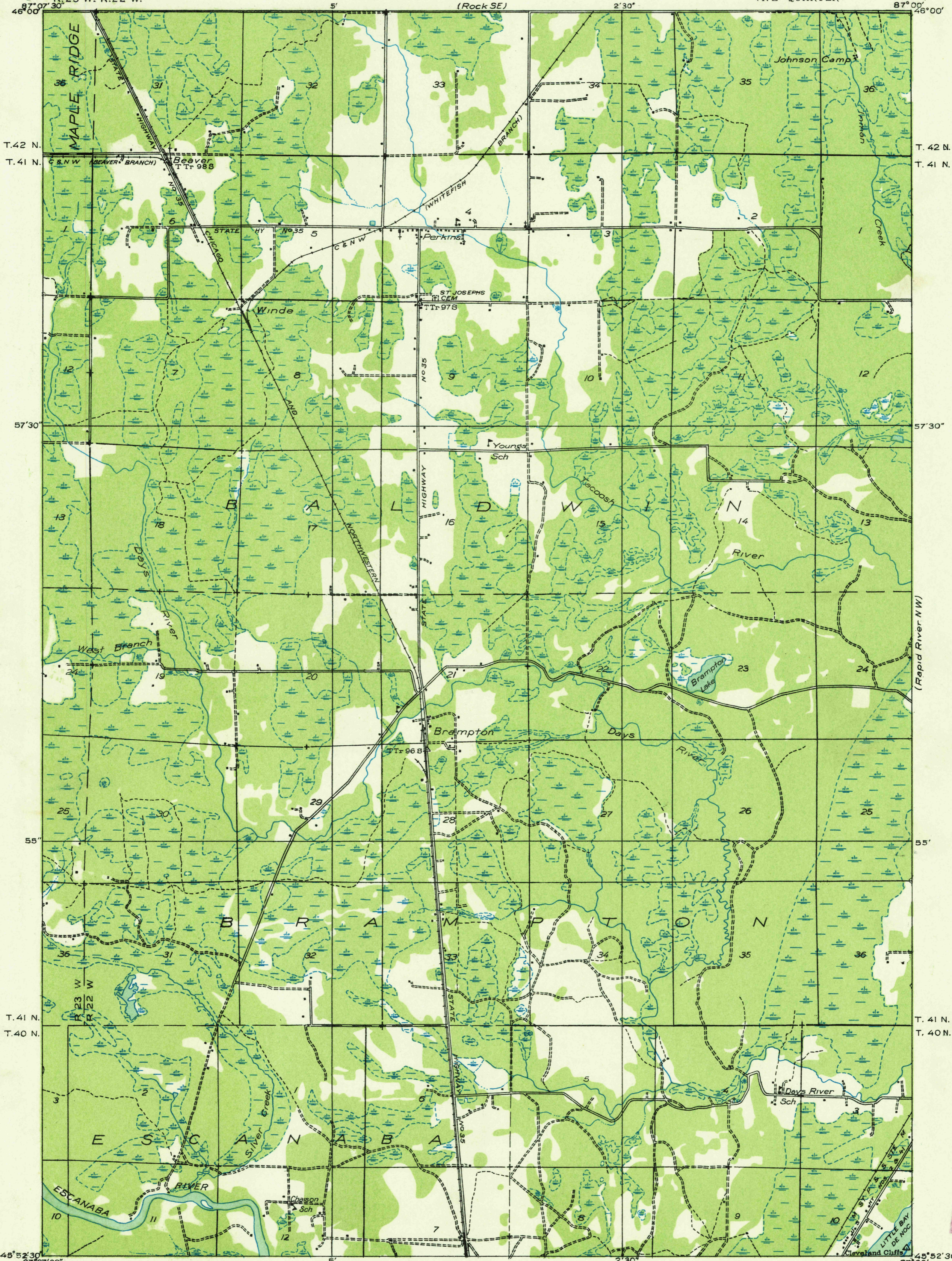
R. 23 W. R. 22 W.

STATE OF MICHIGAN
DEPARTMENT OF CONSERVATION
GEO. R. HOGARTH, DIRECTOR
GEOLOGICAL SURVEY DIVISION, R. A. SMITH, STATE GEOLOGIST

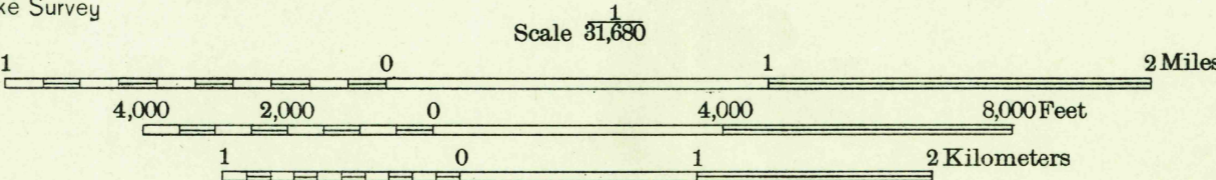
Advance sheet
Subject to correction

MICHIGAN
(DELTA COUNTY)
GLADSTONE QUADRANGLE
(NE QUARTER)

U. S. G. S.
FILE COPY
Inspection and Editing



Glenn S. Smith, Division Engineer
Compiled by U. S. Geological Survey after field examination
of aerial photographs taken by Air Corps, U. S. Army
Control by U. S. Geological Survey and U. S. Lake Survey
Field examination in 1932



Polyconic projection. North American datum.
USGS
Historical File
Topographic Division
TRUE NORTH
MAGNETIC NORTH
APPROXIMATE MEAN DECLINATION, 1932
GLADSTONE, MICH.
(NE)

U. S. G. S.
FILE COPY
Inspection and Editing

JUN 22 1935