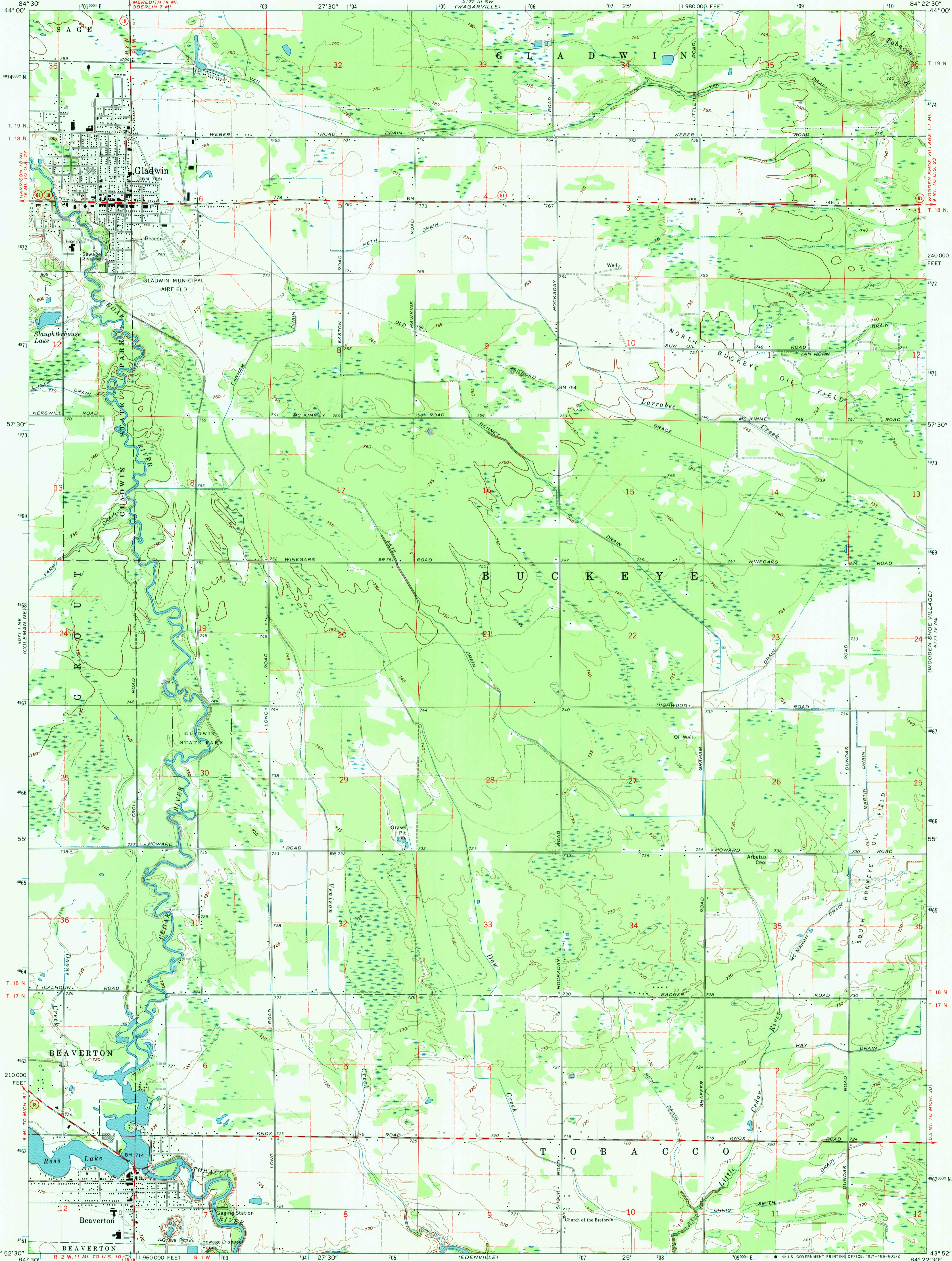
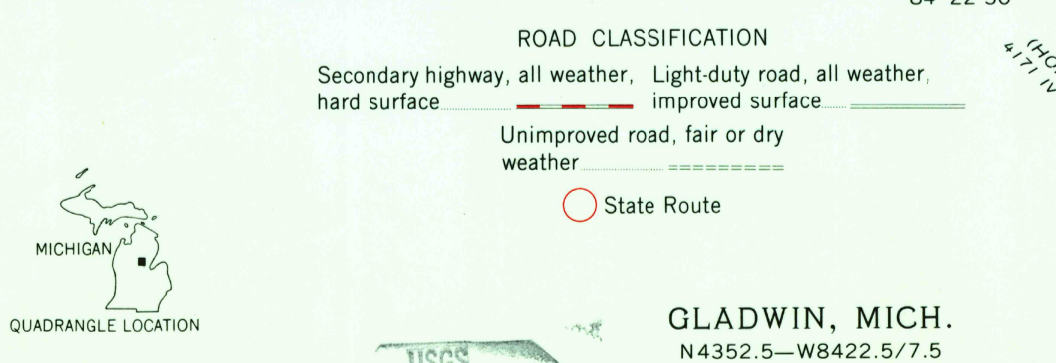
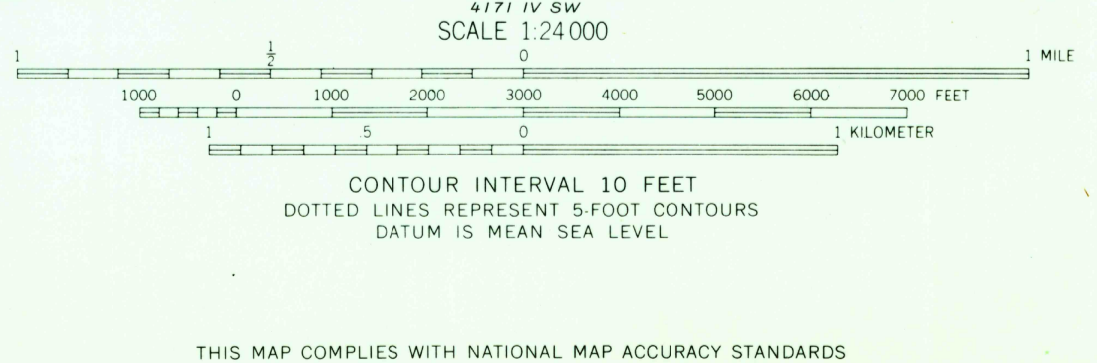
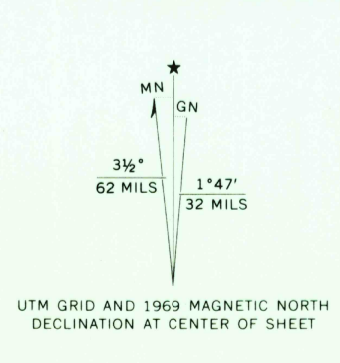


402 1/2 MI.  
(SAGLE)

17 1/2 MI.  
(SECOND LAKE)



Maped, edited, and published by the Geological Survey  
in cooperation with State of Michigan agencies  
Control by USGS and USC&GS  
Topography by photogrammetric methods from aerial  
photographs taken 1968. Field checked 1969  
Polyconic projection. 1927 North American datum  
10,000-foot grid based on Michigan coordinate system, central zone  
1000-meter Universal Transverse Mercator grid ticks,  
zone 16, shown in blue  
Fine red dashed lines indicate selected fence and field lines where  
generally visible on aerial photographs. This information is unchecked



THIS MAP COMPLIES WITH NATIONAL MAP ACCURACY STANDARDS  
FOR SALE BY U.S. GEOLOGICAL SURVEY, WASHINGTON, D. C. 20242  
A FOLDER DESCRIBING TOPOGRAPHIC MAPS AND SYMBOLS IS AVAILABLE ON REQUEST

USGS  
HISTORICAL FILE  
TOPOGRAPHIC DIVISION  
GLADWIN, MICH.  
N4352.5-W8422.5/7.5  
1969  
AMS 4171 IV NW-SERIES W862

WNH  
2000  
JAN 12 1972