

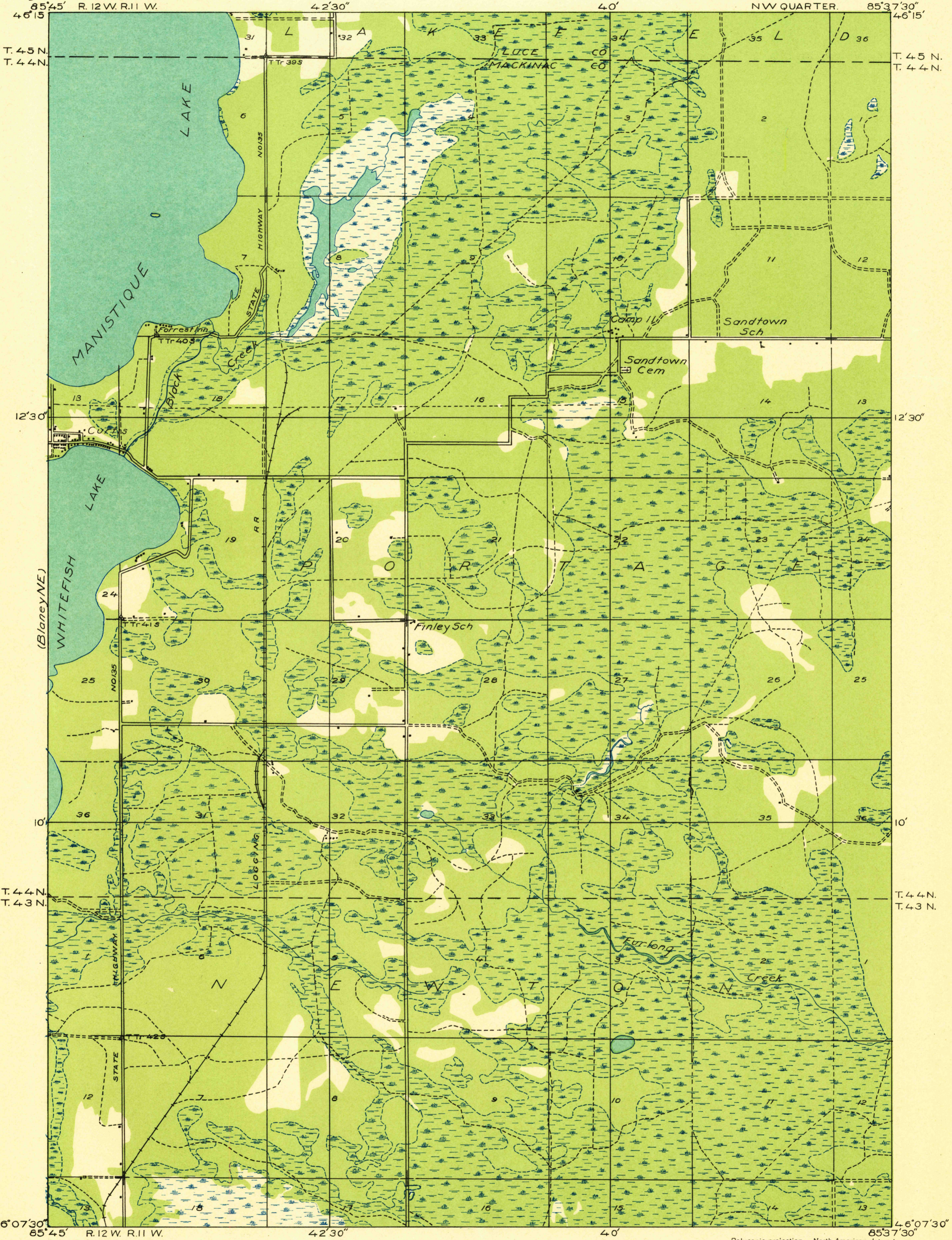
(SeneySE)

Advance sheet
Subject to correction

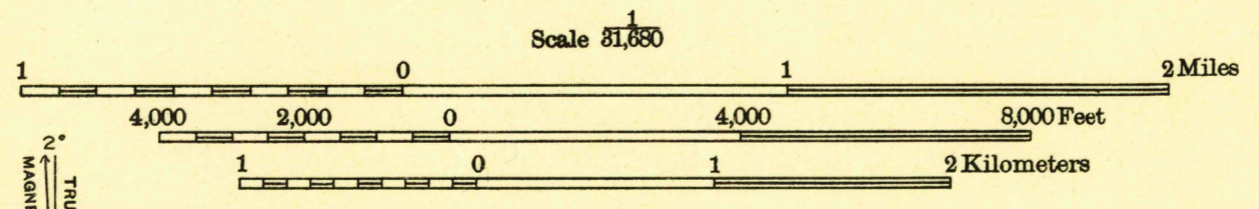
DEPARTMENT OF THE INTERIOR
U. S. GEOLOGICAL SURVEY

STATE OF MICHIGAN
DEPARTMENT OF CONSERVATION
GEO. R. HOGARTH, DIRECTOR
GEOLOGICAL SURVEY DIVISION, R. A. SMITH, STATE GEOLOGIST

MICHIGAN
GOULD CITY QUADRANGLE



Glenn S. Smith, Division Engineer
Compiled in part from aerial photographs
taken by Air Corps, U. S. Army
Control by U. S. Geological Survey
Surveyed in 1931



TRUE NORTH
MAGNETIC NORTH
APPROXIMATE MEAN
DECLINATION, 1931

RETURN TO:
NMD HISTORICAL MAP ARCHIVES
USGS NATIONAL CENTER, MS-522
RESTON, VA 22092

Board on Geographic Names
Class 630-USGS-Mich. Qua
Sheet No. Gould City-N.W.
Date JUN 30 1949 1931

GOULD CITY, MICH
NW