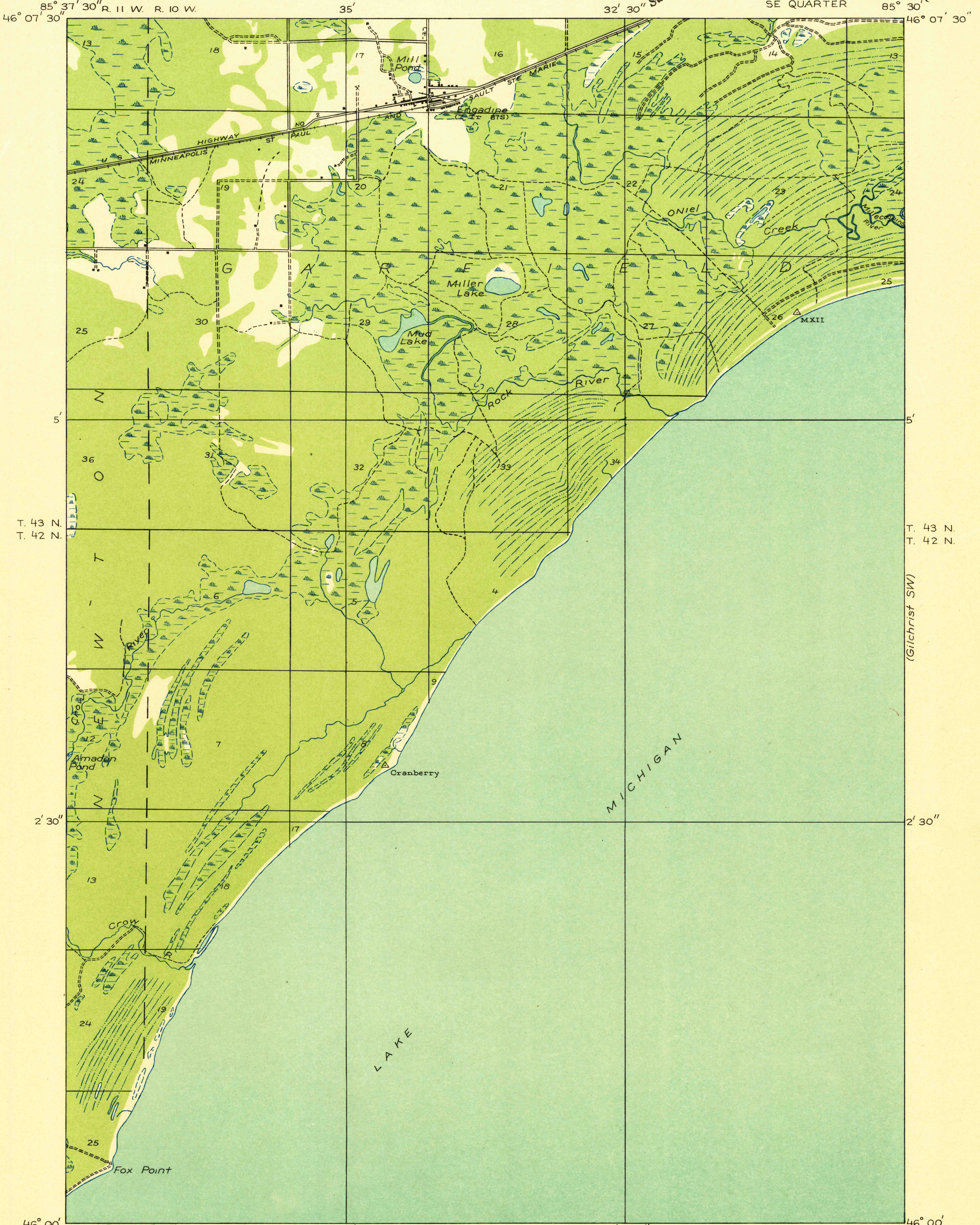


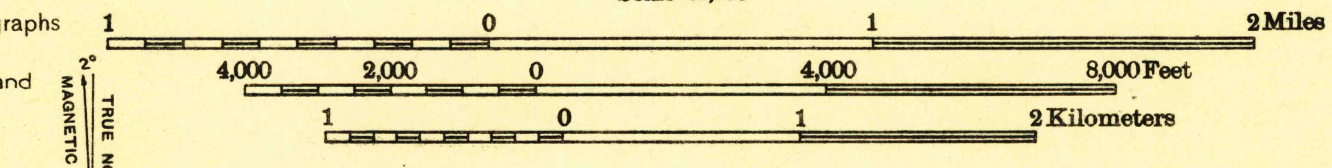
Advance sheet.
Subject to correction.

(Gilchrist NW)



46° 00' 85° 37' 30" R. 11 W. R. 10 W.

Glenn S. Smith, Division Engineer
Compiled in part from aerial photographs
taken by Air Corps, U. S. Army
Control by U. S. Geological Survey and
U. S. Lake Survey
Surveyed in 1931



Polyconic projection. North American datum

TRUE NORTH
MAGNETIC NORTH
APPROXIMATE MEAN
DECLINATION, 1931

GOULD CITY, MICH
SE

ward on Geographic Names

RETURN TO:
NMD HISTORICAL MAP ARCHIVES
USGS NATIONAL CENTER, MS-522
RESTON, VA 22092

Class 630-USGS-Mich. Quad
Sheet No. Gould City, SE
Date JUN 30 1931