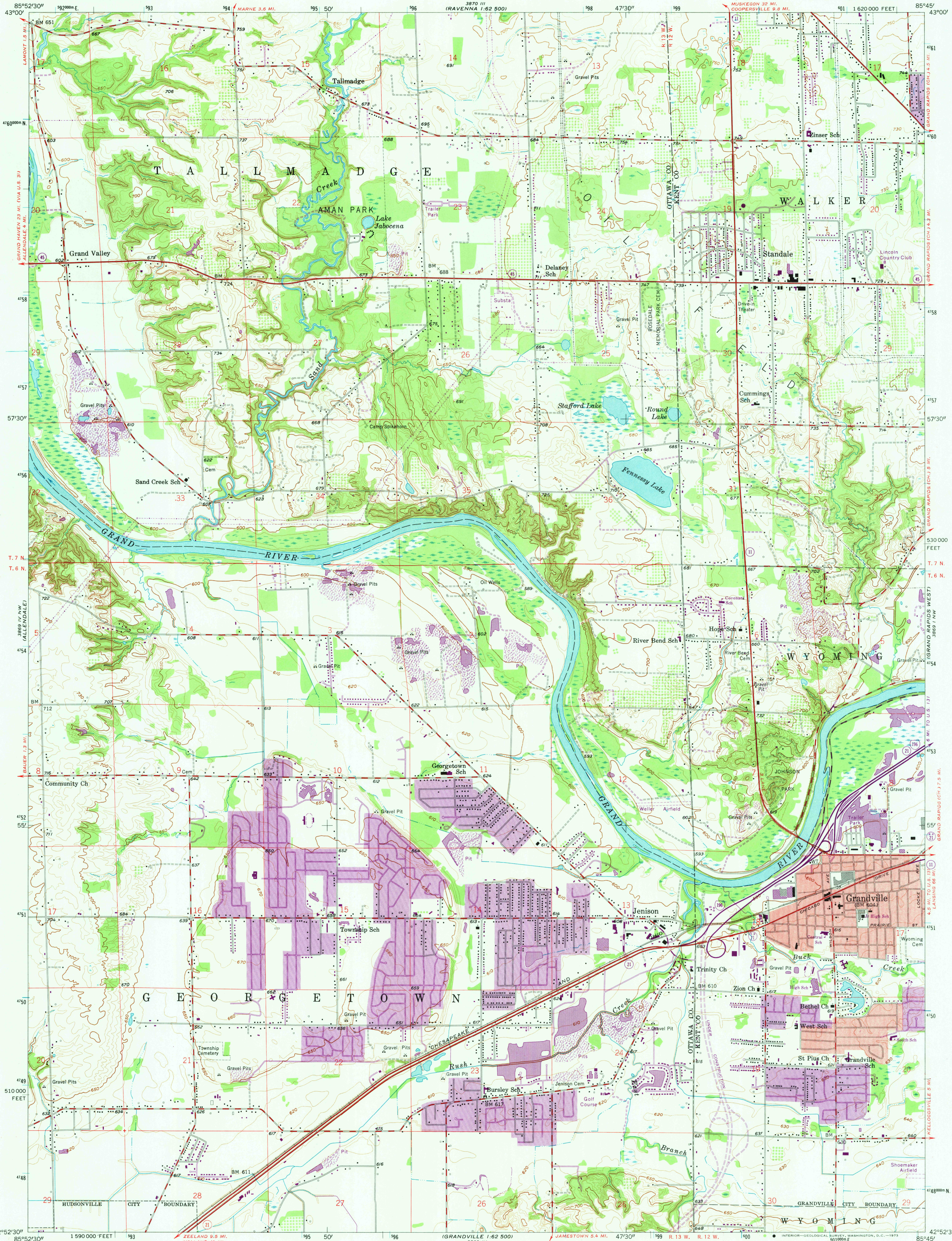


UNITED STATES
DEPARTMENT OF THE INTERIOR
GEOLOGICAL SURVEY

GRANDVILLE QUADRANGLE
MICHIGAN
7.5 MINUTE SERIES (TOPOGRAPHIC)
NE/4 GRANDVILLE 15' QUADRANGLE



Mapped, edited, and published by the Geological Survey

Control by USGS and USC&GS

Topography from aerial photographs by photogrammetric methods

Aerial photographs taken 1957. Field check 1958

Polyconic projection. 1927 North American datum

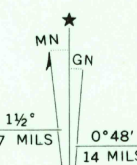
10,000-foot grid based on Michigan coordinate system, south zone

1000-meter Universal Transverse Mercator grid ticks, zone 16, shown in blue

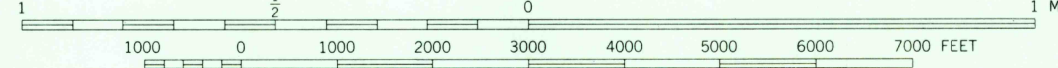
Red tint indicates areas in which only landmark buildings are shown

Revisions shown in purple compiled from aerial photographs taken 1972. This information not field checked

Purple tint indicates extension of urban areas



UTM GRID AND 1972 MAGNETIC NORTH DECLINATION AT CENTER OF SHEET



CONTOUR INTERVAL 10 FEET
DATUM IS MEAN SEA LEVEL

THIS MAP COMPLIES WITH NATIONAL MAP ACCURACY STANDARDS
FOR SALE BY U.S. GEOLOGICAL SURVEY, WASHINGTON, D. C. 20242
A FOLDER DESCRIBING TOPOGRAPHIC MAPS AND SYMBOLS IS AVAILABLE ON REQUEST

ROAD CLASSIFICATION

Heavy-duty	Light-duty
Medium-duty	Unimproved dirt
U.S. Route	State Route
Interstate Route	



GRANDVILLE, MICH.
USGS Historical File NE/4 GRANDVILLE 15' QUADRANGLE 4252.5 - W8545/7.5
Topographic Division

1958
PHOTOREVISED 1972
AMS 3889 IV NE-SERIES V862

2245

MAY 23 1973