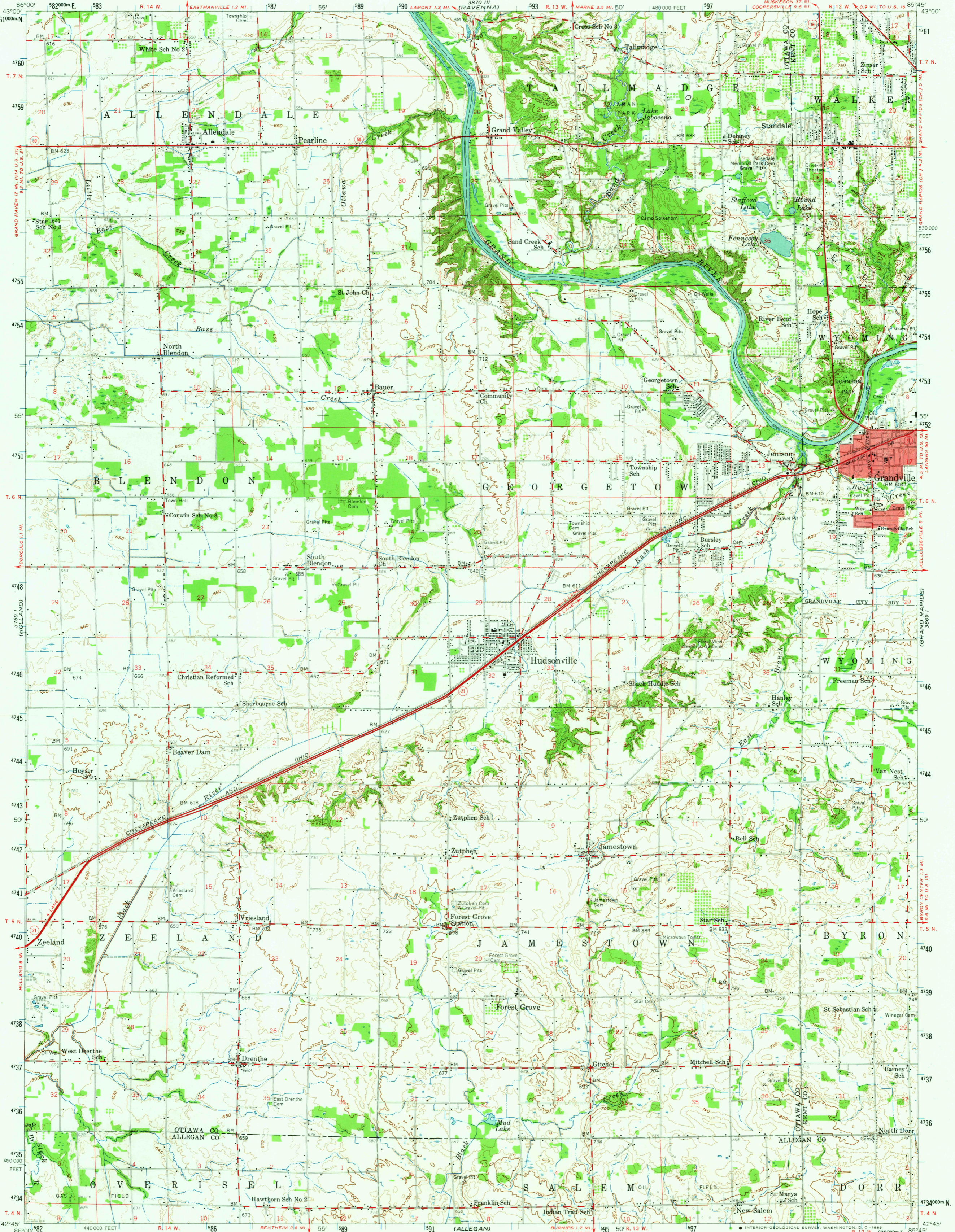
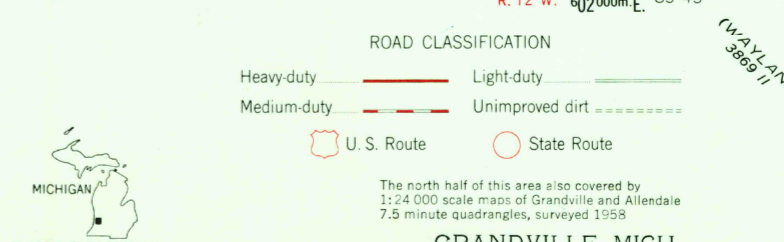
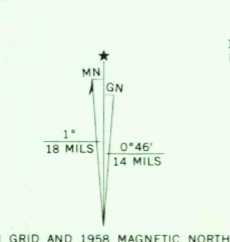


UNITED STATES  
DEPARTMENT OF THE INTERIOR  
GEOLOGICAL SURVEY

GRANDVILLE QUADRANGLE  
MICHIGAN  
15 MINUTE SERIES (TOPOGRAPHIC)



Mapped, edited, and published by the Geological Survey  
Control by USGS and USC&GS  
Topography from aerial photographs by photogrammetric methods  
Aerial photographs taken 1957. Field check 1958  
Polyconic projection. 1927 North American datum  
10,000-foot grid based on Michigan coordinate system, central zone  
1000-meter Universal Transverse Mercator grid ticks,  
zone 16, shown in blue  
Red tint indicates areas in which only  
landmark buildings are shown



THIS MAP COMPLIES WITH NATIONAL MAP ACCURACY STANDARDS  
FOR SALE BY U. S. GEOLOGICAL SURVEY, WASHINGTON, D. C. 20242  
A FOLDER DESCRIBING TOPOGRAPHIC MAPS AND SYMBOLS IS AVAILABLE ON REQUEST

GRANDVILLE, MICH.  
N 4245-W 8545/15

1958  
AMS 3869 IV-SERIES V762