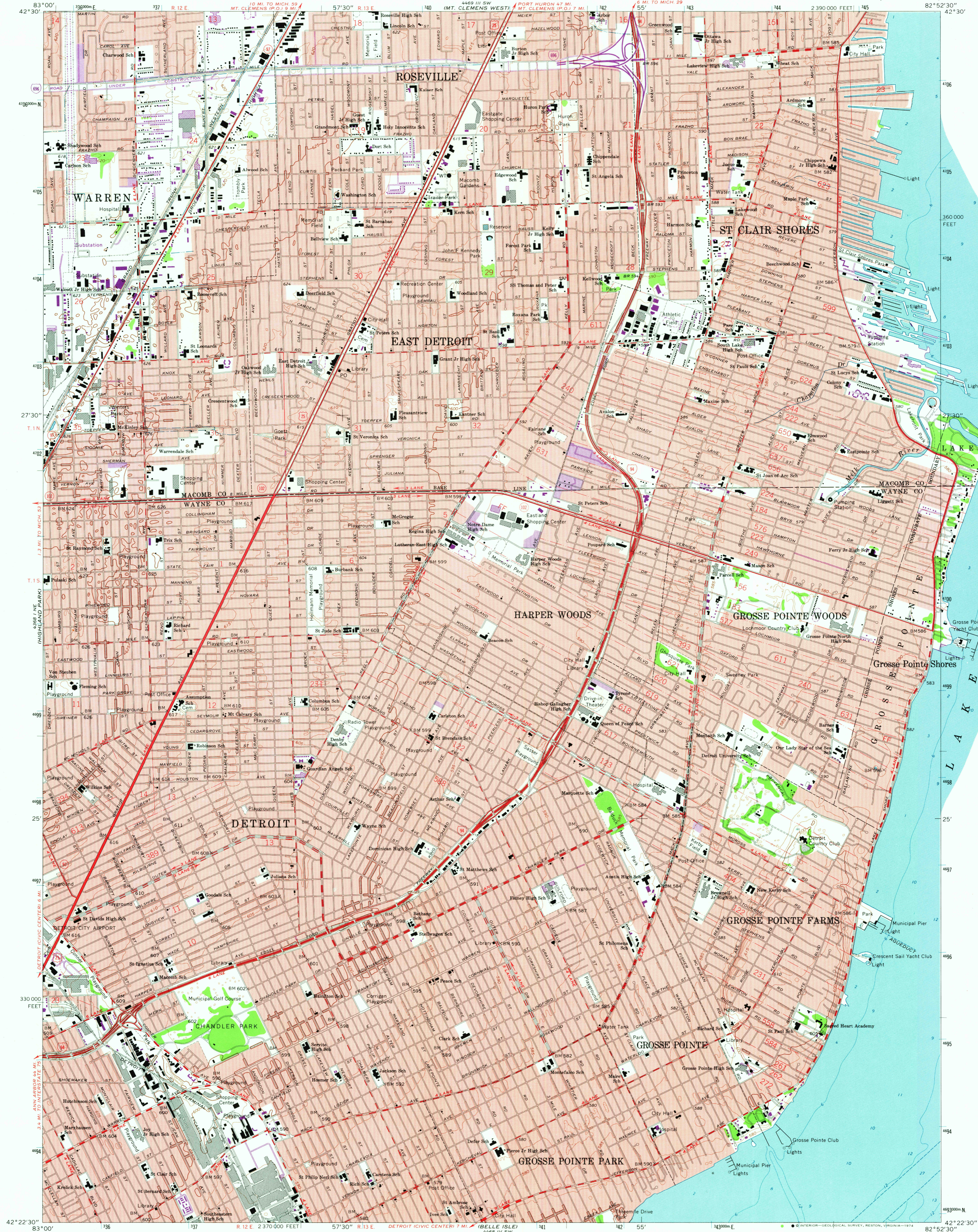
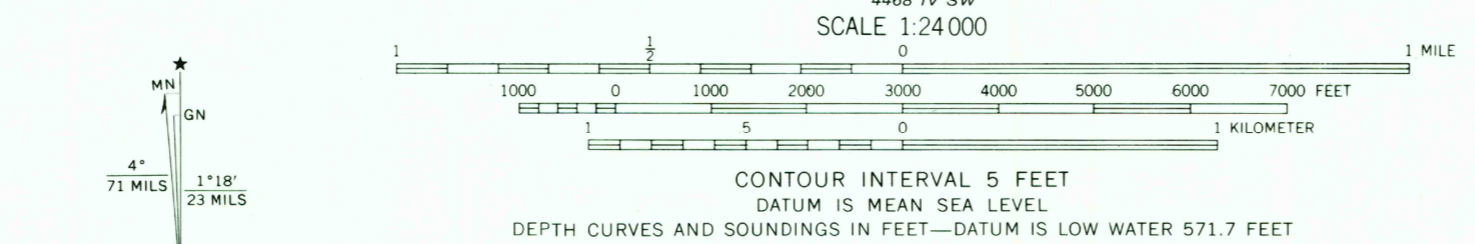


UNITED STATES
DEPARTMENT OF THE INTERIOR
GEOLOGICAL SURVEY

GROSSE POINTE QUADRANGLE
MICHIGAN
7.5 MINUTE SERIES (TOPOGRAPHIC)



Maped, edited, and published by the Geological Survey in cooperation with State of Michigan agencies
Control by USGS, USC&GS, U. S. Lake Survey, and City of Detroit
Planimetry by photogrammetric methods from aerial photographs
Topography by plane-table surveys 1938-39. Revised from aerial photographs taken 1967. Field checked 1968
Selected hydrographic data compiled from U. S. Lake Survey Chart 42 (1969). This information is not intended for navigational purposes
Polyconic projection. 1927 North American datum
10,000-foot grid based on Michigan coordinate system, south zone
1000-meter Universal Transverse Mercator grid ticks, zone 17, shown in blue
Red tint indicates areas in which only landmark buildings are shown



ROAD CLASSIFICATION
Primary highway, all weather, hard surface
Secondary highway, all weather, hard surface
Light-duty road, all weather, improved surface
Unimproved road, fair or dry weather

USGS
Historical File
Topographic Division
GROSSE POINTE, MICH.
N4222.5—W8252.5/7.5

Revisions shown in purple compiled from aerial photographs taken 1973. This information not field checked
Purple tint indicates extension of urban areas

1968
PHOTOREVISED 1973
AMS 4468 IV NW—SERIES 9662

3700
JAN 24 1975