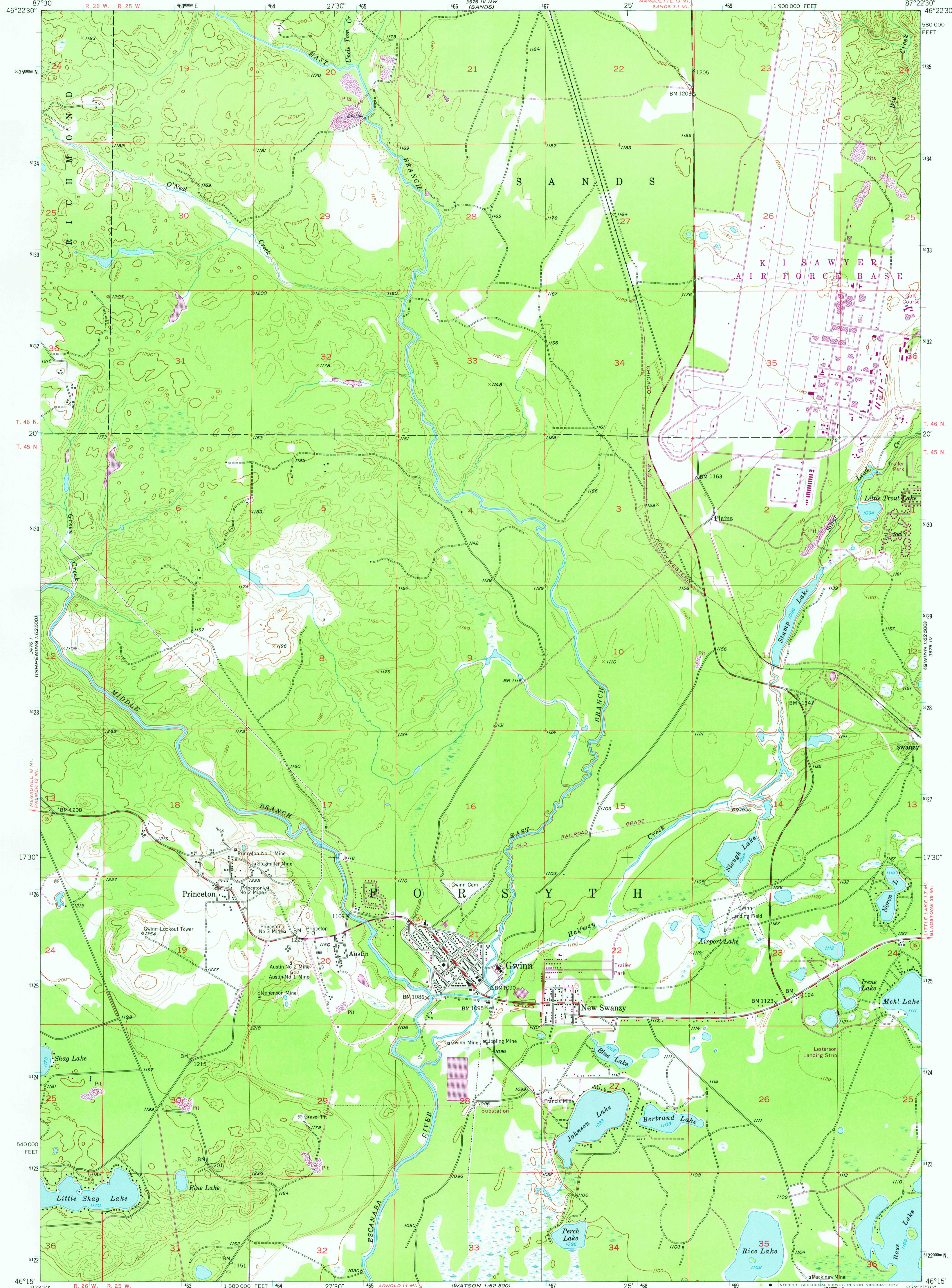


3576 IV NW  
(SANDS)

3576 IV  
(SANDS)



Mapped, edited, and published by the Geological Survey

Control by USGS and USC&GS

Topography from aerial photographs by Kelsch plotter

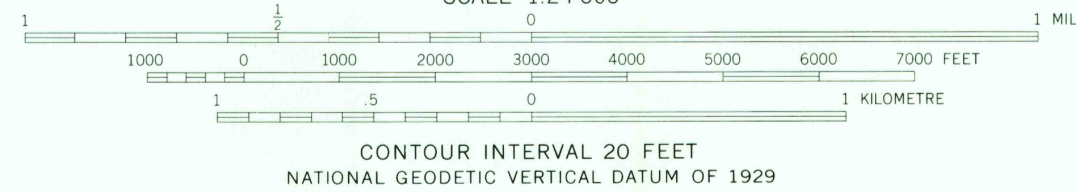
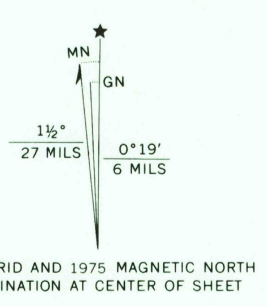
Aerial photographs taken 1951. Field check 1952

Polyconic projection. 1927 North American datum

10,000-foot grid based on Michigan coordinate system, north zone

1000-metre Universal Transverse Mercator grid ticks, zone 16, shown in blue

Revisions shown in purple compiled from aerial photographs taken 1975. This information not field checked



CONTOUR INTERVAL 20 FEET  
NATIONAL GEODETIC VERTICAL DATUM OF 1929

THIS MAP COMPLIES WITH NATIONAL MAP ACCURACY STANDARDS  
FOR SALE BY U. S. GEOLOGICAL SURVEY, RESTON, VIRGINIA 22092  
A FOLDER DESCRIBING TOPOGRAPHIC MAPS AND SYMBOLS IS AVAILABLE ON REQUEST



ROAD CLASSIFICATION

Heavy-duty	4 LANE 6 LANE	Light-duty
Medium-duty	4 LANE 6 LANE	Unimproved dirt
U. S. Route		State Route

USGS  
Historical File  
Topographic Division

GWINN, MICH.  
SW/4 GWINN 15' QUADRANGLE  
N4615-W8722.5/7.5

1952  
PHOTOREVISED 1975  
AMS 3576 IV SW-SERIES V862

MAR 22 1978  
5900