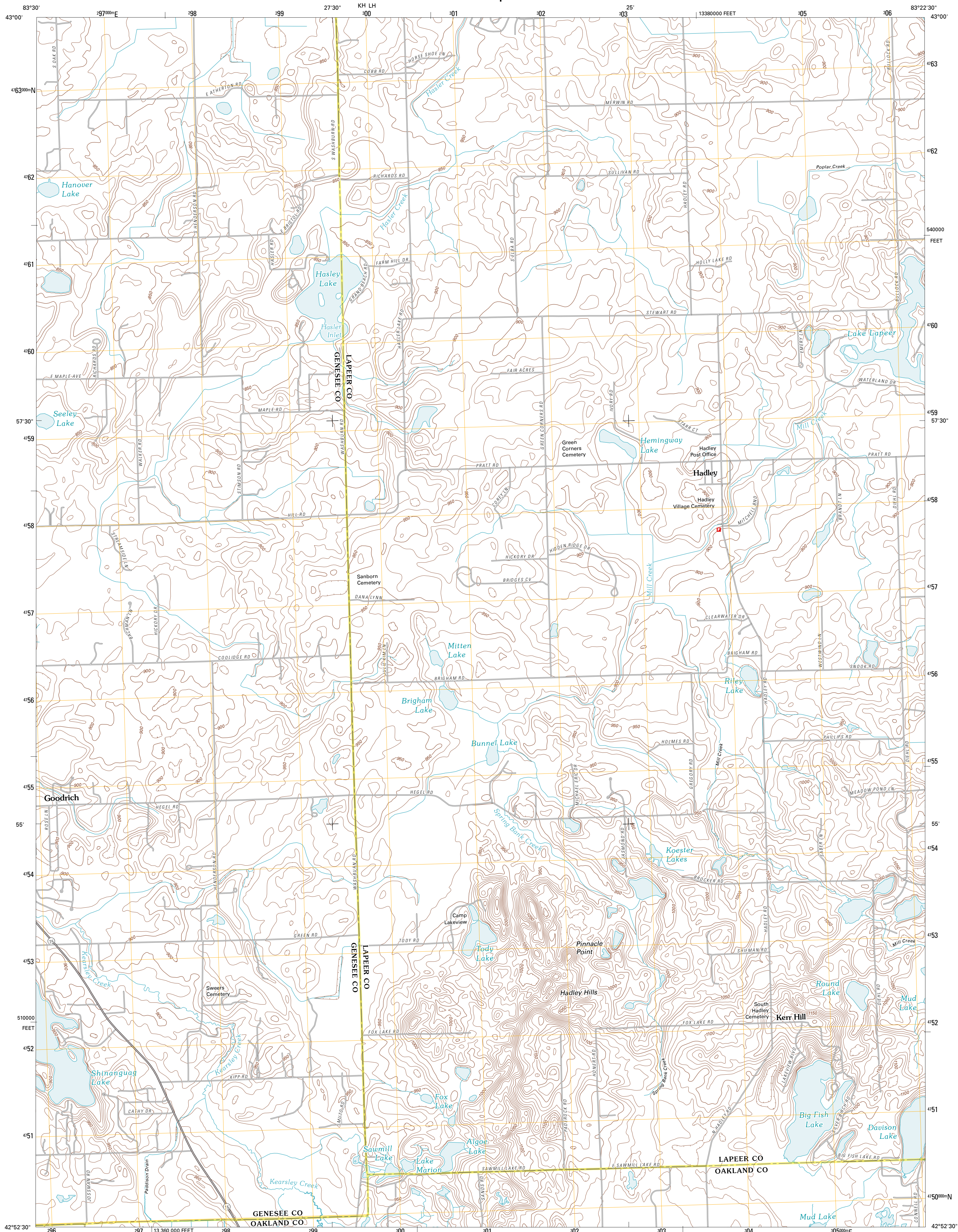




U.S. DEPARTMENT OF THE INTERIOR  
U. S. GEOLOGICAL SURVEY

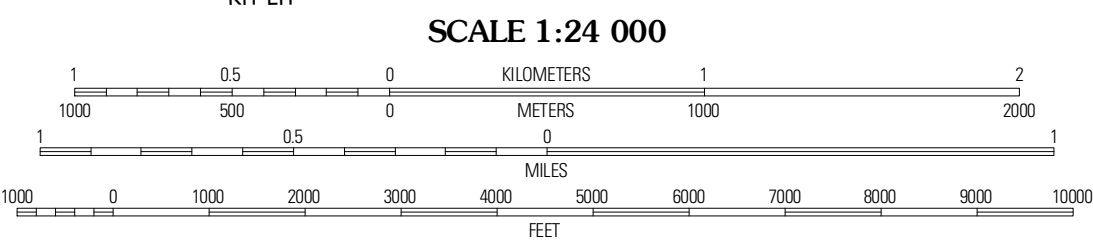
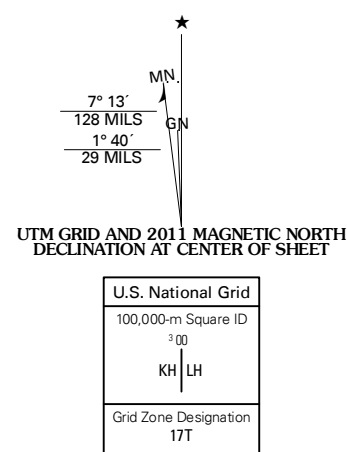


HADLEY QUADRANGLE  
MICHIGAN  
7.5-MINUTE SERIES



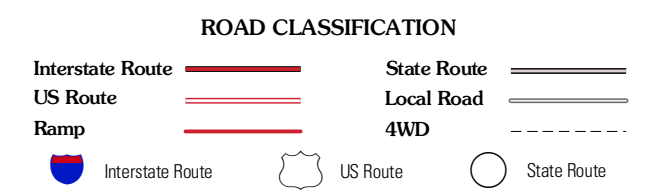
Produced by the United States Geological Survey  
North American Datum of 1983 (NAD83)  
World Geodetic System of 1984 (WGS84). Projection and  
1 000 meter grid: Universal Transverse Mercator, Zone 17T  
10 000-foot ticks: Michigan Coordinate System of 1983  
(south zone)

Imagery.....NAP, September 2009  
Roads.....©2006-2010 Tele Atlas  
Names.....CNS, 2010  
Hydrography.....National Hydrography Dataset, 2009  
Contours.....National Elevation Dataset, 1999  
Boundaries.....Census, IBWC, IBC, USGS, 1972 - 2010



Davison	Elba	Lapeer
Goodrich	Hadley	Metamora
Davidsburg	Ontonville	Oxford

ADJOINING 7.5 QUADRANGLES



CONTOUR INTERVAL 10 FEET  
NORTH AMERICAN VERTICAL DATUM OF 1988

This map was produced to conform with version 0.5.10  
of the USGS US Topo Product Standard.  
A metadata file associated with this product is draft version 0.5.16

HADLEY, MI  
2011