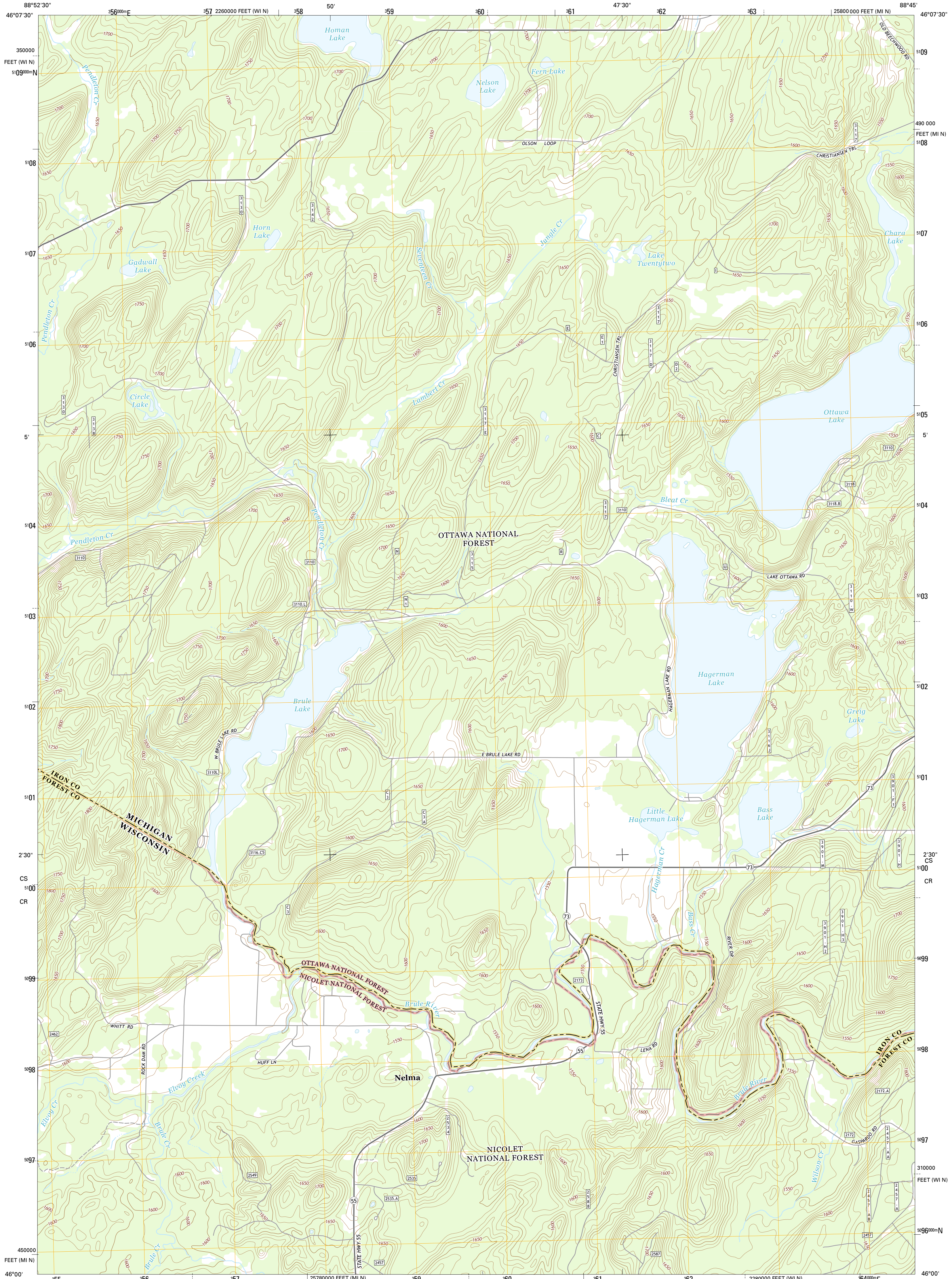




U.S. DEPARTMENT OF THE INTERIOR
U.S. GEOLOGICAL SURVEY



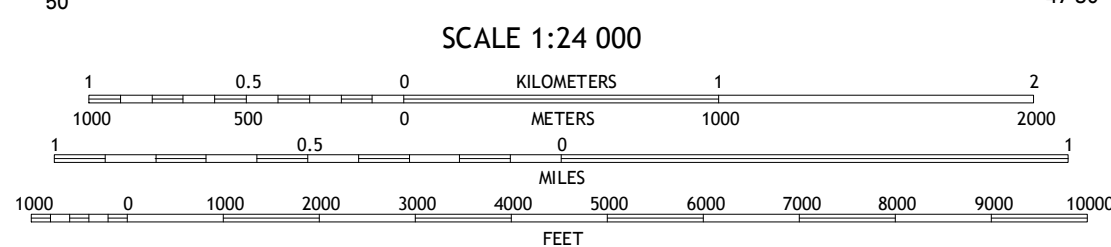
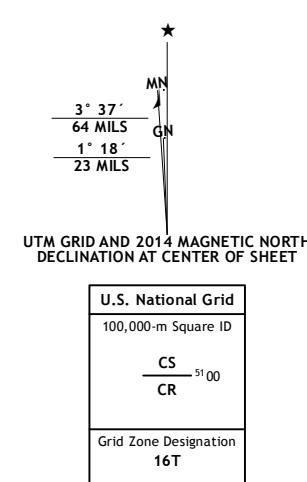
HAGERMAN LAKE QUADRANGLE
MICHIGAN-WISCONSIN
7.5-MINUTE SERIES



Produced by the United States Geological Survey
North American Datum of 1983 (NAD83)
World Geodetic System of 1984 (WGS84), Projection and
1 000-meter grid: Universal Transverse Mercator, Zone 16T
10 000-foot ticks: Michigan Coordinate System of 1983 (north zone), Wisconsin Coordinate System of 1983 (north zone)

This map is not a legal document. Boundaries may be generalized for this map scale. Private lands within government reservations may not be shown. Obtain permission before entering private lands.

Imagery: NAIP, July 2012
Roads: HERE, ©2013
Roads within US Forest Service Lands: FSTopo Data with limited Forest Service updates, 2013
Names: GNS, 2013
Hydrography: National Hydrography Dataset, 2012
Contours: National Elevation Dataset, 2002
Boundaries: Multiple sources; see metadata file 1972_2013
Public Land Survey System: BLM, 2011



QUADRANGLE LOCATION

1	2	3
4	5	6
7	8	

1 Golden Lake
2 Beechwood
3 Gibbs City
4 Smoky Lake
5 Iron River
6 Alvin NW
7 Alvin
8 Tipler

ROAD CLASSIFICATION	
Expressway	Local Connector
Secondary Hwy	Local Road
Ramp	4WD
Interstate Route	US Route
FS Primary Route	FS Passenger Route
	FS High Clearance Route

Check with local Forest Service unit for current travel conditions and restrictions.

HAGERMAN LAKE, MI-WI
2014



USGS REF. NO. USGS 24K16899